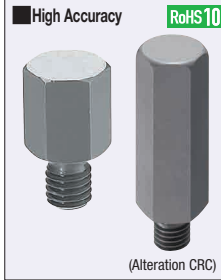


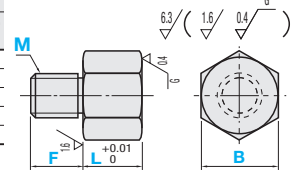
Height Adjusting Pins - Hex Threaded

Features: Locating Pins suitable for height adjustment because High Precision and Medium Accuracy can be selected for the tolerance in the height direction. Threaded and Height Configurable.



Material	Surface Treatment	Hardness	Type		
			B Fixed F Fixed	B Fixed F Configurable	B Selectable F Fixed
SCM435	-	Treated Hardness: 46 ~ 50HRC	JPra	JPRAM	JPRFA
	Black Oxide	Treated Hardness: 46 ~ 50HRC	BJPra	BJPRAM	BJPRFA
	Hard Chrome Plating	Treated Hardness: 46 ~ 50HRC Plating Hardness: 750HV ~	HJPra	HJPRAM	HJPRFA
SUS304	-	-	SJPra	SJPRAM	SJPRFA
SUS40C or 13Cr stainless	-	Treated Hardness: 50 ~ 55HRC	CJPra	CJPRAM	CJPRFA

⚠ SUS304 may not be polished.



* Under-head of "B Fixed and F Configurable Type" is R0.5 or less. Take note of chamfering on the tapped hole.

Part Number	Type	M (Coarse)	* Tightening Torque Ncm	L 0.01mm Increment	B		F		
					Standard	Selection	Standard	1mm Increment	
B, F Fixed JPra BJPra HJPra SJPra CJPra	B Fixed and F Configurable JPRAM BJPRAM HJPRAM SJPRAM CJPRAM	B Selectable and F Fixed JPRFA BJPRFA HJPRFA SJPRFA CJPRFA	3	98	2.00-10.00	6	5	5	3-36 (M=F=Mx3)
			4	225		7	6	6	
			5	461		8	7	8	
			6	784		10	8	10	
			8	1911		13	10	12	
			10	3783		17	12	13	
12	6605	19	14	17					

*The tightening torque (ref. value) for hardened products is strength class 8.8. (See technical data on P. 2297.) Not applicable when using locking materials or lock washers.

M (Coarse)	Unit Price														
	B, F Fixed					B Fixed and F Configurable					B Selectable and F Fixed				
	JPra	BJPra	HJPra	SJPra	CJPra	JPRAM	BJPRAM	HJPRAM	SJPRAM	CJPRAM	JPRFA	BJPRFA	HJPRFA	SJPRFA	CJPRFA
3															
4															
5															
6															
8															
10															
12															



Ordering Example
 (Hex, B and F Fixed) JPra4 - L10.00
 (Hex, B Fixed and F Configurable) JPRAM8 - L15.00
 (Hex, B Selectable and F Fixed) JPRFA6 - L20.00 - 8 - F12

Alterations Code	Radius to End Face		Seating Sensor Holes																													
	CRC		EAT																													
Spec.	Chamfering of workpiece receiving-surface is changed to R1. Hex is R size in the right table. Ordering Code: CRC ⚠ Applicable when L>15. ⚠ Hex is applicable to B<10.		Machines seating sensor holes on the work-receiving surface. Hole diameters are shown in the table below. Ordering Code: EAT ⚠ Applicable when D<=6. ⚠ Application conditions vary depending on F and L dimensions.																													
	<table border="1"> <thead> <tr> <th>B</th> <th>R</th> </tr> </thead> <tbody> <tr><td>10</td><td>2</td></tr> <tr><td>12, 13</td><td>2.5</td></tr> <tr><td>14</td><td>3</td></tr> <tr><td>17, 19</td><td>4</td></tr> </tbody> </table>	B	R	10	2	12, 13	2.5	14	3	17, 19	4		<table border="1"> <thead> <tr> <th>M</th> <th>Narrow Hole Dia. d1</th> <th>Through Hole Dia. d2</th> <th>Applicable Overall Length Conditions</th> </tr> </thead> <tbody> <tr><td>6</td><td>1.0</td><td>1.5</td><td>F+L<=20</td></tr> <tr><td>8</td><td>1.0</td><td>2.5</td><td>F+L<=30</td></tr> <tr><td>10</td><td>1.5</td><td>3.5</td><td>F+L<=40</td></tr> <tr><td>12</td><td>1.5</td><td>4.5</td><td>F+L<=50</td></tr> </tbody> </table>	M	Narrow Hole Dia. d1	Through Hole Dia. d2	Applicable Overall Length Conditions	6	1.0	1.5	F+L<=20	8	1.0	2.5	F+L<=30	10	1.5	3.5	F+L<=40	12	1.5	4.5
B	R																															
10	2																															
12, 13	2.5																															
14	3																															
17, 19	4																															
M	Narrow Hole Dia. d1	Through Hole Dia. d2	Applicable Overall Length Conditions																													
6	1.0	1.5	F+L<=20																													
8	1.0	2.5	F+L<=30																													
10	1.5	3.5	F+L<=40																													
12	1.5	4.5	F+L<=50																													



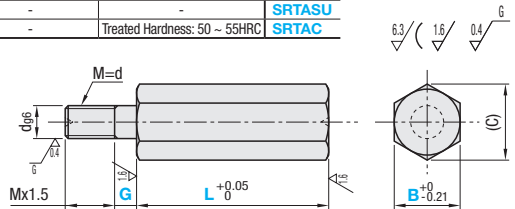
Alterations
 Part Number - L - B - F - (CRC, EAT)
 JPra10 - L20.50 - CRC
 HJPRAM10 - L15.00 - F18 - EAT

Medium Accuracy



Material	Surface Treatment	Hardness	Type
① S45C Equivalent	Black Oxide	-	SRTAB
② S45C Equivalent	Hard Chrome Plating	Plating Hardness: 750HV ~	SRTAR
③ S45C Equivalent	Black Oxide	Treated Hardness: 45 ~ 50HRC	SRTAHB
④ S45C Equivalent	Hard Chrome Plating	Treated Hardness: 45 ~ 50HRC Plating Hardness: 750HV ~	SRTAHR
⑤ SUS304	-	-	SRTASU
⑥ SUS40C or 13Cr stainless	-	Treated Hardness: 50 ~ 55HRC	SRTAC

⚠ SUS304 may not be polished and may have no centering hole.



Part Number	Type	B	L 0.01mm Increment	G 1mm Increment Threaded only	(C)	d	M (Coarse)	Tightening Torque Ncm	Unit Price Threaded					
									① SRTAB	② SRTAR	③ SRTAHB	④ SRTAHR	⑤ SRTASU	⑥ SRTAC
SRTAB SRTAR SRTAHB SRTAHR SRTASU SRTAC	B	6	10.00-50.00	0 or 2<=G<=d x 2	6.9	4	M4	225						
		7			8.1									
		8	15.00-50.00		9.2	5	M5	461						
		10			11.5									
		12	20.0-80.00		13.9	6	M6	784						
		13			15									
		14			16.2									
		17			19.6									
		19			21.9									
		24			27.7									

⚠ SUS40C or 13Cr stainless is B<=8.

*The tightening torque (ref. value) for hardened products is strength class 8.8. (See technical data on P. 2297.) Not applicable when using locking materials or lock washers.

⚠ For full thread, specify a G dimension of 0 and NNC alteration.



Ordering Example
 Part Number - L - G
 Type - B - L - G
 SRTAB 8 - L20.00 - G6



Alterations
 Part Number - L - G - (DRC, NNC)
 SRTAB10 - L30.00 - G3 - DRC

Alterations Code	Screwdriver Slot	Relief
	DRC	
Spec.	Machines a screwdriver slot of width 0.8mm and depth 1mm.	Adds a relief at the thread end. ⚠ Applicable when G=0.