

# Motor Mounting Plates for Conveyor

Dedicated web site <http://fa.misumi.jp/cvs/>

Conveyor selecting, component purchases, and easy search for maintenance parts are available.

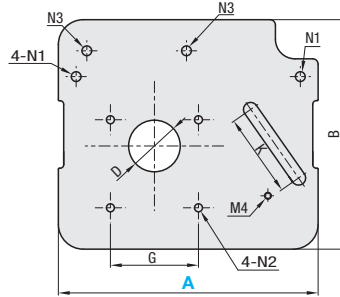
## Motor Mounting Plate for Conveyor



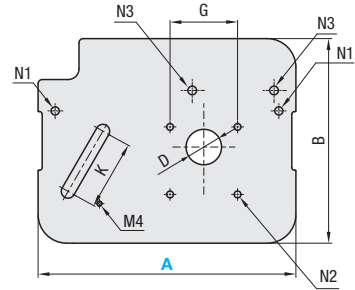
RoHS10

Type	Material	Surface Treatment
MOBP	SPPC	Nickel Plating

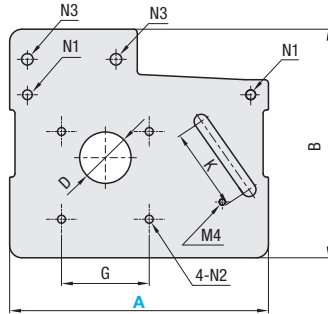
MOBP-SA □  
MOBP-GA □



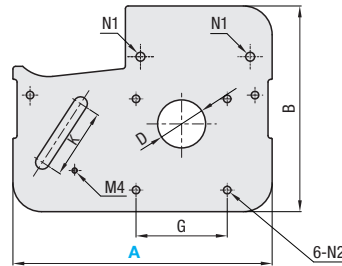
MOBP-GB □



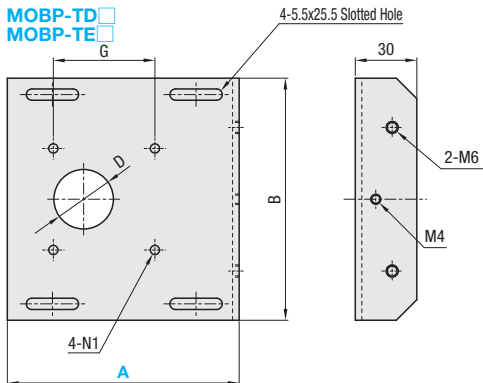
MOBP-TB □



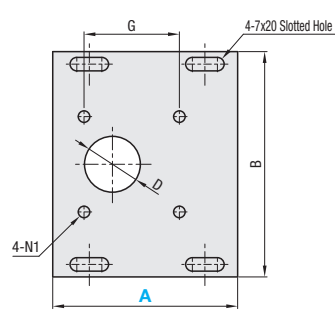
MOBP-TC □



MOBP-TD □  
MOBP-TE □



MOBP-KN □



⊙ Thickness is 3.2 in all part numbers.  
⊙ For detail dimensions, see the e-Catalog.

Part Number Type	Shape Size	Motor Size	A	B	D	G	K	Through Hole			Output (W)	Applicable Conveyors	Unit Price
								N1	N2	N3			
MOBP	SA	60	146	129	29	49.5	47	5.5	4.5	5.5	6	SVKA	
		80			35	66.5	47	5.5	5.5	5.5	25	SVKB	
	GA	60	146	129	29	49.5	47	5.5	4.5	6.5	6	CVGA	
		80			35	66.5	47	5.5	5.5	6.5	25	CVGB	
	GB	60	189	150	26	49.5	51	6	5	6.4	6	CVGC	
		80			35	66.5	51	6	6	6.4	25	CVGD	
	TB	60	146	129	29	49.5	47	5.5	4.5	6.5	6	CVGTA	
		80			35	66.5	47	5.5	5.5	6.5	25	CVGTB	
	TC	60	189	150	29	49.5	51	5.5	6.5	-	25	CVGTB	
		80			37	73.5	51	5.5	6.5	-	40	CVGTN	
	TD	60	113	118	29	49.5	-	4.5	-	-	6	CVGTN	
		80			35	66.5	-	5.5	-	-	25	CVGTP	
TE	60	169	118	29	49.5	-	6.5	-	-	40	CVGTP		
	80			37	73.5	-	6.5	-	-	40	CVGTP		
KN	60	96	117	29	49.5	-	6	-	-	6	SVKN, SVKR		
	80			35	66.5	-	6	-	-	25	SVKN, SVKR		
		90		37	73.5	-	7	-	-	40	SVKN, SVKR		



Ordering Example

Part Number - No. - Motor Size - A  
MOBP - SA - 60 - 146