

# Conveyor Sensor Brackets / Post-Assembly Insertion Nuts

## For Photoelectric Sensors

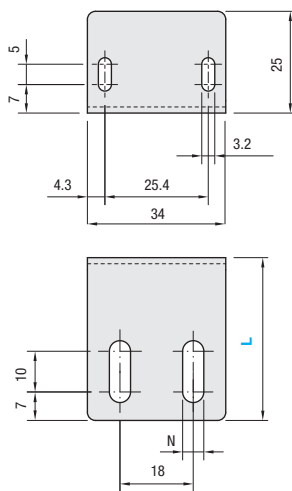
■ **Features:** Conveyor Sensor Brackets with the sensor height, width, and angle adjustable.

### Conveyor Sensor Brackets

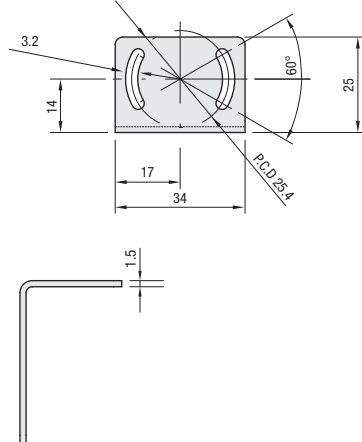


RoHS 10

### BFCB (Straight Slotted Hole Type)



### BFCBN (Arched Slotted Hole Type)



■ **Material:** Stainless Steel

Part Number				Unit Price
Type	L	No.	N	
Straight Slotted Hole Type <b>BFCB</b>	30	3	3.2	
		5	5.2	
		6	6.2	
	40	3	3.2	
		5	5.2	
		6	6.2	
Arched Slotted Hole Type <b>BFCBN</b>	30	3	3.2	
		5	5.2	
		6	6.2	
	40	3	3.2	
		5	5.2	
		6	6.2	

### Sensor Compatibility Table

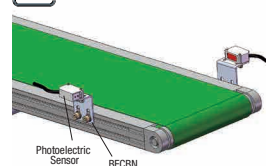
Manufacturer	Part Number
MISUMI	MZL-D, MZL-R, MZL-T, MZ-WD, MZ-LD, MZ-D
Keyence	PZ-G, PZ2, PZ-V/M Series
SUN	CX-L400, LS-H Series
OMRON	E3Z, E3ZM Series



Part Number		
Type	L	No.
BFCB	40	5



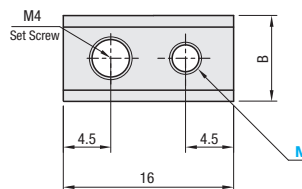
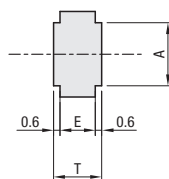
Example



Photoelectric Sensor BFCBN

■ **Features:** Post-assembly insertion nuts with set screws. Useful for mounting items such as a sensor if you need to install them later.

### Post-Assembly Insertion Nuts for Conveyor



M	Reference Tightening Torque (N·m)
3	0.9
4	2.2
5	4.6

- ① Use pre-assembly insertion nuts to mount heavy objects such as a stand.
- ② Nuts dedicated for the aluminum extrusion of MISUMI conveyors. Use them for the aluminum extrusion slots (for M5 or M6). See the Conveyor Main Unit pages and select an appropriate item.

■ **Material:** SUS316 Equivalent, Sintered

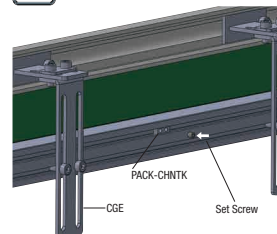
Part Number		Accessory (1 pc.)		A	B	E	T	Qty. per Pkg.	Unit Price	Volume Discount Rate
TYPE	M	Set Screw	1 pkg.						2-3 pkgs.	
For Aluminum Extrusion Slot M5 <b>PACK-CHNT5</b>	3	M4x5		4.9	7	2.8	4	10 pcs.		
	4									
For Aluminum Extrusion Slot M6 <b>PACK-CHNT6</b>	3	M4x6		5.9	8	3.3	4.5			
	4									
	5									



Part Number		
Type	M	
PACK-CHNT6	5	



Example Position can be fixed with a nut alone by fastening the set screw included.



CGE PACK-CHNTK Set Screw