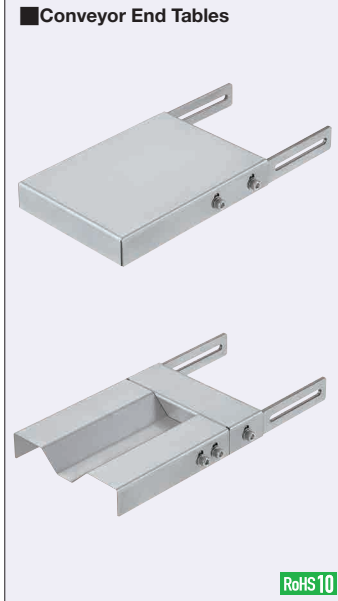


Conveyor End Tables

Dedicated web site <http://fa.misumi.jp/cvs/>

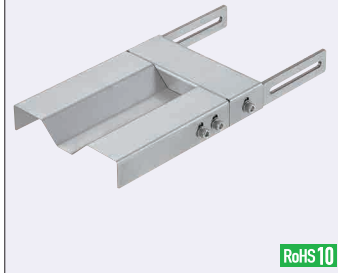
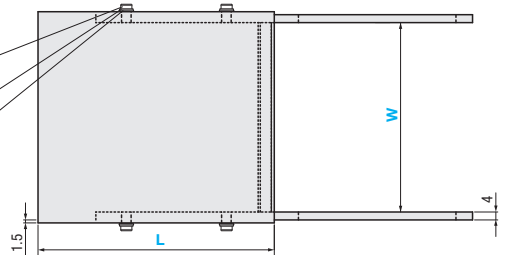
Conveyor selecting, component purchases, and easy search for maintenance parts are available.

■ **Features:** The table to temporarily stock the items carried by the conveyor.

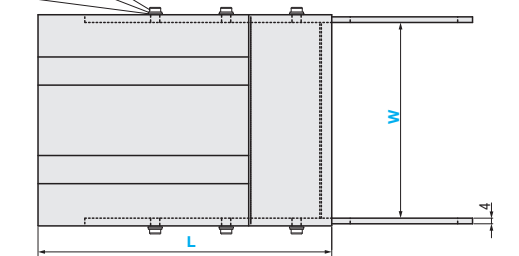
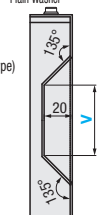


CGST
(Flat Type)

- 4-M6x10 Hex Socket Head Cap Screw
- 4-M6 Spring Washer
- 4-M6 Plain Washer



CGSW
(Concave/Convex Type)



Material: SUS304

Ⓜ When $L \geq 310$, we recommend the alteration YNS (Welding Nut + Leg).

Part Number	W		L		X Selection	V Selection	B	E	F	P	Allowable Load (Kgf)	Unit Price			
	1mm Increment	10mm Increment	10mm Increment	Selection								CGST	CGSW		
Flat Type CGST Concave/Convex Type CGSW	85-150		100-250	100	150	15	25	20	50	20	15.0				
			260-400				50	25	100	100					
			410-500				25	20	50	150					
	151-250		100-250	100	150	50	25	20	50	20					
			260-400				50	25	100	100					
			410-500				25	20	50	150					
	251-350		100-250	100	150	90	25	20	50	20					
			260-400				130	50	25	100		100			
			410-500				25	20	50	150					
	351-500		100-250	100	150	100	25	20	50	20					
			260-400				150	50	25	100		100			
			410-500				25	20	50	150					

Ⓜ V dimension needs to be selected only for CGSW.

Ordering Example
Part Number - W - L - X - V
CGST - 250 - 300 - 100

CGSW - 255 - 400 - 150 - 130

Alterations
Part Number - W - L - X - V - (YN, YNS)
CGSW - 250 - 300 - 100 - 70 - YNS750

Alterations Code	Welded Nut	Welding Nut + Leg
	YN	YNS
Spec.	<p>M6 nuts are added (welded) on both ends of the table side. This will enhance versatility of mounting. Application conditions are: CGST: $L - (B + P + 15) \geq 70$ CGSW: $L - (F + E + P + 15) \geq 70$</p>	<p>Legs to support load are added. Configurable when $W \leq 151$. 200 \leq YNS \leq 1200 Assembly by customers required (shipped unassembled). Application conditions are: CGST: $L - (B + P + 15) \geq 70$ CGSW: $L - (F + E + P + 15) \geq 70$ Ordering Code: YNS800 Specification Range: 200-1200 (10mm Increment) Accessory: Hex Socket Head Cap Screw x 2 pcs.</p>

