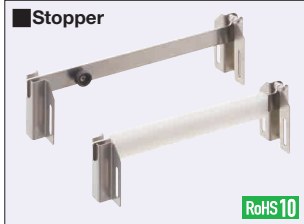


# Stoppers, Transfer Rollers

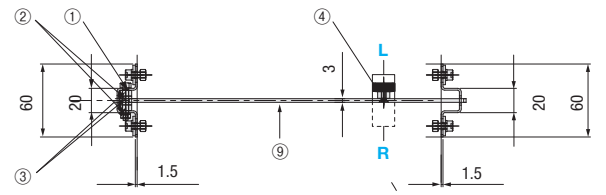
**Features:** Stoppers with open/close mechanism. The stoppers with engineering plastic rails are also available.



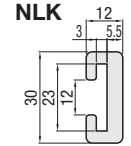
RoHS 10

Part No.	Part Name	Qty.	Material	
			CSTP	CSTE
①	Hinge Pin	1	SUS304	
②	Metal Washer	2	SUS304	
③	Plastic Washer	2	Polyacetal	
④	Knobbed Plastic Clamp Knob - Tapped	1	ABS, SUS304	-
④	Knobbed Plastic Clamp Knob - Threaded	1	ABS, SUS304	
⑤	Hex Socket Flat Head Cap Screw	1	SUS304	-
⑥	Hex Socket Head Cap Screw	4	SUS304	
⑦	Washer for Slotted Holes	4	SUS304	
⑧	Spring Washer	4	SUS304	
⑨	Stopper Plate	1	SUS304	
⑩	Bracket	2	SUS304	
⑪	Engineering Plastic Rail	1	Ultrahigh molecular weight polyethylene	

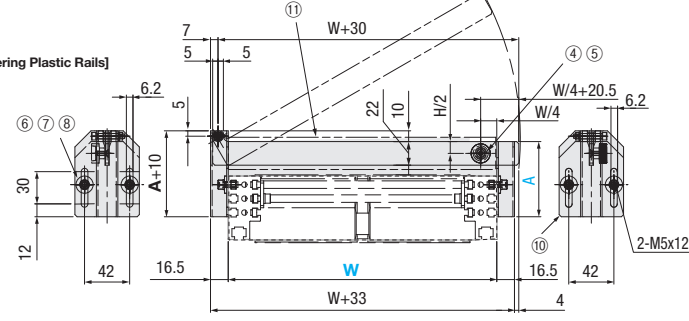
**CSTP**  
**CSTE**  
(Engineering Plastic Rail Set)



[Applicable Engineering Plastic Rails]



(Matching Plate Dimension 22x3)

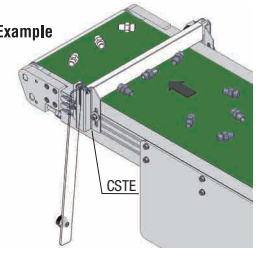


- ① Since it can be fully opened, install it so that the worker can stand on the fulcrum shaft side. (See App. Example.)
- ② The engineering plastic rails can be secured by pressing down the thread part of the knob.
- ③ Please note that the workpiece may be lifted if a belt with high friction coefficient is used.

Part Number	W 1mm Increment	A	Knob Mounting Direction	Unit Price	
				A70	A120
CSTP	65~100	70	L R		
	101~200				
	201~300				
	301~400				

Part Number	W 1mm Increment	A	Unit Price	
			A70	A120
CSTE	65~100	70		
	101~200			
	201~300			
	301~400			

**EX** Example



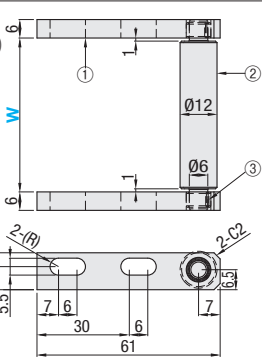
Ordering Example: Part Number - W - A - Knob Mounting Direction  
 CSTP - 250 - 70 - L  
 CSTE - 200 - 120

**Features:** The roller that makes conveyance between conveyors smoother.

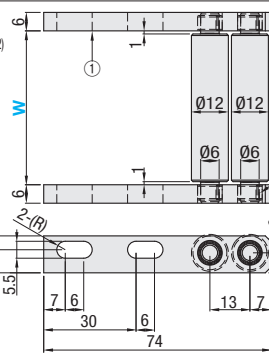


RoHS 10

**CGNR1**  
(Number of Rollers: 1)



**CGNR2**  
(Number of Rollers: 2)

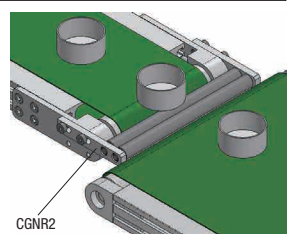


- ① Install with good parallelism.
- ② Bushings are pressed-in. Cannot be removed.
- ③ When selecting Plastic Rollers: Limit the load per roller to 3kgf or less.

	① Bracket	② Roller		③ Oil-Free Bushing
		Plastic	Steel	
<b>M</b> Material	A6063	Polyacetal	SUS304	Ethylene tetrafluoride resin layer with filler material Sintered bronze layered steel back metal layer (SPCC, Tin Plated)
<b>S</b> Surface Treatment	Clear Anodize	-	-	-

Part Number Type	Roller Material	W 1mm Increment	Unit Price		
			W30~100	W101~200	W201~300
CGNR	P (Polyacetal)	30~300			
			1		
	S (SUS304)				
			2		

**EX** Example



① Applicable Conveyors: SVKA, SVKB

Ordering Example: Part Number - Roller Material - W  
 CGNR1 - P - 100