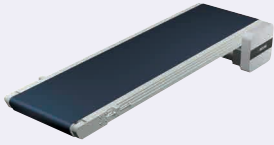


# Flat Belt Conveyor High Power Type

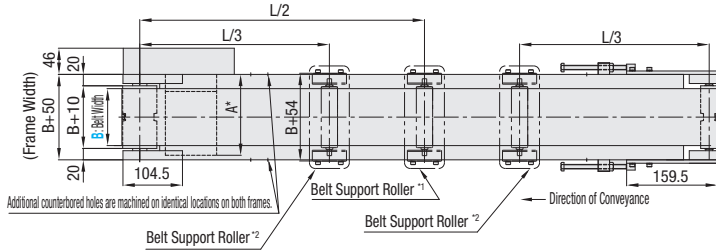
With Meandering Prevention Crosspiece, Head Drive, 3-Groove Frame (Pulley Dia. 60mm / 30mm)

■ **Features:** Up to 90W, Medium distance (up to 6m) transfer suited conveyor. Meandering can be prevented by the use of crosspiece.



CVSF

60W/90W Motor Type

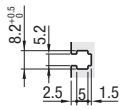
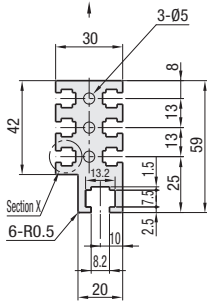


Additional counterbored holes are machined on identical locations on both frames.

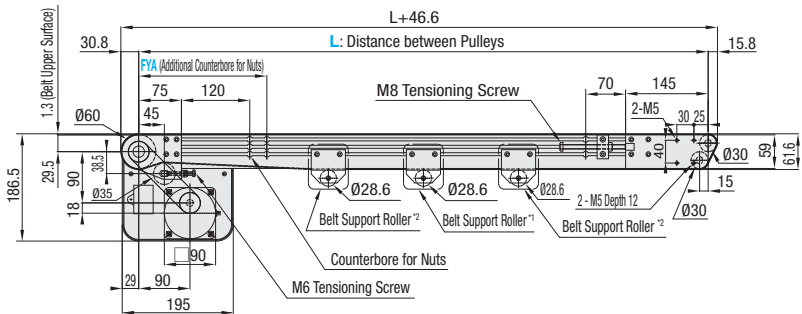
	Frame	Motor Cover	Pulley Holder
M Material	Aluminum	SPCC	SS400
S Surface Treatment	Clear Anodize	Paint	Paint

Frame Cross Section and Enlarged View (Symmetrical)

Carrying Surface Side



Part X (for M5)



\*1 When  $L \geq 2005$ , a belt support roller is mounted in the diagram location.

\*2 When  $L \geq 4005$ , 2 belt support rollers are mounted in the diagram locations.

⚠ The dimensions in the diagram is for Belt Specifications H (0.8mm THK.).

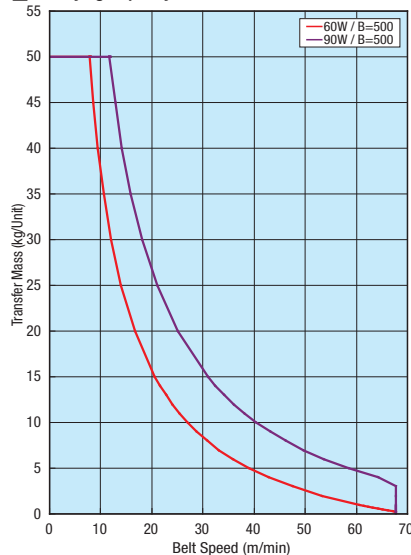
Take note that belt thickness varies by Belt Specifications. For Belt Specifications, see P1279--.

⚠ Compatible with JIS standard hex nuts.

\* A Dimension Details

Output (W)	Motor		Reduction Ratio	A
	Specification	Manufacturer		
60W	Induction Motor	Panasonic	5~180	180.0
		Oriental	5~180	185.0
		Taiwanese	5~75	182.6
	Variable Speed Motor	Oriental	90~180	191.6
		Taiwanese	5~180	215.0
		Taiwanese	5~75	194.6
90W	Induction Motor	Panasonic	90~180	203.6
		Oriental	5~180	195.0
		Taiwanese	5~180	200.0
	Variable Speed Motor	Taiwanese	5~75	195.6
		Oriental	90~180	204.6
		Taiwanese	5~180	230.0
		Taiwanese	5~75	209.6
		Taiwanese	90~180	218.6

■ Conveying Capacity



\*Reference Value may different by selected Belt.

■ Gearhead Reduction Ratio

\*May decrease depending on load condition.

Gearhead Reduction Ratio	Belt Speed (m/min)	
	50Hz	60Hz
5	56.4	67.7
7.5	37.6	45.1
9	31.3	37.6
12.5	22.6	27.1
15	18.8	22.6
18	15.7	18.8
25	11.3	13.5
30	9.4	11.3
36	7.8	9.4
50	5.6	6.8
60	4.7	5.6
75	3.8	4.5
90	3.1	3.8
100	2.8	3.4
120	2.4	2.8
150	1.9	2.3
180	1.6	1.9