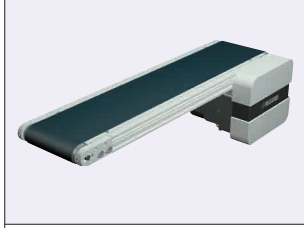


# Flat Belt Conveyors

With Meandering Prevention Crosspiece, Head Drive, 2-Groove Frame (Pulley Dia. 30mm)

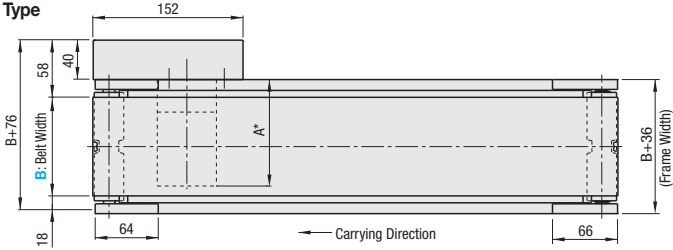
■ **Features:** The conveyor maintains good running straightness by the use of meandering prevention crosspiece to suppress lateral force induced meandering. Superior to CVSC in maintainability and space saving.



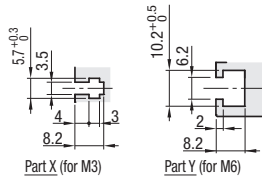
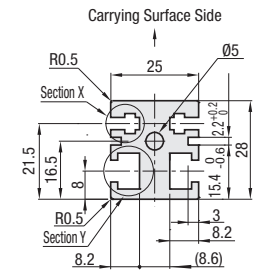
	Frame	Motor Cover	Pulley Holder
<b>M</b> Material	Aluminum	Aluminum	Aluminum
<b>S</b> Surface Treatment	Clear Anodize	Paint	Paint

## CVGB

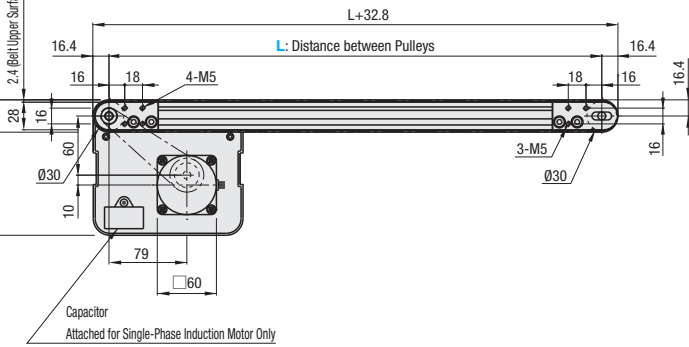
### 6W Motor Type



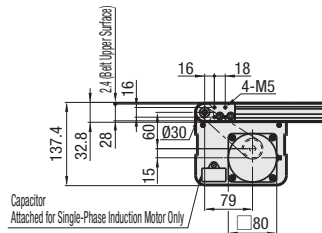
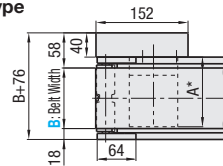
Frame Cross Section and Enlarged View (Symmetrical)



☛ Compatible with JIS standard hex nuts.



### 25W Motor Type



\* When  $L \geq 290$ , each slot has four (4) nuts inserted.

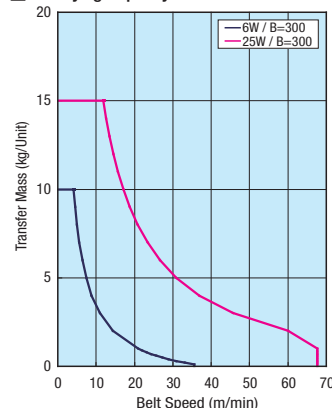
When counterbores for inserting nuts are required, please specify in alterations.

☛ The dimensions in the diagram is for Belt Specifications H (0.8mm THK.). Take note that belt thickness varies by Belt Specifications. For Belt Specifications, see P.1279--.

#### \* A Dimension Details

Output (W)	Motor		Reduction Ratio	A
	Specification	Manufacturer		
6W	Induction Motor	Panasonic	5-25	101.0
		Panasonic	30-180	108.0
		Oriental	5-25	105.0
		Oriental	30-180	115.0
	Variable Speed Motor	Taiwanese	5-75	114.7
		Taiwanese	90-180	120.7
		Oriental	5-25	115.0
		Oriental	30-180	125.0
25W	Induction Motor	Taiwanese	5-75	126.9
		Taiwanese	90-180	132.9
		Panasonic	5-180	115.0
		Oriental	5-18	117.0
	Variable Speed Motor	Oriental	25-180	127.5
		Taiwanese	5-75	129.0
		Taiwanese	90-180	136.0
		Oriental	5-18	127.0
Variable Speed Motor	Oriental	25-180	137.5	
	Taiwanese	5-75	139.5	
	Taiwanese	90-180	146.5	
	Oriental	5-18	127.0	

#### ■ Conveying Capacity



\*Reference Value may differ by selected Belt.

#### ■ Gearhead Reduction Ratio

\*May decrease depending on load condition.

Gearhead Reduction Ratio	Belt Speed (m/min)	
	50Hz	60Hz
5	56.4	67.7
7.5	37.6	45.1
9	31.3	37.6
12.5	22.6	27.1
15	18.8	22.6
18	15.7	18.8
25	11.3	13.5
30	9.4	11.3
36	7.8	9.4
50	5.6	6.8
60	4.7	5.6
75	3.8	4.5
90	3.1	3.8
100	2.8	3.4
120	2.4	2.8
150	1.9	2.3
180	1.6	1.9