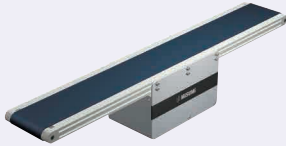


Flat Belt Conveyor SV Series

With Meandering Prevention Crosspiece, Center Drive, 2-Groove Frame (Pulley Dia. 30mm)

■ **Features:** Streamlined structuring has achieved the low cost. The center drive section is adjustable. The conveyor maintains good running straightness by the use of meandering prevention crosspiece to suppress lateral force induced meandering.



SVKR

*When L≥490, each slot has four (4) nuts inserted. When counterbores for inserting nuts are required, please specify in alterations.

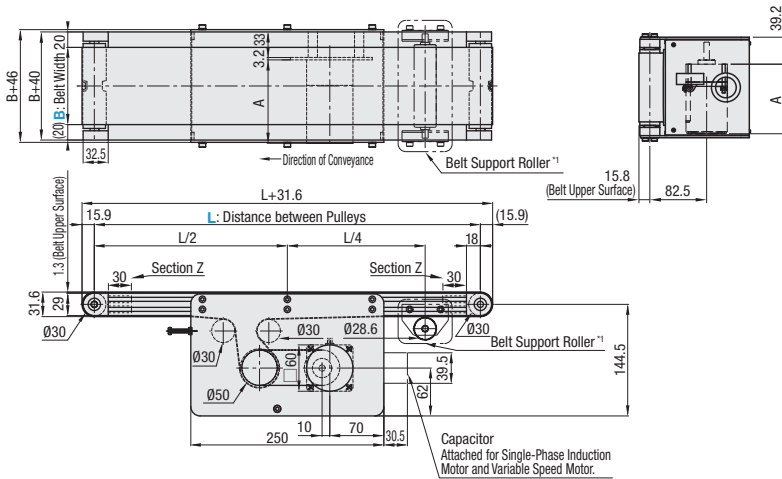
*1 When L≥2005, belt support rollers are mounted at these positions.

Ⓜ The dimensions in the diagram is for Belt Specification H (0.8mm THK.). Take note that belt thickness varies by Belt Specifications. For Belt Specifications, see P.1279.

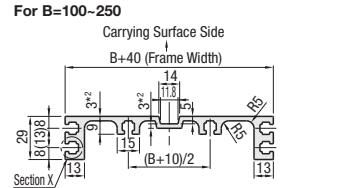
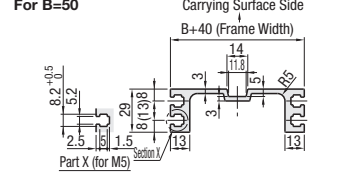
Ⓜ The Z section of the frame is used for pulley holder mounting. The nuts cannot be moved to this area.

	Frame	Motor Cover ^①	Motor Cover ^②	Pulley Holder
M aterial	Aluminum	Aluminum	SPCC	Aluminum
S urface Treatment	Clear Anodize	Paint	Paint	Paint

6W Motor Type

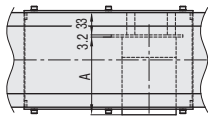


Frame Cross Section and Enlarged View

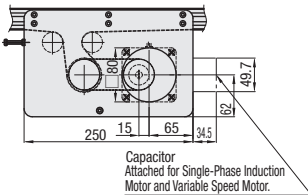


- Ⓜ For B=50, down facing slot is not provided.
- Ⓜ For B=200 and 250, *2 section thickness is 4mm.
- Ⓜ Compatible with JIS standard hex nuts.
- Ⓜ A pre-assembly insertion nut is not included.

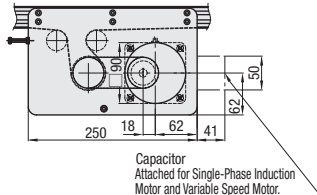
25W, 40W, 60W, 90W Motor Type



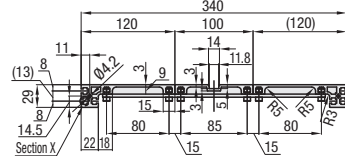
25W Motor Type



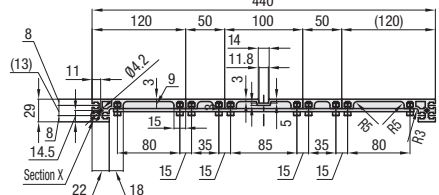
40W, 60W, 90W Motor Type



For B=300



For B=400

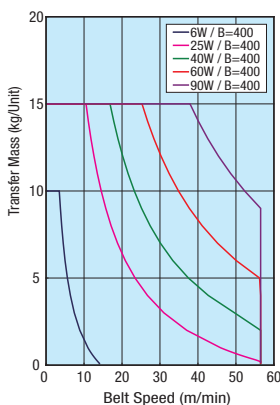


A Dimension Details

Output (W)	Motor Specification	Manufacturer	Reduction Ratio	A
6W	Induction Motor	Panasonic	5-25	101.0
			30-180	108.0
		Oriental	5-25	105.0
			30-180	115.0
	Variable Speed Motor	Taiwanese	5-75	114.7
			90-180	120.7
		Oriental	5-25	115.0
			30-180	125.0
25W	Induction Motor	Panasonic	5-75	126.9
			90-180	132.9
		Oriental	5-18	117.0
			25-180	127.5
	Variable Speed Motor	Taiwanese	5-75	129.0
			90-180	136.0
		Oriental	5-18	127.0
			25-180	137.5
90W	Panasonic	5-75	139.5	
		90-180	146.5	
	Oriental	5-18	127.0	
		25-180	137.5	

Output (W)	Motor Specification	Manufacturer	Reduction Ratio	A
40W	Induction Motor	Panasonic	5-18	147.0
			25-180	165.0
		Taiwanese	5-75	161.6
			90-180	170.6
	Variable Speed Motor	Oriental	5-18	157.0
			25-180	175.0
		Taiwanese	5-75	172.1
			90-180	181.1
60W	Induction Motor	Panasonic	5-180	180.0
			5-180	185.0
		Taiwanese	5-75	182.6
			90-180	191.6
	Variable Speed Motor	Oriental	5-180	215.0
			5-75	194.6
		Taiwanese	90-180	203.6
			5-180	195.0
90W	Induction Motor	Panasonic	5-180	200.0
			5-75	195.6
		Taiwanese	90-180	204.6
			5-180	230.0
	Variable Speed Motor	Oriental	5-75	209.6
			90-180	218.6

Conveying Capacity



Gearhead Reduction Ratio

*Conveyance speeds are reference values based on IM (motor rotational speed 1,500 rpm [50 Hz]/1,800 rpm [60 Hz]).
*May decrease depending on load condition.

Gearhead Reduction Ratio	Belt Speed (m/min)	
	50Hz	60Hz
5	47.1	56.5
7.5	31.4	37.7
9	26.2	31.4
12.5	18.8	22.6
15	15.7	18.8
18	13.1	15.7
25	9.4	11.3
30	7.9	9.4
36	6.5	7.9
50	4.7	5.7
60	3.9	4.7
75	3.1	3.8
90	2.6	3.1
100	2.4	2.8
120	2.0	2.4
150	1.6	1.9
180	1.3	1.6

Ⓜ For motor specification SCM, this is adjustable up to (1/15) × (max. speed).
The weight that can be conveyed decreases as the speed decreases.