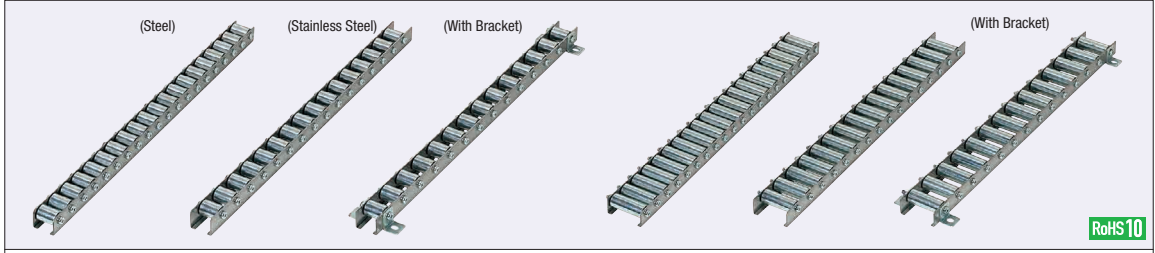


Roller Carriers

Roller Width 25, 50mm Type

■ **Features:** Lightweight as compared to Roller Conveyor, and can be easily installed at various locations.



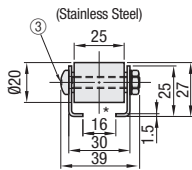
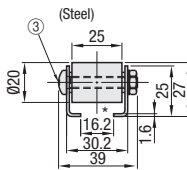
Roller Width	Type	Roller Pitch			① Roller		Bearing	② Frame		③ Screw, Nut		④ Bracket	
		P=25	P=30	P=35	Material	Surface Treatment	Material	Material	Surface Treatment	Material	Surface Treatment	Material	Surface Treatment
25	No Bracket	CRONEW	CRONFW	CRONW	Steel	Trivalent Chromate Hard Chrome Plating	Steel	Steel	Hot Dip Plating*	Steel	Trivalent Chromate	-	-
	With Bracket	CRONEWB	CRONFWB	CRONWB								Steel	Trivalent Chromate
	No Bracket	-	-	CROCWB	Stainless Steel	-	Stainless Steel	Stainless Steel	-	Stainless Steel	-	Stainless Steel	-
	With Bracket	-	-	CROSWB								Stainless Steel	-
50	No Bracket	CRONEX	CRONFX	CRONX	Steel	Trivalent Chromate	Steel	Steel	Hot Dip Plating*	Steel	Trivalent Chromate	Steel	-
	With Bracket	CRONEXB	CRONFXB	CRONXB								Steel	Trivalent Chromate

* Hot Dip Plating (Fused Plating of Zinc, Aluminum and Magnesium)

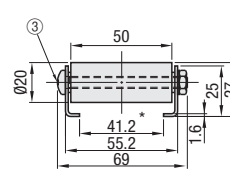
Allowable Load per Wheel

Roller Width	Allowable Load
25	40kgf (392N)
50	50kgf (480N)

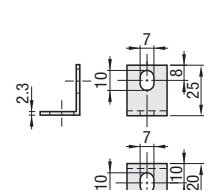
Roller Width 25mm



Roller Width 50mm



④ Included Brackets (x4 pcs.)



* The groove dim. for 25mm width roller: 16.2⁺¹² (steel) or 16⁺¹² (stainless steel), for 50mm width roller: 41.2⁺¹²

Part Number	Type	Wheel Qty.	L			Unit Price							
			P=25	P=30	P=35	Roller Width 25mm			Roller Width 50mm				
						CRONW	CRONEW CRONFW	CRONWB CRONFWB CRONWB	CROCWB	CROSW	CRONWB	CRONEX CRONFX CRONX	CRONEXB CRONFXB CRONXB
Roller Width 25mm													
No Bracket													
2		2	(48)	(58)	(68)								
3		3	(73)	(88)	(103)								
4		4	(98)	(118)	(138)								
5		5	(123)	(148)	(173)								
6		6	(148)	(178)	(208)								
7		7	(173)	(208)	(243)								
8		8	(198)	(238)	(278)								
9		9	(223)	(268)	(313)								
10		10	(248)	(298)	(348)								
11		11	(273)	(328)	(383)								
With Bracket													
12		12	(298)	(358)	(418)								
13		13	(323)	(388)	(453)								
14		14	(348)	(418)	(488)								
15		15	(373)	(448)	(523)								
16		16	(398)	(478)	(558)								
17		17	(423)	(508)	(593)								
18		18	(448)	(538)	(628)								
19		19	(473)	(568)	(663)								
20		20	(498)	(598)	(698)								
Roller Width 50mm													
No Bracket													
21		21	(523)	(628)	(733)								
22		22	(548)	(658)	(768)								
23		23	(573)	(688)	(803)								
24		24	(598)	(718)	(838)								
25		25	(623)	(748)	(873)								
26		26	(648)	(778)	(908)								
27		27	(673)	(808)	(943)								
With Bracket													
28		28	(698)	(838)	(978)								
29		29	(723)	(868)	(1013)								
30		30	(748)	(898)	(1048)								
31		31	(773)	(928)	(1083)								
32		32	(798)	(958)	(1118)								
33		33	(823)	(988)	(1153)								

⚠ For loading weight, 40kgf (392N) per wheel for 25mm width Rollers, and 50kgf (490N) for 50mm width Rollers.



Method for Mounting Brackets

Remove 2 nuts from where the bracket is desired to be mounted, and mount the bracket using the included screws.