

# Roller Carriers

## Roller Width 15mm Type

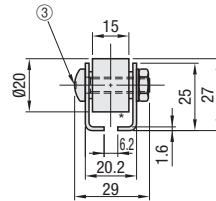
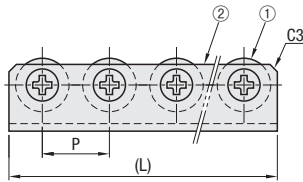
■ **Features:** Lightweight as compared to Roller Conveyor, and can be easily installed at various locations.



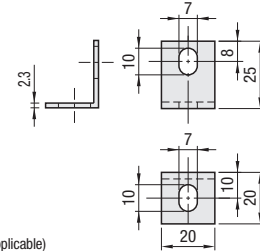
RoHS10

Type	Roller Pitch			① Rollers		Bearing	② Frame		③ Screw, Nut		④ Bracket	
	P=25	P=30	P=35	Material	Surface Treatment	Material	Material	Surface Treatment	Material	Surface Treatment	Material	Surface Treatment
No Bracket	CRONEY	CRONFY	CRONY	Steel	Trivalent Chromate	Steel	SPHC-P	Hot Dip Plating*	Steel	Trivalent Chromate	-	-
With Bracket	CRONEYB	CRONFYB	CRONYB								Steel	Trivalent Chromate

\* Hot Dip Plating (Fused Plating of Zinc, Aluminum and Magnesium)



④ Included Brackets (x4 pcs.)



### ■ Allowable Load per Wheel

Wheel Material	Allowable Load
Steel, Stainless Steel	30kgf(294N)

\* Groove width dimension will be 6.2<sup>+0.2</sup>, (M6 screw applicable)

Part Number	Type	Wheel Qty.	L			Unit Price	
			P=25	P=30	P=35	CRONEY CRONFY CRONY	CRONEYB CRONFYB CRONYB
2			(48)	(58)	(68)		
3			(73)	(88)	(103)		
4			(98)	(118)	(138)		
5			(123)	(148)	(173)		
6			(148)	(178)	(208)		
7			(173)	(208)	(243)		
8			(198)	(238)	(278)		
9			(223)	(268)	(313)		
10			(248)	(298)	(348)		
11			(273)	(328)	(383)		
12			(298)	(358)	(418)		
13	No Bracket		(323)	(388)	(453)		
14	CRONEY		(348)	(418)	(488)		
15	CRONFY		(373)	(448)	(523)		
16	CRONY		(398)	(478)	(558)		
17			(423)	(508)	(593)		
18			(448)	(538)	(628)		
19	With Bracket		(473)	(568)	(663)		
20	CRONEYB		(498)	(598)	(698)		
21	CRONFYB		(523)	(628)	(733)		
22	CRONYB		(548)	(658)	(768)		
23			(573)	(688)	(803)		
24			(598)	(718)	(838)		
25			(623)	(748)	(873)		
26			(648)	(778)	(908)		
27			(673)	(808)	(943)		
28			(698)	(838)	(978)		
29			(723)	(868)	(1013)		
30			(748)	(898)	(1048)		
31			(773)	(928)	(1083)		
32			(798)	(958)	(1118)		
33			(823)	(988)	(1153)		



Ordering Example

Part Number  
CRONEY15



Example

### ■ Method for Mounting Brackets

Remove 2 nuts from where the bracket is desired to be mounted, and mount the bracket using the included screws.

