

Bearing Integrated Urethane Rollers / Urethane Rollers / Knurled Urethane Rollers

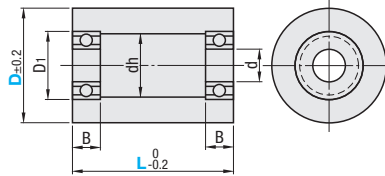
Set Screw Type

■ **Features:** Economical Urethane Rollers with bearings directly adhesive bonded.



UMJ

6.3/√



Material: Bearing: Steel
Urethane Roller: Polyurethane (Natural Color)
Hardness: Shore A90

RoHS 10 For bearing detailed dimensions, see P989.

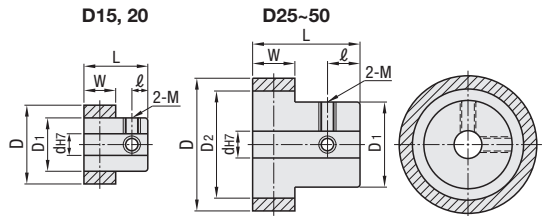
Part Number Type	D	L Selection (10 mm Increment)	d	D1	dh	B	Bearing Used	Unit Price											
								L20	L30	L40	L50	L60	L70	L80	L90	L100			
UMJ	20	20~100	6	15	10	5	696ZZx2												
	25		6	15	10	5	696ZZx2												
	30		8	19	15	6	698ZZx2												
	35	30~100	10	22	18	6	6900ZZx2	-											
	40		12	28	24	8	6001ZZx2	-											
	50		15	32	28	9	6002ZZx2	-											

Ordering Example Part Number - L
UMJ30 - 30



Type	Material		Hardness
	Core	Lining	
UMHSH	SUS304	Urethane	Shore A90
UMHS			Shore A70
UMHSL			Shore A50
UMHAH	Aluminum Alloy	Urethane	Shore A90
UMHA			Shore A70
UMHAL			Shore A50
			Shore A50

Urethane is baked on the outer circumference of the core material.



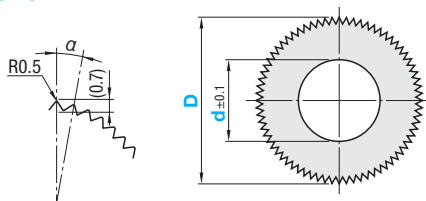
Part Number Type	No.	D	d	D1	D2	W	L	l	M	Unit Price					
										UMHSH	UMHS	UMHSL	UMHAH	UMHA	UMHAL
Stainless Steel	15	15	4	10	-	6	12	3	3						
	15-5		5												
	20	20	4	16	-	6	12	3	3						
	20-5		5												
	25	25	6	16	20	8	20	6	3						
25-8	8														
Aluminum	30	30	6	16	24	8	20	6	3						
	30-8		8												
	35	35	8	20	28	10	25	7.5	4						
	35-10		10												
	40	40	8	25	36	10	25	7.5	4						
	40-10		10												
	50	50	10	30	42	10	25	7.5	4						
	50-12		12												



ULCV

6.3/√

ex Example



Material: Polyurethane (Natural Color)
Hardness: Shore A50

Part Number Type	D	L Selection		d Selection			α°	Number of Teeth	Unit Price			
		6	10	8	10	15			L6	L10	L15	L20
ULCV (Shore A50)	15	6	10	8			12	30				
	20		10	15	8	10	9	40				
	25		10	15	20	8	10	15	7.2	50		
	30		10	15	20	8	10	15	6	60		

Ordering Example Part Number - L - d
UMHS15 ULCV20 - 10 - 8