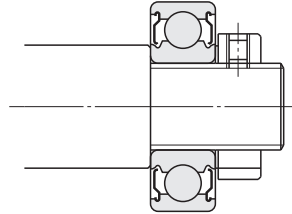
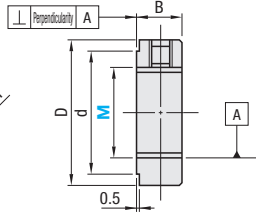
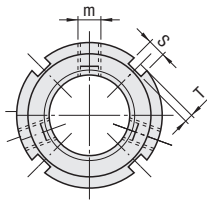


Precision Lock Nuts / Hook Spanners for Bearing Nuts

Precision Lock Nuts



Type	Perpendicularity
PLNY (Standard)	\perp 0.005 A
PLN (High-Grade)	\perp 0.002 A

Component	Material	Hardness	Surface Treatment
Main Body	SCM440	28-32HRC	Black Oxide
Set Screw	SCM435	35-40HRC	-
Locking Metal (*)	Phosphor Bronze	-	-

Screw Accuracy
ISO Class 4H

* Locking metal is the metal at the tip portion of set screw.

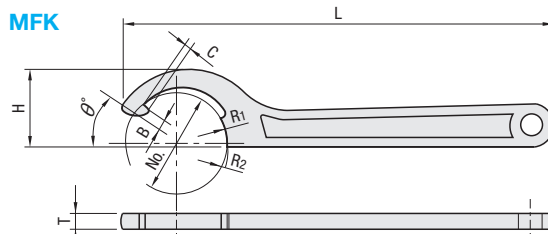
Part Number Type	M	MxPitch (Fine)	D	d	B	S	T	m	Perpendicularity of End Face (Max.)	Max. Tightening Torque (N·m) Set Screw	Unit Price		
											PLNY	PLN	
(Standard) PLNY	8	8x0.75	16	11	8	3	2	2xM4	-PLNY 0.005	3.5			
	10	10x1.0	18	13									
	12	12x1.0	20	16									
	15	15x1.0	25	21									
	17	17x1.0	28	23									
	20	20x1.0	32	27									
	(High-Grade) PLN	25	25x1.5	38	33	10	4	3xM5		-PLN 0.002	8.0		
		30	30x1.5	45	40								
		35	35x1.5	52	47								
		40	40x1.5	58	52								
		45	45x1.5	65	59								
		50	50x1.5	70	64								
	55	55x2.0	75	68	14	6	2.5	3xM6	18.0				
	60	60x2.0	80	73						16	7	3	3xM8



Ordering
Example

Part Number
PLNY8

Hook Spanners for Bearing Nuts



Material: Chrome Vanadium Steel

Surface Treatment: Cathodic Electrodeposition Paint

* For No. 30 or smaller sizes, there are no tabs on R1 part.

Part Number Type	No.	R1	R2	B	C	θ	T	H	L	Shaft Dia.	Round Nut / Bearing Nut	Unit Price 1 ~ 9 pc(s).	Volume Discount Rate 10 ~ 50 pcs.
20	10	11											
25	12.5	14	Ø20, Ø22	M12									
30	15	16			2	2.3	5	20	136	Ø30, Ø32	M20		
34	17	19											
45	22.5	24	2.5	2.5								6	28
52	26	27.5											
58	29	32.5			3	3	7	36	196	Ø45, Ø48	M30		
65	32.5	35											
70	35	37.5	3.5	3.5								6.5	41
					8.5	46	232	Ø58, Ø65	M40, M45				
			Ø65, Ø70	M45, M50									
								52	247	Ø70, Ø75	M50, M55		

* For orders larger than indicated quantity, please request a quotation.



Ordering
Example

Part Number
MFK25



Example

- Use a wrench matching the diameter of the nut.
- Do not hit the stem with a hammer, etc.
- Do not insert a pipe when using.

