

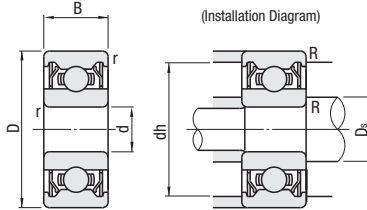
Heat-Resistant Grease Filled Ball Bearings - Max. Operating Temperature 230°C / With Set Screws

■ Heat-Resistant Grease Filled Ball Bearings - Max Operating Temperature 230°C



RoHS10

KB6□□□ZZ



Bearing Accuracy: JIS B 1514 Class 0
Operating Temperature: -20 ~ +230°C

Type	Inner and Outer Ring		Shield	Rolling Element	Retainer
	M Material	H Hardness	M Material	M Material	M Material
KB ZZ	SUS440C	57-63HRC	SUS304	SUS440C	SUS304


Part Number	d	D	B	r (min)	Basic Load Rating			Relative Dimensions				Mass (g) (Reference)	Unit Price
					Cr (Dynamic) kN	Cor (Static) kN	Allowable Rotational Speed rpm (Reference)	Ds (min)	Ds (max)	dh (max)	R (max)		
KB6900ZZ	10	22	6	0.3	2.29	1.01	3100	12	12.5	20	0.3	10	
KB6000ZZ		26	8		3.90	1.57	2700	13	24	19			
KB6200ZZ		30	9		4.35	1.91	2500	16	26	32			
KB6901ZZ	12	24	6	0.3	2.45	1.16	2700	14	14.5	22	0.3	11	
KB6001ZZ		28	8		4.35	1.89	2500	15	26	22			
KB6201ZZ		32	10		5.80	2.44	2200	16	28	37			
KB6902ZZ	15	28	7	0.3	3.70	1.80	2300	17	17	26	0.3	17	
KB6002ZZ		32	9		4.75	2.26	2100	19	30	30			
KB6202ZZ		35	11		6.50	3.00	2000	20	31	45			
KB6903ZZ	17	30	7	0.3	3.90	2.04	2100	19	19.5	28	0.3	18	
KB6003ZZ		35	10		5.10	2.60	1900	21	33	39			
KB6203ZZ		40	12		8.15	3.84	1700	21	36	65			
KB6904ZZ	20	37	9	0.3	5.40	2.96		22	24	35	0.3	36	
KB6004ZZ		42	12		7.95	4.00	1600	24	38	69			
KB6204ZZ		47	14		10.90	5.28	1400	25	42	106			
KB6905ZZ	25	42	9	0.3	5.95	3.60		27	28.5	40	0.3	38	
KB6005ZZ		47	12		8.55	4.65	1300	29	43	74			
KB6205ZZ		52	15		11.9	6.30	1200	30	47	120			
KB6906ZZ	30	47	9	0.3	6.15	4.00		32	34	45	0.3	50	
KB6006ZZ		55	13		11.3	6.60	1100	35	50	107			
KB6206ZZ		62	16		16.5	9.05	1000	35	57	184			

For details on the tolerance and allowable values of inner and outer rings, see P2243

Grease Performance	Grease Performance and Operating Environment		
	All-Purpose Grease Filled	Heat-Resistant Grease Filled	
Grease Performance	Thickener	Lithium Soap	PTFE
	Base Oil	Mineral Oil	Fluorinated Oil
	Base Oil Dynamic Viscosity (40°C, mm ² /s)	26	420
	Worked Penetration	270	280
	Dropping Point (°C)	170-190	260
	Evaporation (wt%)	0.32 (99°Cx22h)	0.1 (99°Cx22h)
	Separation (100°Cx24h, wt%)	2.9	4.5
Operating Temperature (°C)	In Air	-25~+120	-20~+230
	In Vacuum	Unsuitable	Unsuitable

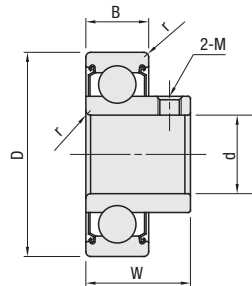
kgf=Nx0.101972

■ Bearings with Set Screws



RoHS10

TB6□□□ZZ



■ Features

- Set screw fastens the inner race to the shaft, eliminating the need for a bearing nut.

Bearing Accuracy: JIS B 1514 Class 0
* Except I.D.
Operating Temperature: -25 ~ +120°C

Type	M Material		
	Inner / Outer Rings, Rolling Element	Retainer / Shield	Set Screw
TB ZZ	SUS440C	SUS304	SUS304 Equivalent

For details on the tolerance and allowable values of outer rings, see P2243

Part Number	d	Tolerance	D	W	B	M (Coarse)	r (min)	Allowable Rotational Speed rpm (Reference)	Basic Load Rating		Mass (g) (Reference)	Unit Price		
									Cr (Dynamic) kN	Cor (Static) kN				
TB6900ZZ	10	+0.015 0	22	13	6	M3	0.3	9100	2.70	1.27	13			
TB6000ZZ			26	15	8				4.55	1.96	24			
TB6200ZZ			30	17	9				M4	0.6	6800	5.10	2.39	41
TB6901ZZ	12	+0.015 0	24	13	6	M3	0.3	7800	2.89	1.46	15			
TB6001ZZ			28	15	8				5.10	2.39	27			
TB6201ZZ			32	19	10				M4	0.6	7500	6.80	3.05	47
TB6902ZZ	15	+0.015 0	28	14	7	M3	0.3	6500	4.30	2.25	22			
TB6002ZZ			32	16.5	9				4.50	2.84	40			
TB6202ZZ			35	20	11				M4	0.6	10000	7.65	3.75	59
TB6904ZZ	20	+0.018 0	37	18	9	M4	0.3	9100	6.40	3.70	51			
TB6004ZZ			42	21	12				0.6	7500	9.40	5.05	87	
TB6204ZZ			47	23	14				M5	1.0	5800	12.80	6.65	132

kgf=Nx0.101972

Ordering Example

Part Number
KB6003ZZ
TB6201ZZ