

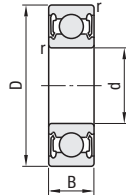
Small Dia. Ball Bearings / Stainless Steel Deep Groove Ball Bearings

Non-Contact, Contact Sealed Contact Sealed

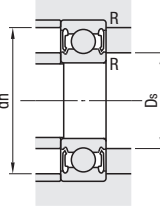


Non-Contact Sealed

B6□□VV

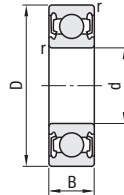


(Installation Diagram)

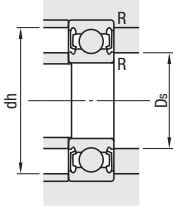


Contact Sealed

B6□□DDU



(Installation Diagram)



For features of Rubber Seal, see **P.1001** **M** Material: SUJ2 *The material of seal is NBR (Nitrile Rubber). Bearing Accuracy: JIS B 1514 Class 0

For details on the tolerance and allowable values of inner and outer rings, **P2243**

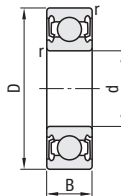
Part Number		d	D	B	r (min)	Basic Load Rating		Allowable Rotational Speed rpm (Reference)	Relative Dimensions			Mass (g) (Reference)	Unit Price	
Non-Contact Sealed	Contact Sealed					Cr (Dynamic) N	Co (Static) N		Ds (min)	dh (max)	R (max)		Non-Contact Sealed	Contact Sealed
-	B693DDU	3	8	4	0.15	560	179	30000	4.20	6.8	0.15	0.83	-	-
-	B623DDU		10			630	210	25000		8.8		1.66	-	-
-	B694DDU		11			960	345	24000		9.8		1.75	-	-
-	B604DDU	4	12	5	0.2	957	345	24000	5.60	10.4	0.20	2.29	-	-
B624VV	B624DDU		13			1300	485	20000		11.4		3.04	-	-
-	B695DDU	5	10	4	0.2	1080	430	40000	6.60	11.4	0.30	2.5	-	-
-	B605DDU		14			1330	505	38000		12.4		3.48	-	-
B625VV	B625DDU		16			1730	670	32000		14.0		4.86	-	-
B696VV	B696DDU	6	15	6	0.2	1350	530	36000	7.60	13.4	0.20	3.72	-	-
-	B606DDU		17			2260	835	34000		15.0		6.08	-	-
B626VV	B626DDU	8	19	7	0.3	2340	885	30000	8.00	17.0	0.30	7.94	-	-
B698VV	B698DDU		19			1990	865	30000		17.0		7.18	-	-
B608VV	B608DDU		22			3530	1400	17000		20.0		12	-	-
B628VV	B628DDU	24	4000	1590	14000	10.00	22.0	17	-	-	-			

kgf=Nx0.101972

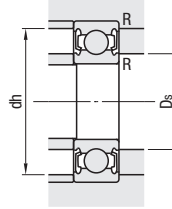


Contact Sealed

SB6□□□DDU



(Installation Diagram)



For features of Rubber Seal, see **P.1001** **M** Material: SUS440C Equivalent *The material of seal is NBR (Nitrile Rubber). Bearing Accuracy: JIS B 1514 Class 0

For details on the tolerance and allowable values of inner and outer rings, **P2243**

Part Number	d	D	B	r (min)	Basic Load Rating		Allowable Rotational Speed rpm (Reference)	Relative Dimensions			Mass (g) (Reference)	Unit Price
					Cr (Dynamic) kN	Co (Static) kN		Ds (min)	dh (max)	R (max)		
SB6000DDU	10	26	8	0.3	3.9	1.58	22000	12	13	24	0.3	18
SB6200DDU		30	9	0.6	4.35	1.91	18000	14	16	26	0.6	32
SB6001DDU	12	28	8	0.3	4.35	1.89	18000	15	15.5	26	0.3	22
SB6201DDU		32	10	0.6	5.8	2.44	17000	16	17	28	0.6	37
SB6002DDU	15	32	9	0.3	4.75	2.27	15000	17	19	30	0.3	31
SB6202DDU		35	11	0.6	6.5	2.98	14000	19	20.5	31	0.6	45
SB6003DDU	17	35	10	0.3	5.1	2.6	13000	19	21.5	33	0.3	41
SB6203DDU		40	12	0.6	8.15	3.85	12000	21	23.5	36	0.6	67
SB6004DDU	20	42	12	0.6	7.95	4	11000	24	25.5	38	0.6	68
SB6204DDU		47	14	1	10.9	5.25	11000	25	26.5	42	1	107
SB6005DDU	25	42	12	0.6	8.55	4.65	9500	29	30	43	0.6	79
SB6205DDU		52	15	1	11.9	6.3	9000	30	32	47	1	129
SB6006DDU	30	55	13	1	11.3	6.6	8000	35	36.5	50	1	116
SB6206DDU		62	16		16.5	9.05	7500	35	38.5	57	1	199
SB6007DDU	35	52	14	1	13.6	8.2	6700	40	41.5	57	1	151
SB6207DDU		72	17		1.1	21.8	12.2	6300	41.5	44.5	65.5	1
SB6008DDU	40	68	15	1	14.2	9.25	6000	45	47.5	63	1	190
SB6208DDU		80	18		1.1	24.8	14.3	5600	46.5	50.5	73.5	1

kgf=Nx0.101972

