

# Deep Groove Ball Bearings

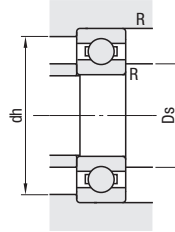
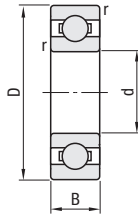
Open

B6



RoHS 10

Shipped with no grease applied. Please apply grease before use.



Material: SUJ2

Bearing Accuracy: JIS B 1514 Class 0

For details on the tolerance and allowable values of inner and outer rings, see P2243

Part Number	d	D	B	r (min)	Basic Load Rating			Relative Dimensions				Mass (g) (Reference)	Unit Price
					Cr (Dynamic) kN	Cor (Static) kN	rpm (Reference)	Ds		dh (max)	R (max)		
								(min)	(max)				
B6700	10	15	3	0.2	0.85	0.43	15000	10.4	11.21	14.2	0.2	2	
B6800		19	5	0.3	1.83	0.925	34000	12	12.5	17	0.3	5	
B6900		22	6		2.70	1.27	32000					13	20
B6000		26	8	4.55	1.96	30000	12	13.5	24	19			
B6200	30	9	0.6	5.10	2.39	24000	14	16	26	0.6	32		
B6701	18	4	0.2	0.92	0.53	13000	12.4	13.86	16.7	0.2	3		
B6801	12	21	5	0.3	1.92	1.04	32000	14	14.5	19	0.3	6	
B6901		24	6		2.89	1.46	30000					15	22
B6001		28	8	5.10	2.39	28000	16	16	26	21			
B6201		32	10	0.6	6.10	2.75	22000	16	17	28	0.6	37	
B6702	21	4	0.2	0.93	0.58	11000	15.4	16.86	19.7	0.2	4		
B6802	15	24	5	0.3	2.08	1.26	28000	17	17.5	22	0.3	7	
B6902		28	7		3.65	2.00	26000					18.5	26
B6002		32	9	5.60	2.83	24000	19	19	30	30			
B6202		35	11	0.6	7.75	3.60	20000	20	20	31	0.6	45	
B6803	17	26	5	0.3	2.23	1.46	26000	19	19.5	24	0.3	8	
B6903		30	7		4.65	2.58	24000					20	20
B6003		35	10	0.3	6.80	3.35	22000	21	21	33	0.3	39	
B6203		40	12	0.6	9.60	4.60	17000	21	23	36	0.6	66	
B6704	20	27	4	0.2	1.40	0.72	8500	20.4	22.36	25.5	0.2	6	
B6804		32	7	0.3	4.00	2.47	22000	22	22.5	30	0.3	19	
B6904		37	9		6.40	3.70	19000					24	24
B6004		42	12	0.6	9.40	5.05	18000	24	26	38	0.6	69	
B6204	47	14	1.0	12.80	6.65	15000	25	28	42	1.0	106		
B6805	25	37	7	0.3	4.30	2.95	18000	27	28	35	0.3	22	
B6905		42	9		7.05	4.55	16000					29	29
B6005		47	12	0.6	10.10	5.85	15000	29	30.5	43	0.6	80	
B6205		52	15	1.0	14.00	7.85	13000	30	32	47	1.0	128	
B6806	30	42	7	0.3	4.70	3.65	15000	32	33	40	0.3	26	
B6906		47	9		7.25	5.00	14000					34	34
B6006		55	13	1.0	13.20	8.30	13000	35	37	50	1.0	116	
B6206		62	16	1.0	19.50	11.30	11000	35	39	57	1.0	199	
B6807	35	47	7	0.3	4.90	4.05	14000	37	38	45	0.3	29	
B6907		55	10	0.6	9.55	6.85	12000	39	40	51	0.6	74	
B6007		62	14	1.0	16.00	10.30	11000	40	42	57	1.0	155	
B6207		72	17	1.1	25.70	15.30	9500	41.5	45	65.5	1.1	288	
B6808	40	52	7	0.3	5.10	4.40	12000	42	43	50	0.3	33	
B6908		62	12	0.6	12.20	8.90	11000	44	45	58	0.6	110	
B6008		68	15	1.0	16.80	11.50	10000	45	47	63	1.0	190	
B6208		80	18	1.1	29.10	17.80	8500	46.5	51	73.5	1.1	366	
B6010	50	16	1.0	21.80	16.60		55.0	57.5	75.0	1.0	261		
B6210		90	20	1.1	35.00	23.20	7100	56.5	60.0	83.5	1.1	454	

kgf=Nx0.101972



Ordering Example

Part Number  
B6200