

Bearings with Housings

T-Shaped Short Double Bearings

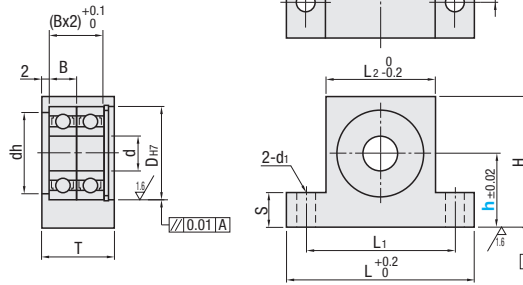
■ **Features:** Combining the 2 Bearings can save more space on the front and the back than the standard double type.



Type	M Material		S Surface Treatment	A Accessory Retaining Ring
	Bearing	Housing	Housing	
BGMWB	Steel	S45C Equivalent	Black Oxide	Spring Steel
BGMW			Electroless Nickel Plating	
BGMWS	Stainless Steel	SUS304 Equivalent	-	SUS304 Equivalent

Bearing Accuracy: JIS B 1514 Class 0

- ⦿ Easier to obtain required radial load ratings when space is limited.
- ⦿ * Bearings with Rubber Seals (VV and DD) are all made of steel.
- ⦿ The "(Bx2)" dimension for "T-Shaped Short Double Bearings" Type indicates the position where the retaining ring groove begins. Please note that considering the groove width tolerance and the retaining ring thickness tolerance, there may be up to max.0.3 of axial clearance on the bearings.



6.3 / (1/16)

Part Number		h Selection	d	DH7	Tolerance	dh	B	H	L	L1	L2	T	S	d1	Unit Price																
Type	Bearing No.														Seal	BGMWB	BGMW	BGMWS													
BGMWB	605	ZZ Double Shielded (x1.0)	15 20 25	5	14	+0.018 0	10	5	h+11	40	30	20	15	5	4.5			-													
	606		20 25 30	6	17	+0.021 0	13	6	h+13	47	35	23	18	10	5.5																
	608		20 30 40	8	22		18	7	h+15	53	41	29	19			15	6.5														
	6900			10	26		22	8	h+17	58	46	34	23					9													
	6000		*VV Non-Contact Sealed Rubber Seal (x1.1)	30 40 50	12		24	21	6	h+16	56	44	32						18	11	9										
	6901				15		32	28	9	h+20	68	54	40						24			11									
	6001		DD Contact Sealed Rubber Seal (x1.1)	40 50 60	17		30	27	7	h+19	64	52	38						20				11	9							
	6902				17		35	31	10	h+22	70	56	43						26						11						
	6002		40 50 60	20	37		34	9	h+23	73	59	45	24						11							9					
	6903			20	42		36	12	h+25	82	66	50	11																		
	6003		40 50 80	25	47		41	12	h+28	96	76	56															11	9			
	6904			30	55		48	13	h+32	104	84	64																	32	20	11
6005																															
6006																															

⦿ The price of sealed VV and DD are the price shown in the table multiplied by 1.1.

⦿ Check for available sizes in the price list.

⦿ For details of Bearing Standards, see P.989, 991, 993-996, 1003 and 1004.

⦿ * No. 605 and 606 are not available for VV (Non-contact Sealed).



Ordering Example

Part Number			-	h
Type	Bearing	Seal		
BGMW	6000	ZZ	-	30



Alterations

Part Number	-	h	-	(KCC, KCC, NA)
BGMW6000VV	-	30	-	NA

Alterations	Bearings, Retaining Rings Not Assembled	C2 Chamfer	C Chamfer
Code	NA	KCC	KCC
Spec.	Bearings and retaining rings are shipped unassembled to the housing.	C2 chamfer is done on the top edge surface.	C chamfer (45°) is done on both top edge corners. Ordering Code: KCC