

Bearings with Housings

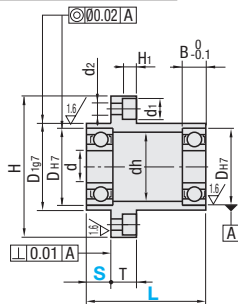
Double Bearings with Pilot, Non-Retained, L Configurable



Type			Material		Surface Treatment	
Round	Square	Compact	Bearing	Housing	Housing	
BGFRYB	BGFSYB	BGFCYB	Steel	S45C Equivalent	Black Oxide	
BGFRY	BGFSY	BGFCY		2000series Aluminum Alloy	Electroless Nickel Plating	
BAFRY	BAFSY	BAFCY			Clear Anodize	
SBGFRY	-	-	*Stainless Steel	SUS304		

* Bearings with Rubber Seals (VV and DD) are all made of steel.

6.3 / (1.5 /)



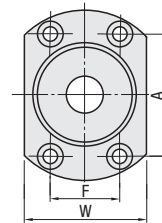
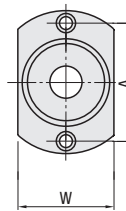
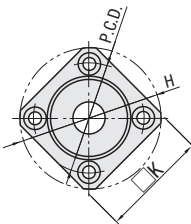
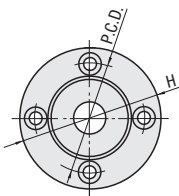
Round

Square

Compact

d3-17

d20-50



Bearing Accuracy: JIS B 1514 Class 0

Type	Part Number	Seal	1mm Increment		d	DH7	Tolerance	B	H	W	T	dh	D197	Tolerance	P.C.D.	K	A	F	d1	d2	H1		
			L	S																			
(Round)	623	ZZ Double Shielded	20-40	5-28	3	10	+0.015	4	33	16	7	7	14	-0.006	24	27	24	8	4.5	4.1	3.1		
	624		20-40	5-28	4	13	+0.018	5	35	18	7	9	17	-0.024	26	28	26						
	605		20-40	5-27	5	14		5	38	20		10	18	28	30	28							
	625		30-40	10-22	5	16	5	40	22	12	20	30	31	30	-0.007	31	32					31	
	606		20-40	5-27	6	17	6	41	23	13	21	31	32	31		-0.028	34					34	34
	626		30-50	10-32	6	19	+0.021	6	44	25	15	24	34	34	34		-0.007					26	28
	678		20-40	5-27	12	+0.018	3.5	35	18	10	16	26	28	26	34	34		34					
	698		25-50	5-37	8	19	+0.021	6	44	25	15	24	37	36	37	-0.007	40	37	40	8	4.5	4.1	
	608		20-50	5-37	22	0	7	47	29	18	27	37	36	37									
	628		30-50	10-32	24	0	8	50	32	20	30	40	37	40	-0.028	30	31	30					
	6700		20-40	5-27	15	+0.018	4	40	22	12	19	30	31	30		34	34	34					
	6800		20-40	5-27	19	0	5	44	25	15	24	34	34	34	-0.009	42	39	42	8	4.5	4.1		
	6900		20-60	5-47	22	+0.021	6	47	29	19	27	37	36	37									
	6000		30-60	10-42	26	0	8	52	34	22	32	42	39	42	-0.034	46	42	46					
	6200		40-60	15-37	30	0	9	56	38	24	36	46	42	46		-0.007	34	34	34				
	6701		20-40	5-27	18	+0.018	4	44	25	15	23	34	34	34	-0.028		37	36	37	8	4.5	4.1	
	6801		25-50	5-37	21	0	5	47	29	17	26	37	36	37									
	6901		30-60	10-42	12	+0.021	6	50	31	21	30	40	38	40	-0.009	44	40	44					
6001	30-60	10-42	28	0	8	54	36	24	34	44	40	44	-0.034	48		43	48						
6201	40-70	15-47	32	+0.025	10	58	40	26	38	48	43	48		-0.007	47	45	47	9.5	5.5	5.1			
6702	25-60	10-42	21	+0.021	4	47	29	18	26	37	36	37											
6802	25-60	10-42	24	0	5	50	32	20	30	40	37	40	-0.028	40	37	40							
6902	30-70	10-50	15	+0.021	7	59	37	25	35	45	45	47		-0.009	50	46	50						
(Square)	6002	Non-Contact Sealed Rubber Seal	40-70	15-45	32	+0.025	9	62	40	28	38	50	46		50	-0.009	54	49	54	8	4.5	4.1	
	6202	40-70	15-45	35	0	11	66	44	29	42	54	49	54										
	6803	*2DD Contact Sealed Rubber Seal	25-60	10-40	26	+0.021	5	52	34	22	32	42	39	42	-0.034	48	46	48					
6903	40-70	15-45	30	0	7	60	38	10	27	36	48	46	48	-0.009		54	50	54	9.5	5.5	5.1		
6003	40-70	15-45	35	+0.025	10	66	44	31	42	54	50	54	-0.034		60	54	60						
(Compact)	6203	50-70	20-40	40	0	12	72	50	34	48	64	54		60	-0.010	47	45	41	23	8	4.5	4.1	
	6704	30-70	10-50	27	+0.021	4	59	35	23	33	47	45	41	-0.040		72	67	63	36				9.5
	6804	35-70	10-50	32	0	7	62	40	28	38	50	46	44		24	-0.009	59	54	54	24	11	6.6	
	6904	45-70	15-44	37	+0.025	9	72	47	34	45	64	59	54	24	-0.034		64	59	55	32			14
	6004	55-80	20-49	42	0	12	77	54	36	50	72	67	63	36		-0.010	72	67	62	36	11	6.6	
	6204	55-80	20-47	47	0	14	81	58	11	40	54	68	62	59	34		-0.040	68	62	59			34
	6805	35-70	15-44	37	+0.030	7	72	47	34	45	64	59	54	24	-0.034	72		67	62	36	11	6.6	6.1
	6905	35-70	15-44	42	0	9	77	54	11	36	50	64	59	56		32	-0.010	74	67	62			
	6005	55-80	20-47	47	+0.030	12	88	58	13	41	54	68	62	59	34	-0.040		68	62	59	34	11	6.6
	6205	55-80	20-47	52	0	15	94	64	13	45	60	78	72	68	39		-0.010	82	79	77	44		
	6806	35-70	15-42	42	+0.025	7	77	54	11	36	50	64	59	56	32	-0.040		72	67	62	36	11	6.6
	6906	35-70	15-42	47	0	9	88	58	11	41	54	68	62	59	34		-0.010	74	67	62	36		
	6006	55-80	20-47	55	+0.030	13	96	66	13	48	62	80	73	70	40	-0.040		88	79	77	44	14	9
	6206	55-120	20-87	62	0	16	104	74	13	55	70	88	79	77	44		-0.012	105	95	92	51		
	6007	55-120	20-87	62	+0.030	14	104	74	13	60	78	96	86	80	54	-0.040		113	102	98	56	14	9
6207	55-120	20-87	72	0	17	126	88	20	64	84	105	95	92	51	-0.012		113	-	98	56	17.5		
6008	65-120	25-82	68	0	15	114	82	13	60	78	96	86	80	54		-0.047	113	-	98	56		17.5	11
6208	65-120	25-82	80	+0.035	18	134	96	13	74	92	113	102	98	56	-0.012		113	-	98	56	17.5		
6010	65-120	25-82	80	0	16	134	96	20	74	92	113	102	98	56		-0.047	126	-	104	72		17.5	11
6210	70-120	25-82	90	+0.035	20	147	110	20	83	106	126	-	104	72	-0.047		126	-	104	72	17.5		

Check for available sizes in the price list.

*1 No. 623, 624, 605, 606 and numbers starting with 67 are not available for VV (Non-contact Sealed).

*2 Bearings with Rubber Seals are all made of steel.