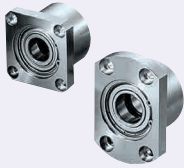


Bearings with Housings

Double Bearings, Retained, L Configurable



RoHS 10

Type			Material		Surface Treatment		Accessory
Round	Square	Compact	Bearing	Housing	Bearing	Housing	Retaining Ring
BGFRBB	BGFSBB	BGFCBB	Steel	S45C	Black Oxide		Spring Steel
BGFRB	BGFSB	BGFCB		Equivalent	Electroless Nickel Plating		
BAFRB	-	BAFCB	* Stainless Steel	2000series Aluminum Alloy	Clear Anodize		SUS304
SBAFRB	-	SBAFCB		SUS304	-		
SBGFRB	SBGFSB	SBGFCB		SUS304	-		

* Bearings with Rubber Seals (VV and DD) are all made of steel.

Round

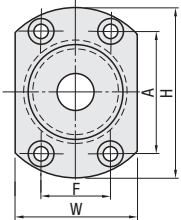
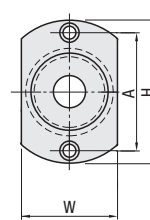
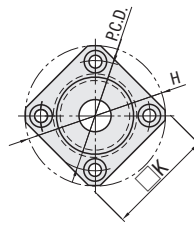
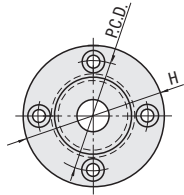
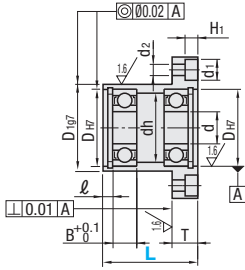
Square

Compact

d3~17

d20~50

6.3 / (1.6 /)



Bearing Accuracy: JIS B 1514 Class 0

Part Number			L 1mm Increment	d	DH7	Tolerance	B	ℓ	H	W	T	dh	D197	Tolerance	P.C.D.	K	A	F	d1	d2	H1
Type	Bearing No.	Seal																			
(Round)	BGFRBB	623	20~40	3	10	+0.015	4	2.65	33	16	7	7	14	-0.006 -0.024	24	27	24		6.5	3.5	3.1
	BGFRBB	624		4	13	+0.018	5	2.65	35	18		9	17		26	28	26				
	BGFRBB	605		5	14		5	2.65	36	20		10	18		28	31	28				
	BGFRBB	625		6	16	5	2.65	38	22	12		20	28		31	28					
	BGFRBB	606	25~50	6	17	+0.021	6	2.65	39	23	8	13	21	-0.007 -0.028	29	32	29		8	4.5	4.1
	BGFRBB	626		6	19		6	2.65	41	25		15	24		31	34	31				
	BGFRBB	698	25~50	8	19	+0.025	6	2.65	41	25	10	15	24	-0.009 -0.034	31	34	31		9.5	5.5	5.1
	BGFRBB	608		8	22		7	2.65	45	29		18	27		35	36	35				
	BGFRBB	628	20~40	10	24	+0.021	8	2.85	47	32	8	20	30	-0.009 -0.034	37	37	37		8	4.5	4.1
	BGFRBB	6800		10	26		6	2.65	45	29		19	27		35	36	35				
	BGFRBB	6900	25~60	10	26	+0.021	8	2.85	50	34	8	19	27	-0.009 -0.034	40	39	40		8	4.5	4.1
	BGFRBB	6000		10	26		9	2.85	54	38		24	36		44	42	44				
	BGFRBB	6200	25~50	12	21	+0.025	5	2.85	44	29	10	17	26	-0.007 -0.028	34	35	34		9.5	5.5	5.1
	BGFRBB	6901		12	24		6	2.85	48	31		21	30		38	38	38				
	BGFRBB	6001	25~60	12	28	+0.021	8	2.85	52	36	10	24	34	-0.009 -0.034	42	40	42		9.5	5.5	5.1
	BGFRBB	6201		12	32		10	2.85	56	40		26	38		46	43	46				
	BGFRBB	6802	30~70	15	24	+0.021	5	2.85	47	32	10	20	30	-0.009 -0.034	37	37	37		9.5	5.5	5.1
	BGFRBB	6902		15	28		7	2.85	57	37		25	35		45	45	45				
	BGFRBB	6002	30~70	15	32	+0.025	9	2.85	60	40	10	28	38	-0.009 -0.034	48	46	48		9.5	5.5	5.1
	BGFRBB	6202		15	35		11	3.75	64	44		29	42		52	49	52				
BGFRBB	6903	35~70	17	30	+0.021	7	2.85	60	38	10	27	36	-0.009 -0.034	48	46	48		9.5	5.5	5.1	
BGFRBB	6003		17	35		10	3.75	66	44		31	42		54	50	54					
BGFRBB	6203	35~70	17	40	+0.025	12	3.95	72	50	10	34	48	-0.009 -0.034	60	54	60		9.5	5.5	5.1	
BGFRBB	6804		17	32		7	3.75	60	40		28	38		48	46	48					
BGFRBB	6904	45~80	20	37	+0.025	9	3.75	69	47	11	34	45	-0.010 -0.040	56	54	51		11	6.6	6.1	
BGFRBB	6004		20	42		12	3.95	77	54		36	50		64	59	56					32
BGFRBB	6204	35~70	25	47	+0.030	14	3.95	81	58	11	40	54	-0.010 -0.040	68	62	59		11	6.6	6.1	
BGFRBB	6805		25	37		7	3.75	69	47		34	45		56	54	51					
BGFRBB	6905	45~80	25	42	+0.025	9	3.95	77	54	11	36	50	-0.010 -0.040	64	59	56		14	9	8.1	
BGFRBB	6005		25	47		12	3.95	88	58		41	54		72	67	63					36
BGFRBB	6205	35~70	30	52	+0.030	15	4.2	94	64	13	45	60	-0.010 -0.040	78	72	68		14	9	8.1	
BGFRBB	6806		30	42		7	3.95	77	54		36	50		64	59	56					32
BGFRBB	6906	45~80	30	47	+0.025	9	3.95	88	58	13	41	54	-0.010 -0.040	72	67	63		14	9	8.1	
BGFRBB	6006		30	55		13	4.2	96	66		48	62		80	73	70					40
BGFRBB	6206	50~120	35	62	+0.030	16	4.2	104	74	13	55	70	-0.010 -0.040	88	79	77		14	9	8.1	
BGFRBB	6007		35	62		14	4.2	104	74		55	70		88	79	75					44
BGFRBB	6207	55~120	35	72	+0.030	17	6	126	88	20	64	84	-0.012 -0.047	105	95	92		17.5	11	11	
BGFRBB	6008		35	68		15	5.2	114	82		60	78		96	86	80					54
BGFRBB	6208	50~120	40	80	+0.035	18	6	134	96	20	74	92	-0.012 -0.047	113	102	98		17.5	11	11	
BGFRBB	6010		40	80		16	6	134	96		74	92		113	-	98					56
BGFRBB	6210	70~120	50	90	+0.035	20	7	147	110	20	83	106	-0.012 -0.047	126	-	104	72				

Check for available sizes in the price list.

*1 No. 623, 624, 605 and 606 are not available for VV (Non-contact Sealed).

*2 Bearings with Rubber Seals are all made of steel.