

# Bearings with Housings

## Pilot, Retained

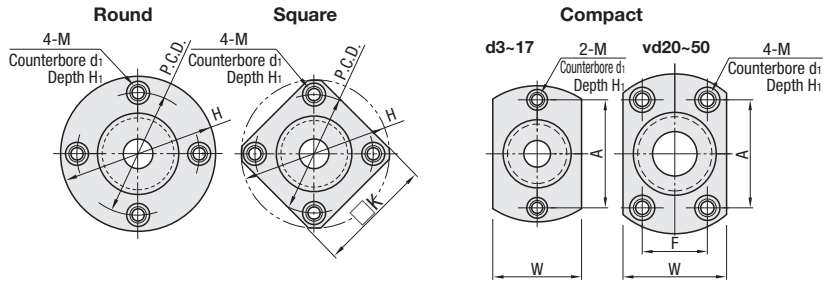
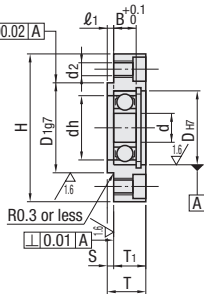


Type			Material		Surface Treatment		Accessory
Round	Square	Compact	Bearing	Housing	Bearing	Housing	Retaining Ring
BGRRB	BGSRB	BGCRB	Steel	S45C Equivalent	Black Oxide		Spring Steel
BGRR	BGSR	BGCR		2000series Aluminum Alloy SUS304	Electroless Nickel Plating		SUS304
BARR	BASR	BACR			Clear Anodize		SUS304
SBARR	SBASR	SBACR	* Stainless Steel	SUS304	-		-
SBGRR	SBGSR	SBGCR			-		-

\* Bearings with Rubber Seals (VV and DD) are all made of steel.

Bearing Accuracy: JIS B 1514 Class 0

6.3 / (1.6 /)



\* Mounting holes are tapped and counterbored so the housing can be mounted from either side.

Part Number			d	DH7	Tolerance	B	H	W	T	T1	S	ℓ1	dh	D197	Tolerance	P.C.D.	K	A	F	M (Coarse) (d2)	d1	H1	
Type	Bearing No.	Seal																					
(Round)	BGRRB	623	3	10	+0.015	4	33	16	9	7			7	14		24	27	24		M4 (3.3)	6.5	3.4	
	BGRR	624	4	13		5	35	18	10	8			9	17	-0.006	26	28	26					
	BGRR	605	5	14	+0.018	5	36	20	10	8			10	18	-0.024	26	30	26					
	BGRR	625	16	16	0	5	38	22	10	8			12	20		28	31	28					
	BGRR	606	6	17		6	39	23	11	9			13	21		29	32	29					
	BGRR	626	6	19		6	41	25	11	9			15	24		31	34	31					
	BGRR	698	19	19		6	41	25	11	9			15	24	-0.007	31	34	31					
	BGRR	608	8	22		7	45	29	12	10			18	27	-0.028	35	36	35					
	BGRR	628	24	24		8	47	32	13	11			20	30		37	37	37					
	BGRR	6800	19	19		5	41	25	10	8			15	24		31	34	31			M5 (4.3)	8	4.4
	BGRR	6900	22	22	+0.021	6	45	29	11	9			19	27		35	36	35					
	BGRR	6000	26	26	0	8	50	34	13	11			22	32	-0.009	40	39	40					
BGRR	6200	30	30		9	54	38	14	12			24	36	-0.034	44	42	44						
BGRR	6801	21	21		5	44	29	10	8			17	26	-0.007	34	35	34						
BGRR	6901	24	24		6	48	31	11	9			21	30	-0.028	38	38	38						
BGRR	6001	28	28		8	52	36	13	11			24	34	-0.009	42	40	42						
BGRR	6201	32	32	+0.025	10	56	40	15	13			26	38	-0.034	46	43	46						
BGRR	6802	24	24	0	5	47	32	10	8			20	30	-0.034	37	37	37						
BGRR	6902	28	28	+0.021	7	57	37	12	10		2	2	25	35		45	45	45					
BGRR	6002	32	32	+0.025	9	60	40	14	12			28	38		48	46	48						
BGRR	6202	35	35	0	11	64	44	17	15			29	42		52	49	52			M6 (5.2)	9.5	5.4	
BGRR	6903	30	30	+0.021	7	60	38	12	10			27	36	-0.009	48	46	48						
BGRR	6003	17	35		10	66	44	16	14			31	42	-0.034	54	50	54						
BGRR	6203	40	40		12	72	50	18	16			34	48		60	54	60						
BGRR	6804	32	32		7	60	40	12	10			28	38		48	46	38	29					
BGRR	6904	37	37		9	69	47	15	13			34	45		56	54	51	24					
BGRR	6004	42	42	+0.025	12	77	54	18	16			36	50		64	59	56	32			M8 (6.8)	11	6.5
BGRR	6204	47	47	0	14	81	58	20	18			40	54	-0.040	68	62	59	34					
BGRR	6805	37	37		7	69	47	13	11			34	45	-0.009	56	54	51	24					
BGRR	6905	42	42		9	77	54	15	13			36	50	-0.034	64	59	56	32					
BGRR	6005	47	47		12	88	58	18	16			41	54	-0.010	72	67	63	36			M10 (8.5)	14	8.6
BGRR	6205	52	52	+0.030	15	94	64	22	20			45	60	-0.040	78	72	68	39					
BGRR	6806	42	42	+0.025	7	77	54	13	11			36	50	-0.034	64	59	56	32			M8 (6.8)	11	6.5
BGRR	6906	47	47	0	9	88	58	15	13			41	54		72	67	63	36					
BGRR	6006	55	55		13	96	66	20	18			48	62	-0.010	80	73	70	40			M10 (8.5)	14	8.6
BGRR	6206	62	62		16	104	74	23	21			55	70	-0.040	88	79	77	44					
BGRR	6007	14	14																				
BGRR	6207	17	72	+0.030	17	126	88	26	23	3	3	64	84	-0.012	105	95	92	51			M12 (10.5)	17.5	11
BGRR	6008	68	68	0	15	114	82	23	21	2	2	60	78	-0.040	96	86	80	54			M10 (8.5)	14	8.6
BGRR	6208	18	18																				
BGRR	6010	16	80			134	96	27	24			74	92	-0.012	113	102	98	56			M12 (10.5)	17.5	11
BGRR	6210	90	90	+0.035	20	147	110	31	28	3	3	83	106	-0.047	126	-	104	72					

\* Check for available sizes in the price list.

\*1 No. 623, 624, 605 and 606 are not available for VV (Non-contact Sealed).

\*2 Bearings with Rubber Seals are all made of steel.