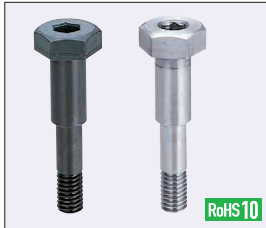
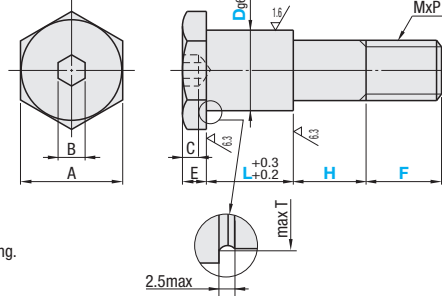


Fulcrum Pins

Low Head Stepped, With Lock Nut



Type		M Material	S Surface Treatment	H Hardness
Standard	Configurable	SCM435 Equivalent	Black Oxide	33-38HRC
CMSG	FCMSG	SUS304	-	-
SCMSG	FSCMSG	-	-	-



25 / (6.3 / 1.6)

D Tolerance	
6	-0.004 -0.012
8, 10	-0.005 -0.014
12-18	-0.006 -0.017
20	-0.007 -0.020

Hex heads A and B are not aligned.
Precaution for Use:
Tighten the external hex A for finishing.

Standard

Part Number	Type	Dg6	L Selection	H=0.1mm Increment	A	B	C	E	F	MxP (Coarse)	T	Unit Price	
												CMSG	SCMSG
CMSG	SCMSG	6	5 6 9 10 12	2.0- 50.0	10	3	2	5	7	4x0.7	6.5		
		8	5 6 9 10 12 16		13	5	3		9	6x1.0	8.7		
		10		17	6	4	12		8x1.25	10.8			
		12	10 12 16 19 22 25	3.0- 70.0	19	8	5	6	16	10x1.5	14		
		13											
15		4.0- 80.0	24	10	6	7	18	12x1.75	17				
16	16 19 22 25		27	7	8	19							
18			4.0-100.0	30	14	7	8	24	16x2.0	21			
20													

Configurable

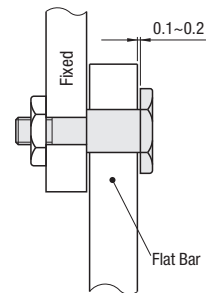
Part Number	Type	Dg6	L=1mm Increment	H=0.1mm Increment	F=1mm Increment	A	B	C	E	MxP (Coarse)	T	Unit Price	
												FCMSG	FSCMSG
FCMSG	FSCMSG	6	5-12	2.0- 50.0	4- 7	10	3	2	5	4x0.7	6.5		
		8	5-16		6- 9	13	5	3		6x1.0	8.7		
		10		8-12	17	6	4	8x1.25		10.8			
		12	10-25	10-16	19	8	5	6	10x1.5	14			
		13											
15	4.0- 80.0	12-18		24	10	6	7	12x1.75	17				
16				27	7	8	19						
18		4.0-100.0	16-24	30	14	7	8	16x2.0	21				
20													



Ordering Example
Part Number - L - H - F
CMSG15 - 16 - 20.5
FSCMSG12 - 13 - 8 - 10



Example



Alterations
Part Number - L - H - F - (HKC)
CMSG10 - 12 - 15.2 - HKC

Alterations	Code	Spec.										
	HKC	Dimension H will have an O.D. tolerance of g6. Dimension H Applicable Range <table border="1"> <thead> <tr> <th>D</th> <th>H</th> </tr> </thead> <tbody> <tr> <td>6, 8</td> <td>10- 50</td> </tr> <tr> <td>10, 12, 1, 3</td> <td>15- 70</td> </tr> <tr> <td>15, 16, 18</td> <td>20- 80</td> </tr> <tr> <td>20</td> <td>20-100</td> </tr> </tbody> </table>	D	H	6, 8	10- 50	10, 12, 1, 3	15- 70	15, 16, 18	20- 80	20	20-100
D	H											
6, 8	10- 50											
10, 12, 1, 3	15- 70											
15, 16, 18	20- 80											
20	20-100											