

Lead Screw Support Units - Round

Fixed Side Radial Bearing Type

When using Fixed Side Support Units combined with Support Side Support Units
 Support Unit Sets combined Fixed Side Support Unit with Support Side Support Unit are available for lower prices.
 Add -SET to part number of Fixed Side Support Units to select Support Unit Sets.



Listed Support Side Support Unit Sets are also available by adding -SET to part number of Fixed Side Support Units on P.794.

Support Unit Main Body

RoHS10

Stop Plate Set

RoHS10

Stop Plate Set for Digital Position Indicators Compact Mount

RoHS10

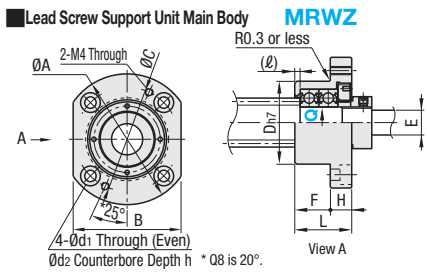
Stop Plate Set for Large Position Indicator Mount

RoHS10

Support Side Support Unit (MRWZ)

Available as Set by adding -SET to a part number of Fixed Side Support Unit
 RoHS10

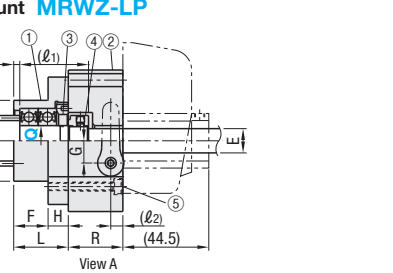
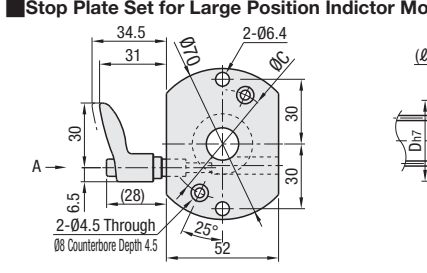
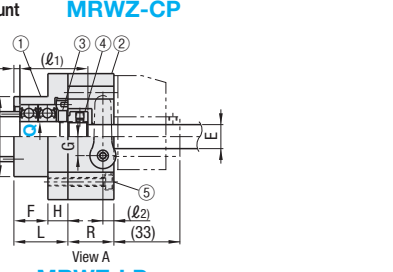
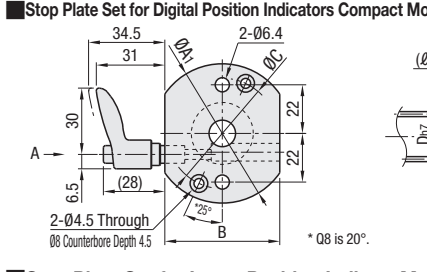
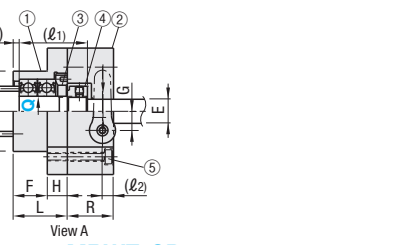
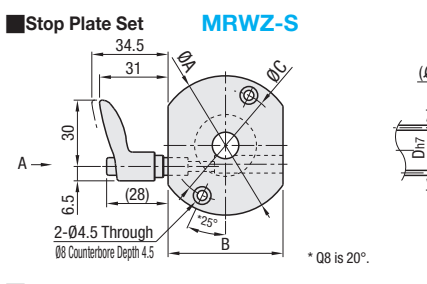
Support Unit Support Side Set	Type			
	Support Unit Main Body	Stop Plate Set	Stop Plate Set for Digital Position Indicators Compact Mount	Stop Plate Set for Large Position Indicator Mount
Not included	MRWZ	MRWZ-S	MRWZ-CP	MRWZ-LP
Included	MRWZ-SET	MRWZ-S-SET	MRWZ-CP-SET	MRWZ-LP-SET



Parts Details

Number	Part Name	MRWZ	-S/-CP/-LP	-SET	Material	Surface Treatment	
①	Fixed Side Support Unit	1	1	1	S45C	Black Oxide	
②	Collar	1	1	1	SS400		
③	Bearing Nut (w/ Thread Protector)	1	1	1	SS400		
④	Stop Plate Set	-	1	(1)	SS400		
⑤	Hex Socket Head Cap Screw	-	2	(2)	SCM435		
⑥	Support Side Support Unit	-	-	1	S45C		
⑦	Retaining Ring for Shaft	-	-	1	Spring Steel		* No treatment
⑧	Radial Bearing	-	-	1	SUJ2		No treatment

Two preload-adjusted bearings are integrated in a Fixed Side Support Unit.
 As one of the specifications for Support Side Support Unit, any bearing is not integrated in the main body when the product is shipped.
 Values in () are applicable only when support units are purchased in set.
 Only Q8 product are surface-treated with Trivalent Chromate.



Fixed Side Support Unit Accessory Dimensions

Q	Bearing Nut			Collar Dimensions		
	M Fine	Applicable Wrench Size	I.D.	O.D.	Thickness	
8	M8x1.0	14	8	11.5	5	
10	M10x1.0	17	10	14	5	
12	M12x1.0	19	12	15	5	
15	M15x1.0	22	15	20	6	

Do not use without inserting the screw shaft (empty tightening). It may deform, causing it to be unusable.
 A collar for the clamp lever is not included with Q8. The clamp lever mounting dimensions will be the same as the Large Type. The clamp lever cannot be mounted on the opposite side.

Part Number Type	Support Unit Support Side Set	L	H	F	D	A	A1	C	B	d1	d2	h	R	(l)	(l1)	(l2)	G	E	Bearing Nut	Clamp Lever	Bearing Type	Allowable Axial Load (N)
MRWZ	8	22	14	28	45	53	35	35	3.4	7	4	17		26			6.5	6	BNR8	CLDFC4-7-M	B608ZZ	1300
MRWZ-S	10	24	16	34	52	54	42	42	4.5	8	5	18	2.3	29			7.5	8	BNR10		B600ZZ	2300
MRWZ-CP	12	27	17	40	63	63	50	52	5.5	10	16	20		34			8.5	10	BNR12		B6001ZZ	2600
MRWZ-LP	15	27	17	40	63	63	50	52	5.5	10	16	20		34			9.5	12	BNR15		B600ZZ	2900

Ordering Example

Part Number	Support Unit Support Side Set	L	H	F	D	A	A1	C	B	d1	d2	h	R	(l)	(l1)	(l2)	G	E	Bearing Nut	Clamp Lever	Bearing Type	Allowable Axial Load (N)
MRWZ	15																					
MRWZ	12																					
MRWZ-S	12																					
MRWZ-CP	15																					

Support Side Support Unit Sets are available at 5 percent reduced price compared to Without Support Side Support Units.

Part Number Type	Support Unit Support Side Set	MRWZ	MRWZ-SET	MRWZ-S	MRWZ-S-SET	MRWZ-CP	MRWZ-CP-SET	MRWZ-LP	MRWZ-LP-SET
MRWZ	8								
MRWZ-S	10								
MRWZ-CP	12								
MRWZ-LP	15								