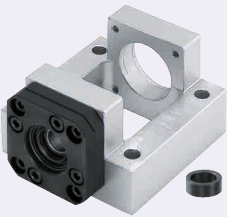


# Support Units - Fixed Side, Square <Convenient>

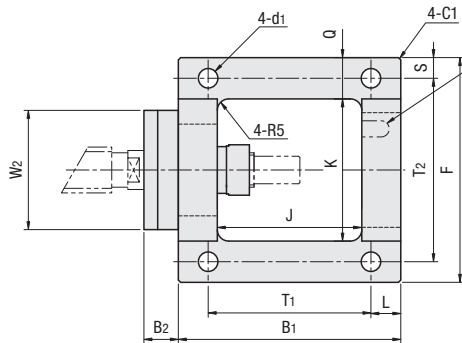
## Integrated AC Servo Motor Bracket



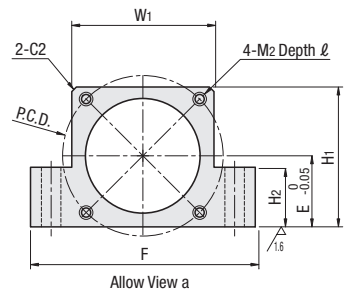
RoHS10

Type	M Material		S Surface Treatment		A Accessory	Applicable Motor
	Main Body	Support Units	Main Body	Support Units		
BJS	A5052P	S45C	Clear Anodize	Black Oxide	Collar 2 pcs. Bearing Nut 1 pc. (with Set Piece)	AC Servo Motor
BJSM				Electroless Nickel Plating		

- Features**
- Simplification of Assembly: With a support bearing unit already pre-installed mounting and aligning a motor becomes simple with a built-in pilot.
  - Accurate Shaft Centering: Unitized construction of ball screw and motor mounts reduces shaft misalignments.

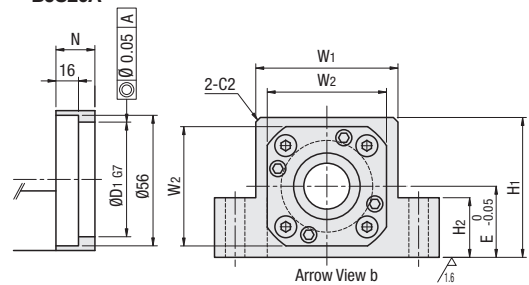
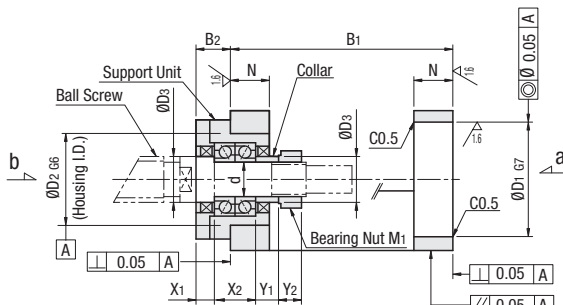


Machined wrench relief for mounting and adjusting the clamp screws for joint units BJS20A and BJSM20A.



Allow View a

• BJS20A



Arrow View b

When used together with a MISUMI ball screw, there is one support unit accessory collar spare.

For details of the support unit, see P759

Part Number Type	No.	d	B1	B2	D1	D2	D3	E	F	H1	H2	J	K	L	N	Q	S	T1	T2	W1	W2	X1	X2	Y1	Y2	P.C.D.	M1 (Fine)	M2 (Coarse)	d1	l	Support Units	
																															BJS	BJSM
BJS BJSM	* 8A	8	67	9	30	28	11.5	21	64	41	19	43	40	10	12	12	6	47	52	40	35	5	14	5.5	6.5	45	M8x1.0	M3	5.5	8	BRW8	-
	* 8B																										46	M4	10			
	*10A	10	74	13	30	34	14	25	70	46	23	46	42	10	14	14	7	54	56	42	42	8	16	5.5	8	45	M10x1.0	M3	6.5	8	BRW10	BRWN10
	10B																										46	M4	8			
	*12A	12	74	13	30	36	15	25	72	47	23	46	44	10	14	14	7	54	58	44		44	8	16	5.5	8	45	M3	6.5	10	BRW12	BRWN12
	12B																										70	M4	10			
	12C		84		50			31	98	62	26	56	62	13			18	9	58	80	62					70	M5	8.5	Through			
	15A	15	97	15	50	40	20	31	98	61	26	63	62	13	17	18	9	71	80	62						70	M5	8.5	13	BRW15	BRWN15	
	15B		106		70			41	128	82	36	72	82	16	23	23	11	74	106	82	52	8	18	10	10	90	M6	10.5	15			
	20A	20	117	22	50	70	25	35	116	70	30	69	70	20	24	23	11	77	94	70	68	14	28	11	13	70	M5	10.5	13	BRW20	BRWN20	
	20B		127		70			41	128	82	36	79	82					87	106	82	68					90	M6	15				

\* marked sizes are for BJS only.

Ordering Example: Part Number BJS8A

### Motor Compatibility Chart

Part Number	Motor			Part Number	Motor		
	Flange Size	Manufacturer	Output (W)		Flange Size	Manufacturer	Output (W)
BJS8A BJS10A BJS12A	□38	Panasonic	30 50 100	BJS (M)12C BJS (M)15A BJS (M)20A	□60	Yaskawa Electric Corporation	200 400
BJS8B BJS (M)10B BJS (M)12B	□40	Yaskawa Electric Corporation	30 50 100			Mitsubishi Electric Corporation	200 400
		Mitsubishi Electric Corporation	50 100			Sanyo Denki Co., Ltd.	200 400
		Sanyo Denki Co. Ltd.	30 50 100	Omron Corporation	200 400		
		Omron Corporation	30 50 100	Yaskawa Electric Corporation	750		
				Mitsubishi Electric Corporation	750		
				Sanyo Denki Co., Ltd.	750		
		Omron Corporation	750				

- Motor part numbers and specifications are subject to change. Refer to motor manufacturer's specifications.
- Selection of motors, ball screws and couplings should be made upon confirming user's application specific criteria.
- Other motors and couplings not listed in the chart can also be used. Consult with mounting dimensions and specifications of each product.
- When selecting ball screws, use MISUMI Technical Calculation Software: <http://fa.misumi.jp/> (Free)

Part Number Type	No.	BJS	BJSM
		Unit Price	Unit Price
		1 ~ 10 pc (s).	1 ~ 10 pc (s).
	8A		-
	8B		-
	10A		-
	10B		-
	12A		-
	12B		-
	12C		-
	15A		-
	15B		-
	20A		-
	20B		-