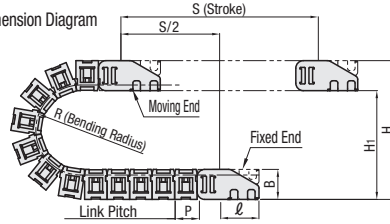


Cable Carriers - Low Particle Generation, Low Noise

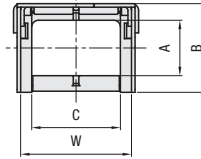


Type	Main Body Material	Mounting Bracket	
		Material	Surface Treatment
Cable Carrier + Mounting Bracket	MPSCS Nylon 6 + Glass Fiber 30% TPEE (Operating Temperature -8 ~ 80°C) Flammability Standard UL94-HB Equivalent	SPCC	Trivalent Bright Chromate Plating

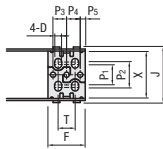
External Dimension Diagram



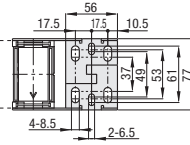
Cross Section View



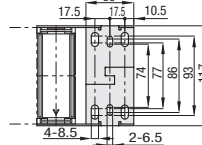
<Common to Moving and Fixed End>



• MPSCS3560



• MPSCS35100



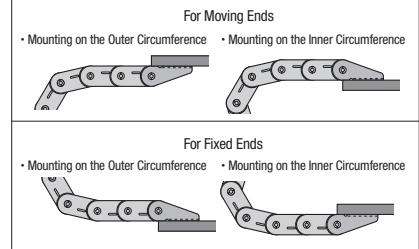
<Cautions>

- Cable Carrier (10 Links and 1 Link) and mounting brackets are not assembled together at the time of delivery. Link connection and brackets assembly are required for use.
- Install the mounting bracket fixed end on the lower side, and moving end on the upper side. (Refer to the Positional Relationship in External Dimension Diagram)
- Mounting bracket shape varies depending on size.

Part Number Type	Bending Radius Selection No.	Number of Links	Mounting Direction	Cable Carrier Dimensions													Mounting Dimensions					H (Mounting Height)	H1	HF (Required Physical Height)	K (Arc + Margin)	Weight per Meter (kg) (Reference)
				A	B	C	W	P	ℓ	F	T	J	X	D	Applicable Screw (D)	P1	P2	P3	P4	P5						
MPSCS (Cable Carrier + Mounting Brackets)	1520	28	8-67	S (Common to Mounting on the Outer and Inner Circumferences)	15	25	20	28	18	29	22	10	32.8	30.4	4.2	M4	12	15	8	8	3	95	70	115	128.6	0.34
		34	9-68		105	80	125	144.3																		
	31	8-77	115		82	145	150.4																			
	2040	38	9-78		20	33	40	50	20	35	26	14	54.8	52.4	6.5	M6	21	27	130	97	160	174	0.7			
		58	12-81		170	137	200	236.8																		
	2540	60	9-57		25	40	40	50	30	52.5	40	24	56.4	53.2	7	M6	21	40	185	145	215	251.5		0.77		
		85	11-60		235	195	265	330																		
	2560	60	9-57		25	40	60	70	30	52.5	40	24	76.4	73.2	7	M6	35.4	47	185	145	215	251.5	0.94			
		60	9-57		25	40	80	90	30	52.5	40	24	96.4	93.2	7	M6	60	75.2	185	145	215	251.5		1.2		
	3560	75	8-51		35	55	60	73	45	68.5	-	-	-	-	-	-	-	-	240	185	270	323.9			1.4	
100		10-53	295	240	325	410.2																				
35100	75	8-47	35	55	100	113	45	68.5	-	-	-	-	-	-	-	-	240	185	270	323.9	2					
	100	10-49	295	240	325	410.2																				

Part Number Type	Bending Radius Selection No.	Number of Links	Mounting Direction	Unit Price Cable Carrier + Mounting Bracket (One Link Unit Price x Number of Links) + Mounting Bracket Price	
MPSCS (Cable Carrier + Mounting Brackets)	1520	28	8-67		
		34	9-68		
	2040	31	8-77	S (Common to Mounting on the Outer and Inner Circumferences)	
		38	9-78		
	2540	58	12-81		
		60	9-57		
	2560	85	11-60		
		60	9-57		
	2580	60	9-57		
		75	8-51		
3560	100	10-53			
	75	8-47			
35100	75	8-47			
	100	10-49			

Mounting Direction



<Cautions on Model Selection>

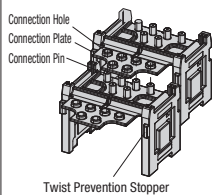
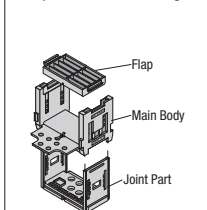
- A Cable Carrier and suitable Mounting Brackets (Moving Ends x1 set, Fixed Ends x1 set) are in a set.

- In the case of new designs, there may be a possibility that carrier links run short. It is recommended that links are selected longer by one or two links, and are adjusted (removed) at the time of installing (removing) device.

Ordering Example: Part Number - Bending Radius - Number of Links - Mounting Direction
MPSCS2540 - 85 - 20 - S

Low Particle Generation, Low Noise Cable Carriers (MPSCS) - Link Connection

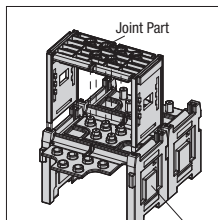
Component Structure Diagram



- 1 Link connection
Align cable carrier connection pins with the connection holes. Be sure to keep clear of the twist prevention stopper when fitting them together.



- 2 Insert the cable carrier in the main body
Be sure that the connection plate is fully mated with the carrier.



- 3 Insert joint parts
Insert the joint part into the cable carrier to align joint part connection holes with the connection pins.



- 4 Confirm the connection
Please be sure if there is no gap between the joint parts and the cable carrier, and if the joint parts mounting hooks are secure.