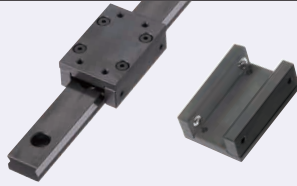


Simplified Slide Rails

Steel, With Ball Rollers

Load Rating: 68N, 147N/pc

■ Features: Linear Rail made of carbon steel.



RoHS10

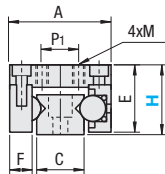
Type		Rail
Set (Slider 1 pc. + Rail 1 pc.)		
BJKSG (Standard Type)	BJKR	
BJKSW (Wide Type)		

Part Name	Material	Surface Treatment
Slider	S45C	Black Oxide
Rail	S45C	Black Oxide*
Ball	SUS440C	-
Mounting Screw	SCM435	Black Oxide

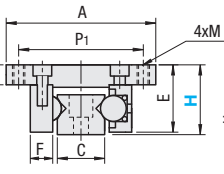
* Except Sliding Contact Surface

Set
(Slider 1 pc. + Rail 1 pc.)

BJKSG
(Standard Type)

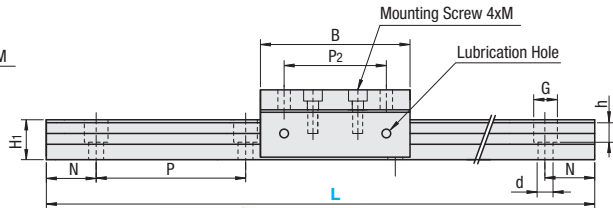


BJKSW
(Wide Type)



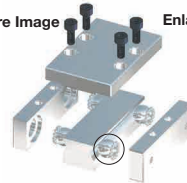
BJKR

Rail only



•Structure Image

Enlarged View in ○



⚠ Use in places where guides are subjected to moment load is not recommended.

Part Number	Slider Dimensions										Guide Rail Dimensions					Mounting Low Head Screws	Load Rating N (kgf) per Slider	
	Type	H	A		B	T	E	F	P1		P2	M	H1	C	dxGxh			N
		Standard	Wide					Standard	Wide									
Set	16	30	44	44	4	15	6	13	37	34	3	9	16	4.5x8x5.5	15	40	M3x6	68(7)
Standard Type	20	30	44	44	8	19	6	13	37	34	3	9	16	4.5x8x5.5	15	40	M3x8	68(7)
Wide Type	24	41	60	60	4	23	9	15	50	41	4	16	19	6x8.5x9	20	60	M4x6	147(15)
Rail only	28	41	60	60	8	27	9	15	50	41	5	16	19	6x8.5x9	20	60	M4x8	147(15)



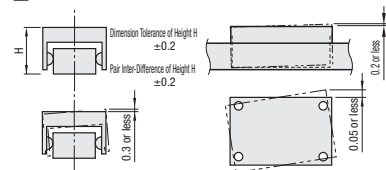
Ordering Example
Part Number - L
BJKSG28 - 400 (Set)
BJKR24 - 160 (Rail only)

H	L	Effective Stroke Slider 1 pc.	Unit Price			Addable Slider Qty.
			Standard Type	Wide Type	Rail only	
			BJKSG	BJKSW	BJKR	
70	20					-
110	60					1
150	100					1~2
190	140					1~3
230	180					1~4
270	220					1~5
310	260					1~6
350	300					1~7
390	340					1~8
430	380					1~9
470	420					1~10
510	460					1~10
550	500					1~10
590	540					1~10
630	580					1~10
670	620					1~10
710	660					1~10
750	700					1~10
790	740					1~10
70	20					-
110	60					1
150	100					1~2
190	140					1~3
230	180					1~4
270	220					1~5
310	260					1~6
350	300					1~7
390	340					1~8
430	380					1~9
470	420					1~10
510	460					1~10
550	500					1~10
590	540					1~10
630	580					1~10
670	620					1~10
710	660					1~10
750	700					1~10
790	740					1~10

■ Features of Simplified Slide Rails

- Linear mechanisms such as simplified fixtures can be built at an affordable price. Best suited when more secure slide rails are required than aluminum products on P641 and P647.
- As many sliders and rails can be added as necessary.
- Height (H), length (L) and mounting pitches (N, P) are in common with Linear Guides.

■ Precision Standards



Alterations
Part Number - L - (S, W)
BJKSG16 - 550 - S1

Alterations	Code	Spec.
Additional Slider	Standard Type	S
	Wide Type	W

Sliders are added. Please specify additional slider quantity after S and W. Please refer to the price list for maximum quantity of addable sliders.

■ Selection Example

Additional Slider Qty.	Ordering Code	Slider Total Qty.
5	BJKSG16-510-S5	6
1	BJKSG16-510-S1-W2	4

⚠ Added sliders are of the same H dimension as that of the original part number model.
⚠ When ordering 50 or more identical sliders at a time, please request a quotation.
⚠ Not applicable when ordering rails only.

⚠ Effective stroke is the dimension value with a margin of approx. 3mm set from each end to avoid dropout of sliders.