


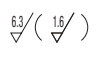
# Height Adjusting Blocks for Miniature Linear Guides

## Standard Rail Type

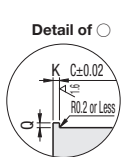
Blocks for Miniature Linear Guides. Width/Height tolerance and parallelism are guaranteed.



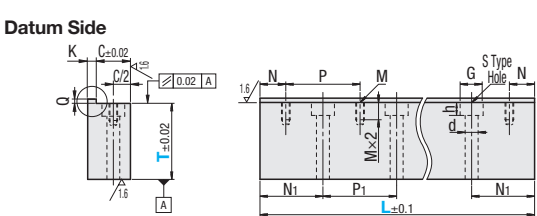
Type		Material	Surface Treatment
Datum Side	Free Side		
GETA	GETE	S45C Equivalent	Electroless Nickel Plating
AGETA	AGETE	Aluminum Alloy	Clear Anodize



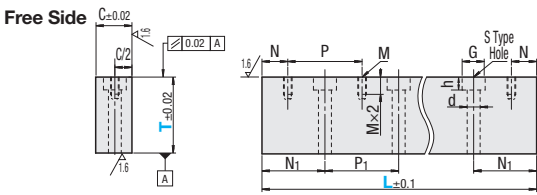
Detail of  $\phi$

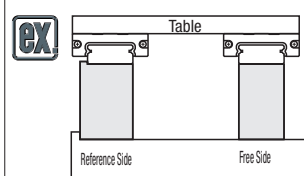


Datum Side



Free Side





Type	Part Number (Slide Guide H Dimension) No.	L Selection							1mm Increment	C	K	Q	N	P	N <sub>1</sub>	P <sub>1</sub>	Tapped Hole M	S Through + Counterbored Hole			
		40	55	70	85	100	115	130										d	G	h	
GETA AGETA GETE AGETE	8	40	55	70	85	100	115	130	10-60	7	2	1	5	15	12.5	15	M2	3.5	6	3.5	
	10	55	75	95	115	135	155	175		195	9	3	1.5	7.5	20	17.5	20	M3	4.5	8	4.5
	13	70	95	120	145	170	195	220		245	12	3	2	10	25	22.5	25	M3	4.5	8	4.5
	16	110	150	190	230	270	310	350		390	15	3	3	15	40	35	40	M3	5.5	9.5	5.5
	20	160	220	280	340	400	460				20	3	4	20	60	50	60	M5	6.5	11	6.5

When  $T \leq M \times 4$ , the pilot holes for tapping go through.

Ordering Example: **Part Number** GETA10 - **L** 115 - **T** 20

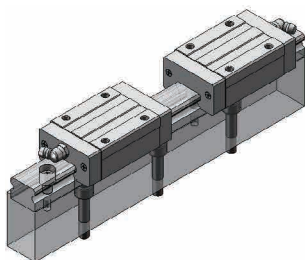
### Price List

No.	L	Unit Price							
		GETA		AGETA		GETE		AGETE	
		T10-30	T31-60	T10-30	T31-60	T10-30	T31-60	T10-30	T31-60
8	40								
	55								
	70								
	85								
	100								
	115								
	130								
	145								
	160								
	175								
10	195								
	215								
	235								
	255								
	275								
	295								
	315								
	335								
	355								
	375								
13	395								
	415								
	435								
	455								
	475								
	495								
	515								
	535								
	555								
	575								
16	595								
	615								
	635								
	655								
	675								
	695								
	715								
	735								
	755								
	775								
20	795								
	815								
	835								
	855								
	875								
	895								
	915								
	935								
	955								
	975								

### Number of Holes

No.	L	Number of Holes	
		M	S
8	40	3	2
	55	4	3
	70	5	4
	85	6	5
	100	7	6
	115	8	7
	130	9	8
	145	10	9
	160	11	10
	175	12	11
10	195	13	12
	215	14	13
	235	15	14
	255	16	15
	275	17	16
	295	18	17
	315	19	18
	335	20	19
	355	21	20
	375	22	21
13	395	23	22
	415	24	23
	435	25	24
	455	26	25
	475	27	26
	495	28	27
	515	29	28
	535	30	29
	555	31	30
	575	32	31
16	595	33	32
	615	34	33
	635	35	34
	655	36	35
	675	37	36
	695	38	37
	715	39	38
	735	40	39
	755	41	40
	775	42	41
20	795	43	42
	815	44	43
	835	45	44
	855	46	45
	875	47	46
	895	48	47
	915	49	48
	935	50	49
	955	51	50
	975	52	51

Example



### Applicable Linear Guides

P533-P554 Compatible with Miniature Linear Guides L Selectable Types.

- H13 is not applicable to L420 or more.
- H16 is not applicable to L510 or more.
- H20 is not applicable to L520 or more.