

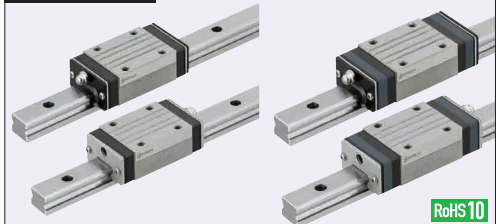
Linear Guides for Heavy Load - Dust Resistant

With Double Seals / Metal Scrapers, Normal Clearance

Features: **Dust Resistant** Heavy Load Linear Guide usable where dust and machining chips exist.

Lubrication Units **MX**
Provides long term maintenance-free operation.

Industry Standard



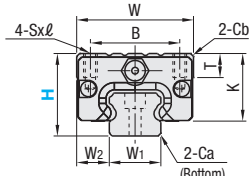
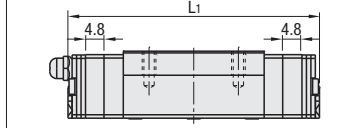
RoHS10

Blocks and rails are not sold as separate items. Normal Clearance Type has guaranteed radial clearances and accuracies as sets of blocks and rails.

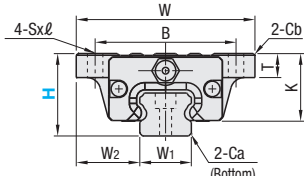
	Type		MX (Lubrication Units)	L Dimension	Number of Blocks	Material Hardness
	Double-Sealed	With Metal Scrapers				
Standard Block	SXRD	SXRK	Blank: None -MX: Provided	Selectable	1	Carbon Steel 58HRC~
	SX2RD	SX2RK			2	
	SXRDL	SXRKL			1	
	SX2RDL	SX2RKL			2	
Wide Block	SXWD	SXWK			1	
	SX2WD	SX2WK			2	
	SXWDL	SXWKL			1	
	SX2WDL	SX2WKL			2	

Heat Resistant Temperature: -20 ~ 80°C

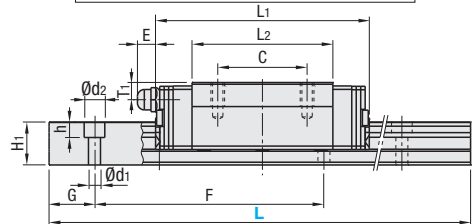
Dimension Diagram of Blocks with MX (Lubrication Units)



Standard Block



Wide Block



For L Configurable, G dimensions differ from those shown in the table below. For details, see P. 531.

Precautions for Use

- Blocks are equipped with retainers to prevent balls from falling off. For how to handle the blocks, see P. 525.
- Radial clearances and accuracies are not guaranteed if the blocks and rails are interchanged from the original set combinations.
- Straight grooves are provided on datum planes. Be sure to match the datum lines when using.
- Rails cannot be connected end to end.
- The accuracy of Linear Guides is guaranteed after mounting the rail (after fastening screws on the rail and pushing it onto the datum plane).
- Minor bending of the rail will be adjusted after being mounted and will not affect the performance.

Others

- Filled with Lithium soap based grease (Alvania Grease S2 by Showa Shell Sekiyu K.K.).
- Grease Fittings: Straight Type for H24 and Angled Type for H28 and H33.
- Grease Fitting is screw-in type, and thus, can be repositioned.
- For Operating Life Calculation, see P. 527
- For operating life calculations, use our free calculation software from http://download.misumi.jp/mol/fa_soft.html.

	Part Number		MX	H	Block Dimension											Guide Rail Dimension										
	Type	MX			L	W	L1		B	C	Sxℓ	L2	K	T	Cb	Grease Fitting			Counterbored Hole							
							Standard	MX								Mounting Hole	E	T1	H1	W1	W2	Ca	d1xd2xh	F	G	
Standard Block	(1 block)	(2 blocks)	Blank: None -MX: Provided	24	160(220) -1480	34	62 (58.6)	71.6 (68.2)	26	26	M4x7	41	20	7	0.85	M5xP0.8	6	5	12.5	15	9.5	0.5	3.5x6x4.5	60	20	
	SXRD	SX2RD		28	220 -1960	42	73.4 (69)	83 (78.6)	32	32	M5x8	47.6	22.5	7.5	1	M6xP0.75	13	6	15.5	20	11	0.6	6x9.5x8.5	60	20	
	SXRK	SX2RK		33	220(280) -1960	48	90 (85.4)	99.6 (95)	35	35	M6x9	61	26.5	8	1	M6xP0.75	13	6.8	18	23	12.5	0.8	7x11x9	60	20	
	SXRDL	SX2RDL		SXRKL	SX2RKL	24	160(220) -1480	52	62 (58.6)	71.6 (68.2)	41	26	4.5	41	20	7	0.5	M5xP0.8	6	5	12.5	15	18.5	0.5	3.5x6x4.5	60
Wide Block	(1 block)	(2 blocks)	Blank: None -MX: Provided	28	220 -1960	59	73.4 (69)	83 (78.6)	49	32	5.5	47.6	22.5	9	1	M6xP0.75	13	6	15.5	20	19.5	0.6	6x9.5x8.5	60	20	
	SXWD	SX2WD		33	220(280) -1960	73	90 (85.4)	99.6 (95)	60	35	7	61	26.5	10	1	M6xP0.75	13	6.8	18	23	25	0.8	7x11x9	60	20	
	SXWK	SX2WK																								
	SXWDL	SX2WDL		SXWKL	SX2WKL																					

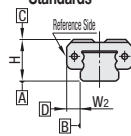
L Dimension: Dimensions in () are for 2-Block Type.
L1 Dimension: Dimensions in () are for Metal Scraper Type.

kgf=Nx0.101972

H	Basic Load Rating		Allowable Static Moment		Mass						
	C (Dynamic) kN	Co (Static) kN	MA, Mb N·m	Mc N·m	Block kg				Guide Rail kg/m		
					Double-Sealed	With Metal Scrapers	Standard	Wide		Standard	Wide
24	8.6	14.2	69	98	0.21	0.26	0.21	0.26	1.5		
28	12.5	21.3	155	232	0.32	0.37	0.32	0.37	2.4		
33	20.2	34.5	275	393	0.48	0.63	0.49	0.64	3.4		

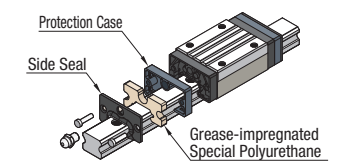


Preload and Accuracy Standards



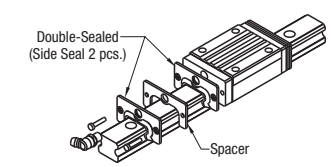
Normal Clearance Type		Dimensional Accuracy (µm)		Standard Grade
Radial Clearance (µm)	H24 -4~+2	Height H Tolerance		±100
	H28 -5~+2	Pair Variation of Height H		20
	H33 -6~+3	Width W2 Tolerance		±100
		Pair Variation of Width W2	H24, 28	20
			H33	30
		Running Parallelism of Plane C against Plane A		See P. 525
		Running Parallelism of Plane D against Plane B		

Lubrication Units **MX**



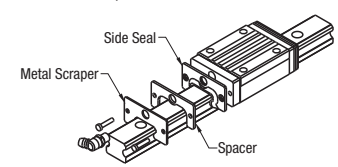
Advantages of Lubrication Unit MX: Provides long term maintenance-free operation. Reduces maintenance cost. Most suitable where the design does not allow lubrication. For details, see P. 530.

Double-Sealed



The double seal scheme with two layers of side seals enhances the sealing effect and prevents intrusion of foreign substances into the block. Can be used where dust and machining chips exist. Sliding resistance of Double-Sealed Type is higher than that of Standard Type.

With Metal Scrapers



Larger foreign substances adhered to the rail can be removed by attaching metal scrapers on the external side of the side seals. Can be used in areas with high temperature dusts such as weld spatter.