

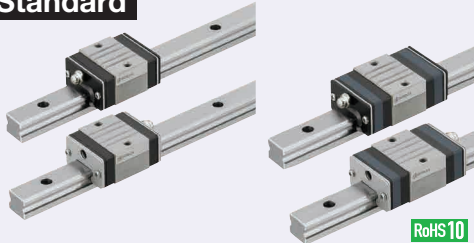
# Linear Guides for Medium Load - Dust Resistant

## With Double Seals / Metal Scrapers, Normal Clearance

**Features:** Dust Resistant Heavy Load Linear Guide usable where dust and machining chips exist.

**Lubrication Units MX**  
Provides long term maintenance-free operation.

### Industry Standard

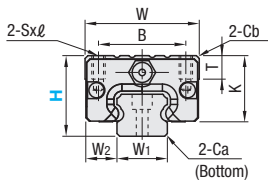
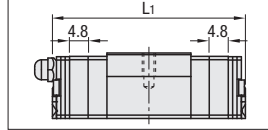


Blocks and rails are not sold as separate items. Normal Clearance Type has guaranteed radial clearances and accuracies as sets of blocks and rails.

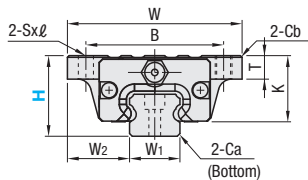
Type	MX (Lubrication Units)		L Dimension	Number of Blocks	Material Hardness
	Double-Sealed	With Metal Scrapers			
Standard Block	SVRD	SVRK	Blank: None -MX: Provided	Selectable	Carbon Steel 58HRC~
	SV2RD	SV2RK			
	SVRDL	SVRKL		Configurable	
	SV2RDL	SV2RKL			
Wide Block	SVWD	SVWK	Blank: None -MX: Provided	Selectable	Carbon Steel 58HRC~
	SV2WD	SV2WK			
	SVWDL	SVWKL		Configurable	
	SV2WDL	SV2WKL			

Heat Resistant Temperature: -20 ~ 80°C

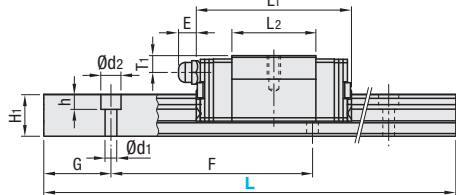
Dimension Diagram of Blocks with MX (Lubrication Units)



Standard Block



Wide Block



For L Configurable, G dimensions differ from those shown in the table below. For details, see P.531.

- Precautions for Use
- Blocks are equipped with retainers to prevent balls from falling off. For how to handle the blocks, see P.525.
- Radial clearances and accuracies are not guaranteed if the blocks and rails are interchanged from the original set combinations.
- Straight grooves are provided on datum planes. Be sure to match the datum lines when using.
- Rails cannot be connected end to end.
- The accuracy of Linear Guides is guaranteed after mounting the rail (after fastening screws on the rail and pushing it onto the datum plane).
- Minor bending of the rail will be adjusted after being mounted and will not affect the performance.

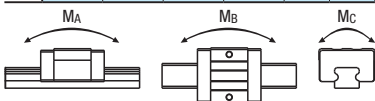
- Others
- Filled with Lithium soap based grease (Alvania Grease S2 by Showa Shell Sekiyu K.K.).
- Grease Fittings: Straight Type for H24 and Angled Type for H28 and H33.
- Grease Fitting is screw-in type, and thus, can be repositioned.
- For Operating Life Calculation, see P.527
- For operating life calculations, use our free calculation software from [http://download.misumi.jp/mol/fa\\_soft.html](http://download.misumi.jp/mol/fa_soft.html).

Part Number	Type	MX	H	L	Block Dimension										Guide Rail Dimension																												
					W	L1		B	Sxℓ	L2	K	T	Cb	Grease Fitting			H1	W1	W2	Ca	Counterbored Hole d1xd2xh	F	G																				
						Standard	MX							Mounting Hole	E	T1																											
Standard Block	(1 block)	Blank: None -MX: Provided	24	160 ~1480	34	46 (42.6)	55.6 (52.2)	26	M4x7	25	20	7	0.85	M5xP0.8	6	5	12.5	15	9.5	0.5	3.5x6x4.5	60	20																				
	(2 blocks)																							SVRD	SV2RD	SVRK	SV2RK	SVRDL	SV2RDL	SVRKL	SV2RKL												
	28																							220 ~1960	42	53.4 (49)	63 (58.6)	32	M5x8	27.6	22.5	7.5	1	M6xP0.75	13	6	15.5	20	11	0.6	6x9.5x8.5	60	20
	33																							220 ~1960	48	66 (61.4)	75.6 (71)	35	M6x9	37	26.5	8	1	M6xP0.75	13	6.8	18	23	12.5	0.8	7x11x9	60	20
Wide Block	(1 block)	Blank: None -MX: Provided	24	160 ~1480	52	46 (42.6)	55.6 (52.2)	41	4.5	25	20	7	0.5	M5xP0.8	6	5	12.5	15	18.5	0.5	3.5x6x4.5	60	20																				
	(2 blocks)																							SVWD	SV2WD	SVWK	SV2WK	SVWDL	SV2WDL	SVWKL	SV2WKL												
	28																							220 ~1960	59	53.4 (49)	63 (58.6)	49	5.5	27.6	22.5	9	1	M6xP0.75	13	6	15.5	20	19.5	0.6	6x9.5x8.5	60	20
	33																							220 ~1960	73	66 (61.4)	75.6 (71)	60	7	37	26.5	10	1	M6xP0.75	13	6.8	18	23	25	0.8	7x11x9	60	20

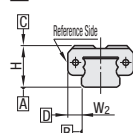
Dimensions in ( ) are for Metal Scraper Type.

kgf=Nx0.101972

H	Basic Load Rating		Allowable Static Moment			Mass					
	C (Dynamic) kN	Co (Static) kN	MA	MB	N·m	Mc	Block kg				Guide Rail kg/m
							Double-Sealed	Standard	Wide	Standard	
24	5.0	8.23	33	57	0.16	0.21	0.16	0.21	1.5		
28	7.2	12.1	58	135	0.22	0.27	0.22	0.27	2.4		
33	11.7	19.6	109	225	0.33	0.43	0.34	0.44	3.4		



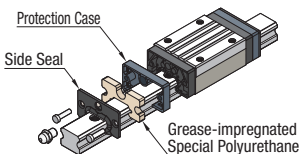
### Preload and Accuracy Standards



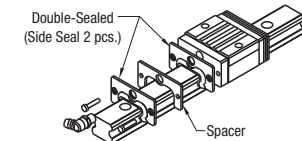
#### Normal Clearance Type

Radial Clearance (µm)	Dimensional Accuracy (µm)	Standard Grade
H24 -4~+2	Height H Tolerance	±100
H28 -5~+2	Pair Variation of Height H	20
H33 -6~+3	Width W2 Tolerance	±100
	Pair Variation of Width W2	20
	H24·28	20
	H33	30
	Running Parallelism of Plane C against Plane A	See P.525
	Running Parallelism of Plane D against Plane B	

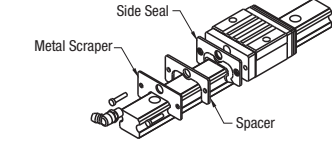
### Lubrication Units MX



### Double-Sealed



### With Metal Scrapers



Advantages of Lubrication Unit MX: Provides long term maintenance-free operation. Reduces maintenance cost. Most suitable where the design does not allow lubrication. For details, see P.530.

- The double seal scheme with two layers of side seals enhances the sealing effect and prevents intrusion of foreign substances into the block.
- Can be used where dust and machining chips exist.
- Sliding resistance of Double-Sealed Type is higher than that of Standard Type.

- Larger foreign substances adhered to the rail can be removed by attaching metal scrapers on the external side of the side seals.
- Can be used in areas with high temperature dusts such as weld spatter.