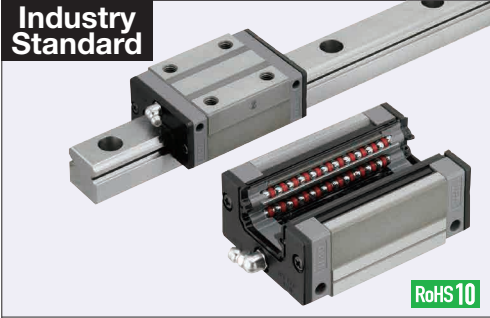


Linear Guides for Super Heavy Load - Stainless Steel

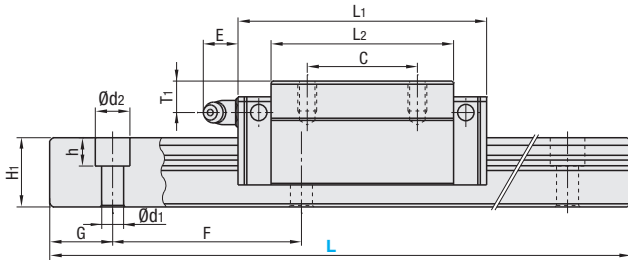
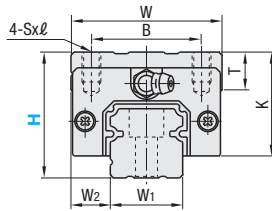
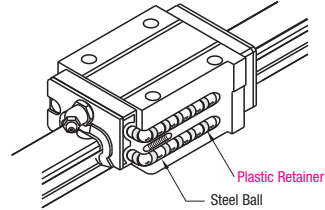
With Plastic Retainers, Interchangeable, Light Preload

Features: Linear Guides with Plastic Retainers prevent contact between balls and result in low noise levels under high-speed operation.



Material Hardness	Type		Block	Rail	L Dimension
	1 block	2 blocks			
Stainless Steel (SUS440C Equivalent) 57HRC~	SSHRZ	SSH2RZ	SSHRB	SSHZL	Selectable
	SSHRLZ	SSH2RLZ		SSHZLF	Configurable

Heat Resistant Temperature: 0 ~ 50°C



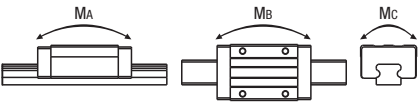
For L Configurable, G dimensions differ from those shown in the table below. For details, see P. 531.

- Precautions for Use**
 - Blocks are equipped with retainers to prevent balls from falling off. For how to handle the blocks, see P. 525.
 - For Interchangeable, Light Preload Type, rails and blocks can be interchanged.
 - Straight grooves are provided on datum planes. Be sure to match the datum lines when using.
 - Rails cannot be connected end to end.
 - The accuracy of Linear Guides is guaranteed after mounting the rail (after fastening screws on the rail and pushing it onto the datum plane).
 - Minor bending of the rail will be adjusted after being mounted and will not affect the performance.
- Others**
 - Filled with Lithium soap based grease (Alvania Grease S2 by Showa Shell Sekiyu K.K).
 - Angled Grease Fitting Type
 - Grease Fitting is screw-in type, and thus, can be repositioned.
 - For Operating Life Calculation, see P. 527
 - For operating life calculations, use our free calculation software from http://download.misumi.jp/mol/fa_soft.html.

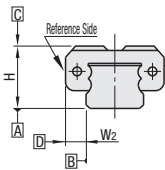
Part Number	Block Dimension											Guide Rail Dimension									
	Type		H	L	W	L ₁	B	C	Sxℓ	L ₂	K	T	Grease Fitting			H ₁	W ₁	W ₂	Counterbored Hole d ₁ x ₂ x _z h	F	G
	1 block	2 blocks											Mounting Hole	E	T ₁						
SSHRZ SSHRLZ (Block)	SSH2RZ SSH2RLZ (Rail)	30	220~1480	44	69.8	32	36	M5x6	50	25	12	M6xP0.75	11	5	18	20	12	6x9.5x8.5	60	20	
SSHRB SSHZL SSHZLF		40	220~1480	48	79	35	35	M6x9	58	33	12	M6xP0.75	11	10	22	23	12.5	7x11x9	60	20	

kgf=Nx0.101972

H	Basic Load Rating		Allowable Static Moment			Mass	
	C (Dynamic) kN	Co (Static) kN	MA N·m	MB N·m	MC N·m	Block kg	Guide Rail kg/m
30	16.3	29.6	167	141	199	0.33	2.6
40	22.4	37.5	246	207	295	0.55	3.6



Preload and Accuracy Standards

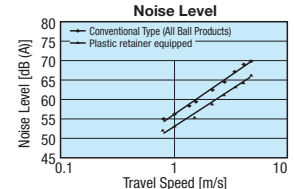


Interchangeable, Light Preload Type

Radial Clearance (µm)	
H30, 40	-5~0

Dimensional Accuracy (µm)	Interchangeable
Height H Tolerance	±20
Pair Variation of Height H	15
Width W ₂ Tolerance	±30
Pair Variation of Width W ₂	25
Running Parallelism of Plane C against Plane A	See P. 525
Running Parallelism of Plane D against Plane B	

Features of Plastic Retainers: Low noise levels and improved sound quality



- Lack of mutual contact between balls results in low noise levels and improved sound quality.
- Since there is no mutual contact abrasion between the balls, particle generation is less than those of conventional products.