

# Miniature Linear Guides - Wide Rails

## Long Blocks with Dowel Holes, Light Preload

**Features:** MISUMI original specifications with dowel holes. Requires less time for assembly and has better repeatability.

**MISUMI Original**

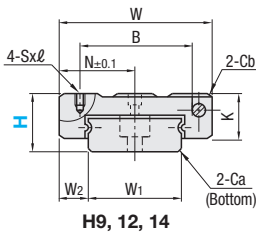
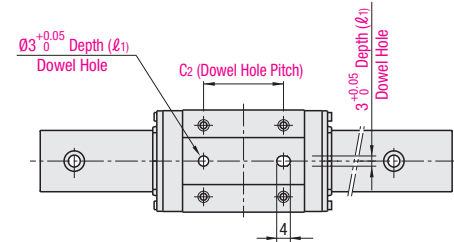


RoHS 10

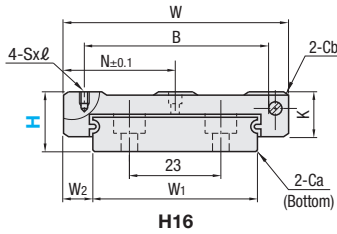
Blocks and rails are not sold as separate items. This Type has guaranteed radial clearances and accuracies as sets of blocks and rails.

Material Hardness	Type	L Dimension	Number of Blocks
	Light Preload High Grade		
Stainless Steel 56HRC~	SSELBWN	Selectable	1
	SSEL2BWN		2
	SSELBWNL	Configurable	1
	SSEL2BWNL		2

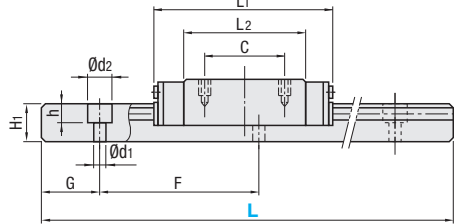
Heat Resistant Temperature: -20 ~ 80°C



H9, 12, 14



H16



For L Configurable, G dimensions differ from those shown in the table below. For details, see P. 531.

**Precautions for Use**

- Blocks are equipped with retainers (wire) to prevent balls from falling off. For how to handle the blocks, see P. 525.
- Radial clearances and accuracies are not guaranteed if the blocks and rails are interchanged from the original set combinations.
- Straight grooves are provided on datum planes. Be sure to match the datum lines when using.
- Rails cannot be connected end to end.
- The accuracy of Linear Guides is guaranteed after mounting the rail (after fastening screws on

the rail and pushing it onto the datum plane).

Minor bending of the rail will be adjusted after being mounted and will not affect the performance.

**Others**

- Filled with Lithium soap based grease (Multemp Grease PS2 by Kyodo Yushi Co., Ltd.).
- For operating life calculation, see P. 527.
- For operating life calculations, use our free calculation software from [http://download.misumi.jp/mol/fa\\_soft.html](http://download.misumi.jp/mol/fa_soft.html).

Part Number	Type	H	L	Block Dimension							Dowel Hole Dimensions				Guide Rail Dimension						
				W	L <sub>1</sub>	B	C	Sxℓ	L <sub>2</sub>	K	Cb	N	C <sub>2</sub> (ℓ <sub>1</sub> )	W <sub>1</sub>	W <sub>2</sub>	H <sub>1</sub>	Ca	Counterbored Hole d <sub>1</sub> x <sub>2</sub> x <sub>h</sub>	F	G	
SSELBWN SSEL2BWN SSELBWNL SSEL2BWNL	9	80~290 (110)	25	43.5	19	19	M3x3	32.5	7	0.3	12.5	19	2.5	14	5.5	5.2	0.5	3.5x6x3.2	30	10	
	12	80~290 (110)	30	51.6	23	24	M3x3	40.6	9	0.3	15	24	2.5	18	6	7.5	0.5	3.5x6x4.5	30	10	
	14	110~470 (150)	40	61.6	28	28	M3x3.5	47.4	11	0.5	20	28	3.5	24	8	8	0.5	4.5x8x4.5	40	15	
	16	110~670 (190)	60	74.9	45	35	M4x4.5	59.9	13	0.5	30	35	4	42	9	9.5	0.5	4.5x8x4.5	40	15	

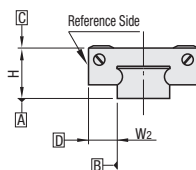
Dimensions in ( ) are for 2-Block Type.

kgf=N×0.101972

H	Basic Load Rating			Allowable Static Moment			Mass	
	C (Dynamic) kN	Co (Static) kN	MA N·m	MB N·m	MC N·m	Block kg	Guide Rail kg/m	
9	1.7	4.0	12.1	12.1	28.8	0.035	0.50	
12	2.6	5.3	20.2	20.2	49.5	0.06	0.96	
14	3.9	8.5	38.6	38.6	104.6	0.12	1.40	
16	7.2	14.3	86.0	86.0	305.2	0.23	2.95	



**Preload and Accuracy Standards**



Specifications	Unit: μm
	Light Preload, High Grade
Radial Clearance	-3~0
Height H Tolerance	±20
Pair Variation of Height H	15
Width W <sub>2</sub> Tolerance	±25
Pair Variation of Width W <sub>2</sub>	20
Running Parallelism of Plane C against Plane A	See
Running Parallelism of Plane D against Plane A	P. 525