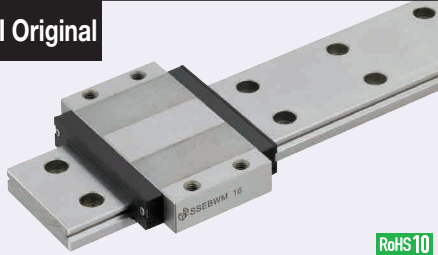


Miniature Linear Guides - Wide Rails

Wide Standard Blocks, Light Preload / Slight Clearance

Features: Wide Block Type of MISUMI original specifications. Larger screw size has enhanced fastening strength compared to standard products.

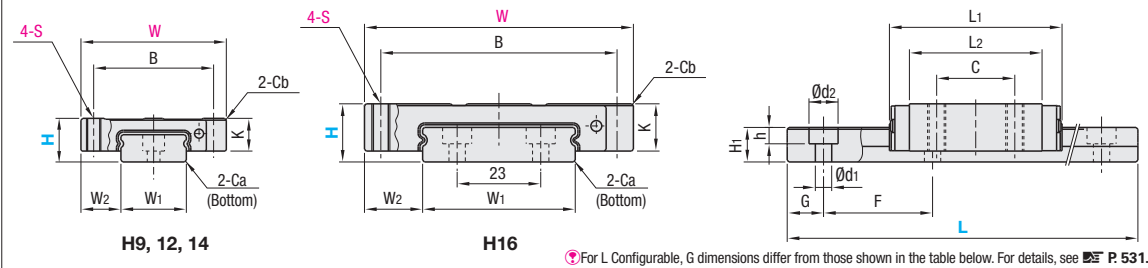
MISUMI Original



Blocks and rails are not sold as separate items. This Type has guaranteed radial clearances and accuracies as sets of blocks and rails.

Material Hardness	Type		L Dimension	Number of Blocks
	Light Preload High Grade	Slight Clearance Standard Grade		
Stainless Steel 56HRC~	SSEBWM	SSEBWMZ	Selectable	1
	SSE2BWM	SSE2BWMZ		2
	SSEBWML	SSEBWMLZ	Configurable	1
	SSE2BWML	SSE2BWMLZ		2

Heat Resistant Temperature: -20 ~ 80°C



For L Configurable, G dimensions differ from those shown in the table below. For details, see P. 531.

Precautions for Use

- Blocks are equipped with retainers (wire) to prevent balls from falling off. For how to handle the blocks, see P. 525.
- Radial clearances and accuracies are not guaranteed if the blocks and rails are interchanged from the original set combinations.
- Straight grooves are provided on datum planes. Be sure to match the datum lines when using.
- Rails cannot be connected end to end.
- The accuracy of Linear Guides is guaranteed after mounting the rail (after fastening screws on the rail and pushing it onto the datum plane). Minor bending of the rail will be adjusted after being mounted and will not affect the performance.

Others

- Filled with Lithium soap based grease (Multemp Grease PS2 by Kyodo Yushi Co., Ltd.).
- For operating life calculation, see P. 527.
- For operating life calculations, use our free calculation software from http://download.misumi.jp/mol/fa_soft.html.

Part Number Type	H	L	Block Dimension								Guide Rail Dimension						
			W	L ₁	B	C	S	L ₂	K	Cb	W ₁	W ₂	H ₁	Ca	Counterbored Hole d1xd2xh	F	G
SSEBWM SSE2BWM SSEBWML SSE2BWML SSEBWMZ SSE2BWMZ SSEBWMZL SSE2BWMZL	9	50-290 (110)	36	31.1	29	12	M4	20.1	7	0.3	14	11	5.2	0.5	3.5x6x3.2	30	10
	12	50-290 (110)	40	38	33	12	M4	27	9	0.3	18	11	7.5	0.5	3.5x6x4.5	30	10
	14	70-470 (150)	51	44.3	44	15	M4	30.1	11	0.5	24	13.5	8	0.5	4.5x8x4.5	40	15
	16	70-670 (190)	74	55	65	20	M5	40	13	0.5	42	16	9.5	0.5	4.5x8x4.5	40	15

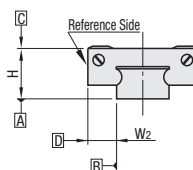
Dimensions () are for 2-Block Type.

kgf=Nx0.101972

H	Basic Load Rating/Allowable Static Moment			Mass			
	C (Dynamic)	Co (Static)	MA	MB	MC	Block	Guide Rail
	kN	kN	N·m	N·m	N·m	kg	kg/m
9	1.4	2.2	7.8	7.8	15.5	0.035	0.50
12	2.3	3.7	13.7	16.3	30.4	0.06	0.96
14	3.5	5.3	20.6	22.3	52.1	0.11	1.40
16	5.8	8.5	40.2	43.6	148	0.2	2.95



Preload and Accuracy Standards



Specifications	Light Preload, High Grade	Slight Clearance, Standard Grade
Radial Clearance	-3-0	0~+15
Height H Tolerance	±20	±20
Pair Variation of Height H	15	40
Width W ₂ Tolerance	±25	±25
Pair Variation of Width W ₂	20	40
Running Parallelism of Plane C against Plane A	See P. 525	
Running Parallelism of Plane D against Plane A		

Slight Clearance Type has clearance (Gap) between rails and blocks. If precision / rigidity is required, select Light Preload Type.