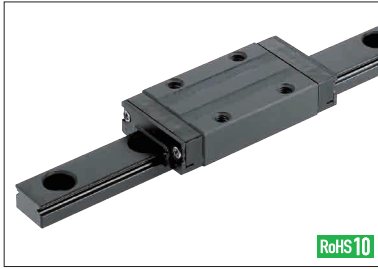


Linear Guides with Low Temperature Black Chrome Plating



Low Temperature Black Chrome Plated Linear Guide Features

Low temperature black chrome plating on linear guides is 5µm of fluoropolymer layer chemically deposited as black film on rails and blocks, and it has long-lasting rust prevention effect. The coating layer is immune to cracking from tight radii strike-folding and does not flake under repeated bending. Any superficial coating particles that may come off the rolling contact surfaces are mixed in with the grease and remain its lubricity. (Note) Surface treatment will not be applied to mounting holes of rails and blocks of low temperature black chrome plated linear guides.

Description of Low Temperature Black Chrome Plated Model Type:

For low temperature black chrome plated products, change the first letter of part numbers "S" to "R".

	[Standard]	[Low Temperature Black Chrome Plated Products]
(Ex.)	:SSEB16-270	⇒ :RSEB16-270
	:SXR24-520	⇒ :RXR24-520
	:SSVR33-700	⇒ :RSVR33-700

Table: Low Temperature Black Chrome Plated Miniature Linear Guides

Rail	Block Length	Block Type	Catalog Page	Stainless Steel			
				1 block		2 blocks	
				Selectable	Configurable	Selectable	Configurable
Standard	Standard	Standard	P533	RSEB	RSEBL	RSE2B	RSE2BL
	Long	Standard	P539	RSELB	RSELBL	RSEL2B	RSEL2BL
Wide	Standard	Standard	P555	RSEBW	RSEBWL	RSE2BW	RSE2BWL
	Long	Standard	P563	RSELBW	RSELBWL	RSEL2BW	RSEL2BWL

The precision grade and standard type of the existing products and C-VALUE products are not available. Only the high grade type of the existing products is available. Cannot be combined with Alteration WC (Parallel Use of 2 Rails).

Table: Low Temperature Black Chrome Plated Medium and Heavy Load Linear Guides

Rail	Block Length	Block Type	Catalog Page	Carbon Steel				Stainless Steel			
				1 block		2 blocks		1 block		2 blocks	
				Selectable	Configurable	Selectable	Configurable	Selectable	Configurable	Selectable	Configurable
Standard	Medium Load	Standard	P569, 589	RVR	RVRN	RV2R	RV2RN	RSVR	RSVRL	RSV2R	RSV2RL
		With Dowel Holes	P597	RVRN	RVRNL	RV2RN	RV2RNL	-	-	-	-
		Wide (Through Holes)	P569	RVW	RVWL	RV2W	RV2WL	-	-	-	-
		Wide (Tapped Holes)	P569	RVWT	RVWTL	RV2WT	RV2WTL	-	-	-	-
		Standard	P575, 589	RXR	RXRN	RX2R	RX2RN	RSXR	RSXRL	RSX2R	RSX2RL
	Heavy Load	With Dowel Holes	P597	RXRN	RXRNL	RX2RN	RX2RNL	-	-	-	-
		Wide (Through Holes)	P575	RXW	RXWL	RX2W	RX2WL	-	-	-	-
		Wide (Through Holes)	P575	RXWT	RXWTL	RX2WT	RX2WTL	-	-	-	-
		Standard	P575, 589	RXR	RXRN	RX2R	RX2RN	RSXR	RSXRL	RSX2R	RSX2RL
		Wide (Through Holes)	P575	RXW	RXWL	RX2W	RX2WL	-	-	-	-

The high grade type of the existing products and C-VALUE products are not available. Only the standard type of the existing products is available. Cannot be combined with Alteration WC (Parallel Use of 2 Rails).

Price of Low Temperature Black Chrome Plating Surface Treatment (For low temperature black chrome plated products, add the prices below for surface treatment to the unit price of Linear Guides.)

Part Number	Type	H	L	Unit Price		Part Number	Type	H	L	Unit Price		Part Number	Type	H	L	Unit Price	
				Block 1 pc.	Block 2 pcs.					Block 1 pc.	Block 2 pcs.					Block 1 pc.	Block 2 pcs.
Miniature Linear Guides - Standard Rails	Page P533, 539	8	40-55			Miniature Type - Wide Rails	Page P555, P563	9	50-110			Medium/Heavy Load Type	Page P569, P575, P589, P597	24	100-220		
			56-70						111-140						221-280		
			71-85						141-170						281-340		
			86-100						171-200						341-400		
			101-115						201-230						401-460		
		116-130			231-260					461-520							
		35-75			261-290					521-580							
		76-95			50-110					581-640							
		96-115			111-140					641-700							
		116-135			141-170					701-760							
		136-155			171-200					761-820							
		156-175			201-230					821-880							
		176-195			231-260					881-940							
		196-215			261-290					941-1000							
		216-235			70-150					160-280							
	236-255			151-190			281-340										
	256-275			191-230			341-400										
	45-95			231-270			401-460										
	96-120			271-310			461-520										
	121-145			311-350			521-580										
	146-170			351-390			581-640										
	171-195			391-430			641-700										
	196-220			431-470			701-760										
	221-245			471-510			761-820										
	246-270			511-550			821-880										
	271-295			551-590			881-940										
	296-320			591-630			941-1000										
	321-345			631-670			160-280										
	346-370						281-340										
	371-395						341-400										
396-420						401-460											
421-445						461-520											
446-470						521-580											
70-150						581-640											
151-190						641-700											
191-230						701-760											
231-270						761-820											
271-310						821-880											
311-350						881-940											
351-390						941-1000											
391-430						160-280											
431-470						281-340											
471-510						341-400											
511-550						401-460											
551-590						461-520											
591-630						521-580											
631-670						581-640											
100-200						641-700											
201-220						701-760											
221-280						761-820											
281-340						821-880											
341-400						881-940											
401-460						941-1000											
461-520																	
521-580																	
581-640																	
641-700																	

Not applicable to H6.5.

For H24, 28, or 33, L is available up to 1000mm.



Ordering Example

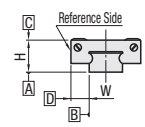
Part Number - L
 RSEB13 - 270 (L Type Greased)
 RSEB8L - 70 (G Type Greased)
 RSEB8G - 70 (G Type Greased)

Alternative grease types available.
 For Days to Ship, Price and Performance, P531



Alterations Confirm the details of alteration on each page.

Accuracy



Miniature Type (µm)

Standard Preload Type	High Grade
Height H Tolerance	+30 -20
Pair Variation of Height H	15
Dimension Tolerance of Width W	±25
Pair Variation of Width W	20

Precisions of low temperature black chrome plated miniature linear guides have been revised as above. Accuracy of Medium/Heavy Load Type is the same as that of Standard Type. The sliding resistance is higher than usual: approx. 1.2 N or lower.

Not applicable to H6.