

Tall Blocks Housing Units

Medium / Medium Long / Long

= For customers selecting MISUMI original specifications =

The products on this page are of standard specifications (Outer cylinder SUJ2 equivalent, Retainer resin). Consider these specifications while selecting the product.

Features: A design that reduces linear bushing assembly steps. More compact width (W dim.) than Wide Blocks.

MISUMI Original

Medium



Medium Long



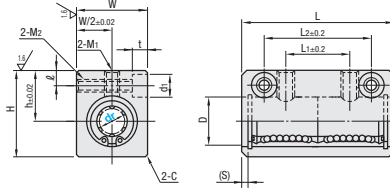
Long



RoHS10

Type			Linear Bushing Used			Housing		Ambient Operating Temp.
Medium	Medium Long	Long	(P.317)	(P.315)	Material	Surface Treatment		
LHSSD	LHSSS	LHSSL	LMUD	LMU	LMU	Aluminum Alloy	Clear Anodize	-20~80°C

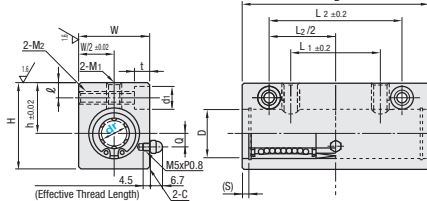
Medium



$\frac{6.3}{\sqrt{16}}$ (Housing)

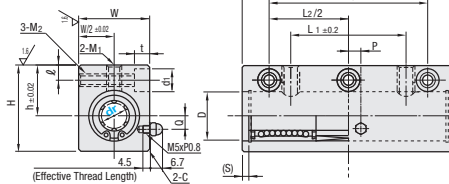
Features of Medium Type Bushings
Body length is approximately 1.4 times of single type, and allowable moment is approximately 4.3 times. Suitable for applications where there is no enough space for double type.

Medium Long



Features of Medium Long Type
Body length is approximately 2.2 times of single type and allowable moment is approximately 10 times; suitable where no space for long type is available.

Long



Features of Long Type
Body length is approximately 2.5 times of single type. Allowable moment is approximately 21 times.

Type	Part Number			D	(S)	L			L1			L2			h	W	H	ℓ	Q	P	M1 (Effective Length)	M2 (Effective Length)	d1xt	C
	dr	Medium	Medium Long			Long	Medium	Medium Long	Long	Medium	Medium Long	Long	Medium	Medium Long										
(Medium) LHSSD	(6)				12	3	37	-	-	14	-	-	24	-	-	14	16	22	5	-	M4 (8)	M4 (11)	6x5 (For M3 Screws)	1
	8				15	3	45	-	80	20	-	48	32	-	60	16	20	26	-	-	M5 (8.5)	M4 (15)	-	
	10	0				19																M5 (20)	M5 (22)	
(Medium Long) LHSSS	*12	-0.01			21	4	57	85	100	25	48	62	40	62	76	20	28	34	7	7.5	M6 (9.5)	M6 (23)	9x7 (For M5 Screws)	
	13		0	-0.015	23																M6 (13)	M6 (29)	11x8 (For M6 Screws)	
(Long) LHSSL	*16				28	3.8	66	100	121	30	62	74	46	78	90	27	36	49	7	7	M8 (15)	M8 (34)	-	
	*20		0	-0.018	32		75	115	136	34	68	82	52	88	102	31	42	54	8	8	M10 (17)	M10 (42)	14x10 (For M8 Screws)	
	*25	-0.012	0	-0.018	40	3.2	93	160	187	42	96	116	66	120	140	37	52	65	9	0	M10 (17.5)	M10 (48)	-	
	*30				45		100	170	202	42	106	128	66	130	152	40	58	71					2 or less	

For Precautions for Use, see P.303. Grease fitting is not available on Long Type dr8. (dr) is applicable to Medium Type only. Only sizes with * are available for Medium Long Type. Make certain that the screws do not interfere with the bushing as M1 are through holes. The datum surface is located on the other side of product ID label.

Part Number	Unit Price			
	Medium	Medium Long	Long	
Type	dr	LHSSD	LHSSS	LHSSL
(Medium) LHSSD	6			
	8			
	10			
(Medium Long) LHSSS	12			
	13			
	16			
(Long) LHSSL	20			
	25			
	30			

dr	Basic Load Rating						Allowable Static Moment (N·m)			Mass (g)		
	C (Dynamic) N			Co (Static) N			Medium Long Long			Medium Long Long		
	Medium	Medium Long	Long	Medium	Medium Long	Long	Medium	Medium Long	Long	Medium	Medium Long	Long
6	226	-	-	310	-	-	1.42	-	8.2	31	-	-
8	310	-	431	452	-	784	2.12	-	16.0	60	-	126
10	508	-	588	718	-	1100	4.37	-	27.0	121	-	253
12	634	657	857	814	1200	1200	6.2	12.0	40.1	124	232	278
13	640	-	813	826	-	1570	6.2	-	42.9	186	-	376
16	1164	1230	1230	1448	2350	2350	13.1	25.5	73.5	296	472	569
20	1554	1400	1400	2068	2740	2740	18.3	35.0	98.0	403	671	788
25	1725	1560	1560	3068	3140	3140	25.3	63.1	157	843	1443	1653
30	2440	2490	2490	3974	5490	5490	42.7	106	297	979	1748	2041



Ordering Example
Part Number
LHSSD16

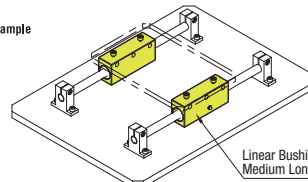
- LHSSL12L (L Type Greased)
- LHSSD16G (G Type Greased)
- LHSSD20H (H Type Greased)

Alternative grease types available.

For Days to Ship, Price and Performance, see P.304



Example



Linear Bushing Housing Units
Medium Long

kgf=Nx0.101972