

# Shaft Collar Key Relief Groove

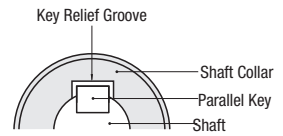
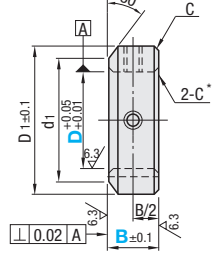
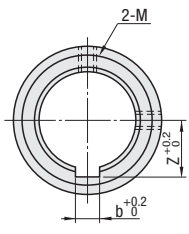
## Set Screw / Clamp

■ **Features:** Collar has clearance for a key on the shaft. (The Key Groove Clearance Channel is not for key-locking the collar itself.)



Type	Material	Surface Treatment	Accessory
SCKS	S45C	Black Oxide Coating	Set Screw 2 pcs.
PSCKS	Equivalent	Electroless Nickel Plating	SCM435 Equivalent SUS304 Equivalent

25 / (6.3 / )



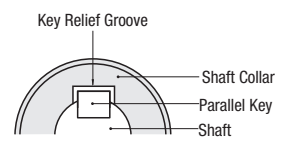
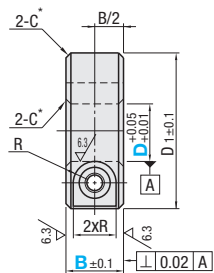
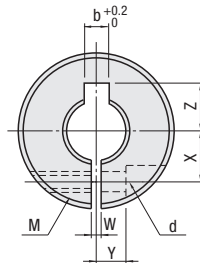
\*D10-D25: C0.5  
D30: C1

Part Number Type	D	B Selection				D1	d1	Set Screw M x Length	b	Z	Unit Price		
		6	8	10	12						SCKS	PSCKS	
SCKS PSCKS	10	6	8	10		20	13	M4x3	3.5	7			
	12		8	10		22	15	M5x4	4.5	8.5			
	15		8	10	12	26	20		5.5	10.5			
	20			10	12		32	27	M6x5	6.5	13.5		
	25				12	15	38	31		8.5	16.5		
	30					15	20	46	38	8.5	19.0		



Type	Material	Surface Treatment	Accessory
SCKS	S45C	Black Oxide Coating	Hex Socket Head Cap Screw 1 pc.
PSCKS	Equivalent	Electroless Nickel Plating	SCM435 Equivalent SUS304 Equivalent

25 / (6.3 / )



\*D10-D25: C0.5  
D30: C1

Part Number Type	D	B Selection	D1	M (Coarse)	d	R	W	X	Y	Z	b	Unit Price		
												SCKS	PSCKS	
SCKS PSCKS	10	10	30	M4	4.5	3.75	1.5	9	5	7	3.5			
	12	10	30	M4	4.5	3.75		10	5	8.5	4.5			
	15	10	34	M4	4.5	3.75		11.5	6	10.5	5.5			
		12	35	M5	5.5	4.5		12						
		15		M6	6.6	6		13				8		
	20	10	40	M5	5.5	4.5		14	7	13.5	6.5			
		12			4.5	15						8		
		15			6	17						7		
	25	12	45	M5	5.5	4.5		18	10	16.5	8.5			
		15		6	19									
		30	50	M6	6.6	6						20		
	30	15	55		6	6								

⚠ The groove b is for shaft key to pass through the collar, not for use as a keyway.

Ordering Example	Part Number	-	B
	SCKS12	-	10
	PSCKS10	-	10

