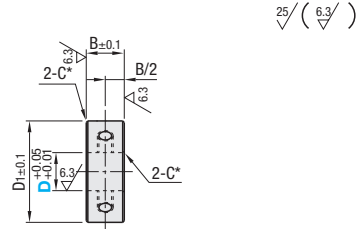
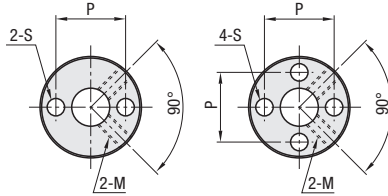


Shaft Collar Set Screw

2-Hole / 4-Hole / 2-Tapped (Coarse) / 4-Tapped (Coarse)

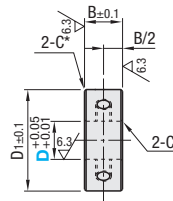
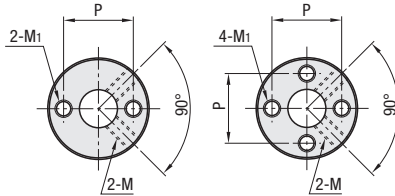


Type		M Material	S Surface Treatment	A Accessory
2-Hole	4-Hole			Set Screw 2 pcs.
SCTN	SCMN	S45C	Black Oxide Coating	MSCM435 Equivalent
PSCTN	PSCMN	Equivalent	Electroless Nickel Plating	MSUS304
SSCTN	SSCMN	SUS304	-	Equivalent



*D3 ~D25: C0.5
D30~D50: C1

Type		M Material	S Surface Treatment	A Accessory
2-Tapped	4-Tapped			Set Screw 2 pcs.
SCMW	SCTW	S45C	Black Oxide Coating	MSCM435 Equivalent
PSCMW	PSCTW	Equivalent	Electroless Nickel Plating	MSUS304
SSCMW	SSCTW	SUS304	-	Equivalent



*D3 ~D25: C0.5
D30~D50: C1

Part Number		D	B	D1	S	P	Set Screw MxLength	M1 (Coarse)
(2-Hole)	SCTN	3	6	18	3.4	11	M3x3	M3
	PSCTN	4						
(4-Hole)	SSCTN	5						
	SCMN	6						
	PSCMN	8						
	SSCMN	10						
(2-Tapped)	SCTW	12	10	22	4.5	15	M4x4	M4
	PSCTW	13						
	SSCTW	15						
	SCMW	16						
(4-Tapped)	PSCMW	18, 20	12	24	5.5	22	M5x5	M5
	SSCMW	25						
	SCMW	30						
	PSCMW	35						
*40	SSCMW	40	15	32	6.6	23	M6x6	M6
	SCMW	44						
	PSCMW	49						
	SSCMW	54						
*50	SCMW	54	20	72	9	37	M8x8	-
	PSCMW	59						
*50	SSCMW	72	25	86	11	42	M10x10	-
	SSCMW	86						

* marked sizes are not available with Tapped Holes.

D	Unit Price											
	2-Hole Type			4-Hole Type			2-Tapped Type			4-Tapped Type		
	SCTN	PSCTN	SSCTN	SCMN	PSCMN	SSCMN	SCTW	PSCTW	SSCTW	SCMW	PSCMW	SSCMW
3												
4												
5												
6												
8												
10												
12												
13												
15												
16												
*18												
20												
25												
30												
35												
*40												
*50												

* marked sizes are not available with Tapped Holes.

