

Shaft Supports Hinged (Machined)

L-Shaped / Bottom Mount / Side Mount

■ **Features:** Shafts can be easily mounted or removed. Hinged Type comes with one tightening screw.

■ L-Shaped



■ Bottom Mount



■ Side Mount



RoHS10

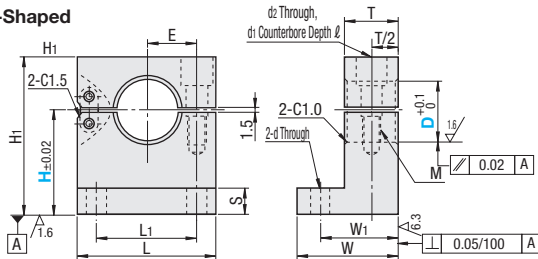
Type			Material	Surface Treatment	Accessory
L-Shaped	Bottom Mount	Side Mount			
SHKHB	SHSHB	SHYHB	S45C Equivalent	Black Oxide	Hex Socket Head Cap Screw 1 pc. Nylon Washer 1 pc.
SHKHM	SHSHM	SHYHM		Electroless Nickel Plating	
SHKHS	SHSHS	SHYHS	SUS304	-	Hex Socket Head Cap Screw 1 pc. (SIS)

Spring Pin on Hinge

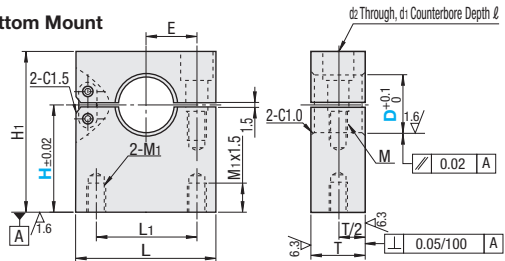
■ Material: Spring Stainless Steel
SSPSR (P2-263)

2/ (6.3/ 1.6/)

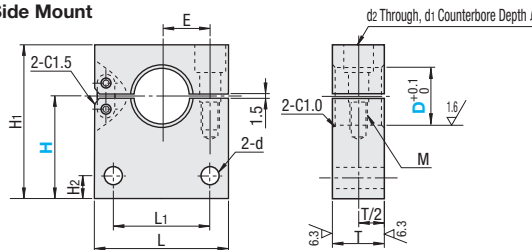
· L-Shaped



· Bottom Mount



· Side Mount



■ L-Shaped

Part Number		H Selection	L	H ₁	T	S	W	W ₁	L ₁	d	E	Tightening Screw M	d ₂	d ₁	ℓ
Type	D														
SHKHB SHKHM SHKHS	10	20	30	H+9	10	6	20	15	20	4.5	10	M4	5	8	4
	12	20		H+10											5
	16	25	40	H+12	12	24	18	28	14	M5	7	9.5	6		
	20	25		30									H+15	8	29
	25	40	50	H+18	16	8	29	36	6.6	18	M6	8	13	8	
	30	40	65	H+21										10	37

■ Bottom Mount Type, Side Mount Type

Part Number		H Selection	L	H ₁	T	L ₁	E	Tightening Screw M	M ₁	d ₂	d ₁	ℓ	H ₂	d	
Type	D														
Bottom Mount	10	20	30	H+9	10	20	10	M4	M4	5	8	4	5	4.5	
	12	20		H+10											5
	16	25		H+12											6
Side Mount	20	25	40	H+15	16	24	14.5	M5	M6	7	9.5	8	7	5.5	
	25	40		H+18										8	6.6
	30	40	65	H+21	19	45	24	M8	8	13	11	10	9		



Ordering Example

Part Number - H
SHYHM30 - 40

D	Unit Price								
	SHKHB	SHKHM	SHKHS	SHSHB	SHSHM	SHSHS	SHYHB	SHYHM	SHYHS
10									
12									
16									
20									
25									
30									