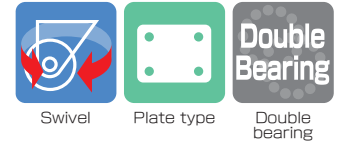


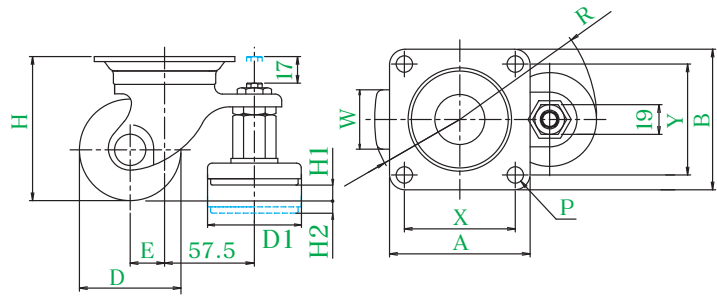
Equipped with adjuster feet SERIES

These casters are widely used for transporting machinery and equipment, appliance and furniture, etc. Articles can be easily moved and casters can be firmly fixed using the adjuster.

HG-AF_{TYPE}



HG-65GNB-AF



● Description of product number

HG - 65 GNB - AF

Bracket type	Wheel diameter	Wheel type	Equipped with adjuster feet
--------------	----------------	------------	-----------------------------

Bracket = Trivalent unichrome coating

Product number	Wheels													
		Wheel diameter	Wheel width	Mounting height	Mounting base	Mounting dimensions	Hole diameter	Eccentricity	Turning radius	Outer diameter of adjuster feet	Amount of adjustment	Allowable load	Wheel weight	
		D (mm)	W (mm)	H (mm)	A × B (mm)	X × Y (mm)	P (mm)	E (mm)	R (mm)	D1 (mm)	H1 (mm)	H2 (mm)	daN (kgf)	(g)
HG-65	PB	65	38	92	90 × 90	71 × 71	10.5	22	88	60	10	8	300 (306.0)	1230
	GNB													1175
	MC													1190
	MCE													1195
HG-75	PB	75	38	106	90 × 90	71 × 71	10.5	22	88	60	15	10	320 (326.4)	1330
	GNB													1260
	MC													1290
	MCE													1295

Wheel in use

Refer to P165 for detailed specifications.



PB Phenol wheel (including B)
GNB Reinforced nylon wheel
MC MC nylon wheel (including B)
MCE MC nylon wheel (including B) (conductive)