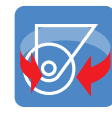


HSG TYPE



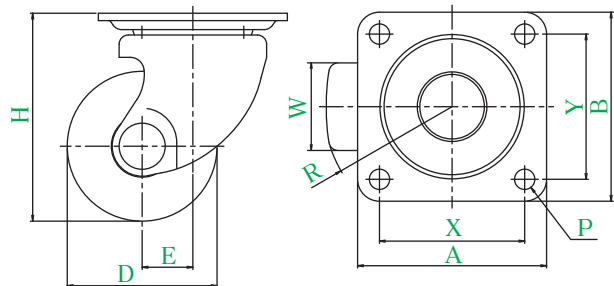
Swivel



Plate type



Double Bearing



● Description of product number

HSG - 65 GFB

Bracket type

Wheel diameter

Wheel type

HSG-65GNB

Bracket = Trivalent unichrome coating

Product number	Wheels										
		Wheel diameter D(mm)	Wheel width W(mm)	Mounting height H(mm)	Mounting base A × B(mm)	Mounting dimensions X × Y(mm)	Hole diameter P(mm)	Eccentricity E(mm)	Turning radius R(mm)	Allowance load daN(kgf)	Wheel weight (g)
HSG-50	PB Phenol wheel (including B)	50	38	79	82 × 82	63 × 63	8.8	22	49	300(306.0)	740
	GFB Reinforced nylon wheel (including B)									300(306.0)	710
	MC MC nylon wheel (including B)									300(306.0)	730
	MCE MC nylon wheel (including B) (conductive)									300(306.0)	735
HSG-65	PB Phenol wheel (including B)	65	38	90	82 × 82	63 × 63	8.8	22	57	300(306.0)	790
	GNB Reinforced nylon wheel (including B)									300(306.0)	750
	MC MC nylon wheel (including B)									300(306.0)	765
	MCE MC nylon wheel (including B) (conductive)									300(306.0)	770
HSG-75	PB Phenol wheel (including B)	75	38	100	82 × 82	63 × 63	8.8	22	61	300(306.0)	880
	GNB Reinforced nylon wheel (including B)									300(306.0)	825
	MC MC nylon wheel (including B)									300(306.0)	850
	MCE MC nylon wheel (including B) (conductive)									300(306.0)	855

Wheel in use

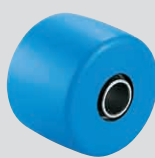
Refer to P159 for detailed specifications.



PB
Phenol wheel (including B)



GFB GNB
Reinforced nylon wheel (including B)



MC
MC nylon wheel (including B)



MCE
MC nylon wheel (including B) (conductive)