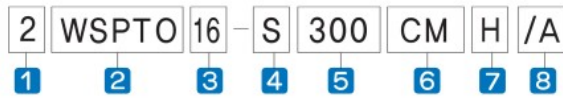


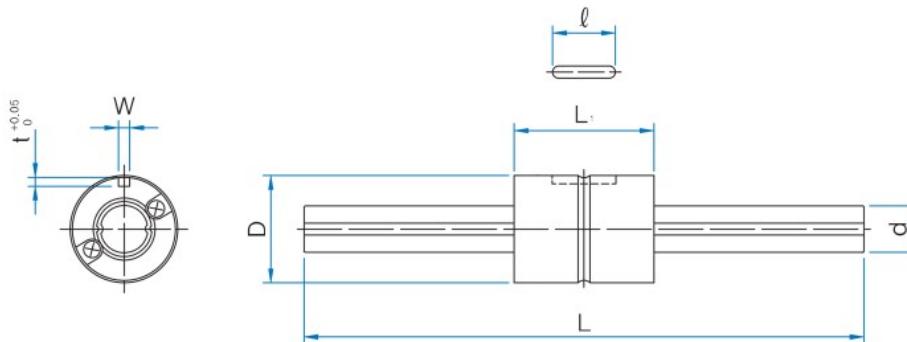
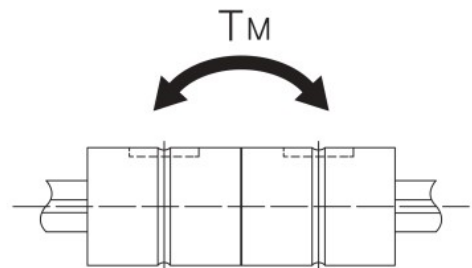
### WSPTO Type

Examples of model number formation



- 1 Q'ty of Nut    2 Part No.    3 Spline-shaft diameter
- 4 S:Solid, H:Hollow    5 Spline-shaft overall length
- 6 Preload : CT(Tight), CM(Middle), CL(Loose)
- 7 Accuracy symbol-Nomal(No symbol), High(H), Precision(P)
- 8 SUJ2(No symbol), Stainless steel(/A)

\* When the grease nipple is necessary, please ask WON.



Unit : mm

Part No.	Main dimensions												
	Outer Diameter D	Allowable Tolerance	L <sub>1</sub>	W	Allowable Tolerance	t	l	d	Allowable Tolerance	Length L		Max. length	
WSPTO 16	31	0 -0.013	50	3.5	+0.018 0	2	17.5	16	0 -0.017	200	300	400	1000
WSPTO 20	35	0 -0.016	63	4	0	2.5	29	20	0 -0.020	300	400	500 600	1000

Part No.	Basic load ratings		rating torque		Static load rating moment	Mass	
	C N	C <sub>0</sub> N	T N·m	T <sub>0</sub> N·m	T <sub>M</sub> N·m	Nut g	Shaft g/100mm
WSPTO 16	7060	12600	31.4	34.3	67.6	165	160
					393		
WSPTO 20	10200	17800	56.9	55.9	118	225	250
					700		

1N≒0.102kgf

Note(1) As for the Static load rating moment T<sub>M</sub>, the upside figures are for the value for one nut and the downside figure are for the values for 2 nuts to be closely adhered.