




SELOS · FEED-THROUGH BLOCKS WITH SCREW CONNECTION


WT 2,5

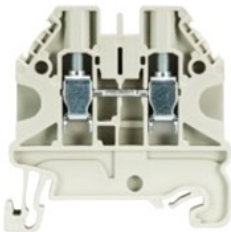
- Feed-through block with screw connection for mounting on TS 35
- Nominal cross section 2.5 mm²
-  II 2G 2D Ex eb IIC
Follow the EX installation instructions on page 160
- Max. electrical data: 32 A/4 mm²
- Connection capacity: 2 wires, equal size 0.14 – 1.5 mm²





Description	Type	Part No.	Std. Pack
Feed-through block	gray WT 2,5	58.503.0055.0	100
Feed-through block	blue WT 2,5 BL	58.503.0055.6	100
GENERAL DATA			
Width / length / height, incl. TS 7.5	5 mm / 48 mm / 48 mm		
Wire strip length	9 mm		
Approvals	 ATEX IECEx IEC Ex SEV14.0004 U SEV 14 ATEX 0124 U		
TECHNICAL DATA			
	IEC	UL	CSA
	 IEC/EN 60 079-0/-7		
Cross section fine-stranded	0.14 – 4 mm ²		
Cross section solid/stranded	0.14 – 4 mm ²		
Cross section, AWG	26 – 12		
Rated current	24 A	20 A	20 A
Rated voltage	1000 V	600 V	600 V
Rated impulse voltage	8 kV	600 V	690 V
Pollution degree	3		
ACCESSORIES			
	Type	Part No.	Std. Pack
End plate	AP WT 2,5-10	07.313.2555.0	10
Cross connector	2-pole	IVB WKF 2,5-2	10
	3-pole	IVB WKF 2,5-3	10
	4-pole	IVB WKF 2,5-4	10
	5-pole	IVB WKF 2,5-5	10
	10-pole	IVB WKF 2,5-10	20
	20-pole	IVB WKF 2,5-20	20


WT 4

- Feed-through block with screw connection for mounting on TS 35
- Nominal cross section 4 mm²
-  II 2G 2D Ex eb IIC
Follow the EX installation instructions on page 160
- Max. electrical data: 41 A/6 mm²
- Connection capacity: 2 wires, equal size 0.14 – 2.5 mm²





Description	Type	Part No.	Std. Pack
Feed-through block	gray WT 4	58.504.0055.0	100
Feed-through block	blue WT 4 BL	58.504.0055.6	100
GENERAL DATA			
Width / length / height, incl. TS 7.5	6 mm / 48 mm / 48 mm		
Wire strip length	9 mm		
Approvals	 ATEX IECEx IEC Ex SEV 14.0004 U SEV 14 ATEX 0124 U		
TECHNICAL DATA			
	IEC	UL	CSA
	 IEC/EN 60 079-0/-7		
Cross section fine-stranded	0.14 – 6 mm ²		
Cross section solid/stranded	0.14 – 6 mm ²		
Cross section, AWG	26 – 10		
Rated current	32 A	30 A	30 A
Rated voltage	1000 V	600 V	600 V
Rated impulse voltage	8 kV	600 V	690 V
Pollution degree	3		
ACCESSORIES			
	Type	Part No.	Std. Pack
End plate	AP WT 2,5-10	07.313.2555.0	10
Cross connector	2-pole	IVB WKF 4-2	10
	3-pole	IVB WKF 4-3	10
	4-pole	IVB WKF 4-4	10
	5-pole	IVB WKF 4-5	10
	10-pole	IVB WKF 4-10	20

WT 6

- Feed-through block with screw connection for mounting on TS 35
- Nominal cross section 6 mm²
-  II 2G 2D Ex eb IIC
Follow the EX installation instructions on page 160
- Max. electrical data: 57 A/10 mm²
- Connection capacity: 2 wires, equal size 0.2 – 4 mm²



Description	Type	Part No.	Std. Pack
Feed-through block	gray WT 6	58.506.0055.0	100
Feed-through block	blue WT 6 BL	58.506.0055.6	100
GENERAL DATA			
Width / length / height, incl. TS 7.5	8 mm / 48 mm / 48 mm		
Wire strip length	11 mm		
Approvals	 ATEX IECEx IEC Ex SEV 14.0004 U SEV 14 ATEX 0124 U		
TECHNICAL DATA			
	IEC	UL	CSA
	 IEC/EN 60 079-0/-7		
Cross section fine-stranded	0.2 – 10 mm ²		
Cross section solid/stranded	0.2 – 10 mm ²		
Cross section, AWG	24 – 8		
Rated current	41 A	50 A	50 A
Rated voltage	1000 V	600 V	600 V
Rated impulse voltage	8 kV	600 V	550 V
Pollution degree	3		
ACCESSORIES			
	Type	Part No.	Std. Pack
End plate	AP WT 2,5-10	07.313.2555.0	10
Cross connector	2-pole	IVB WKF 6-2	10
	3-pole	IVB WKF 6-3	10
	4-pole	IVB WKF 6-4	10
	5-pole	IVB WKF 6-5	10

More accessories page 130 ff.