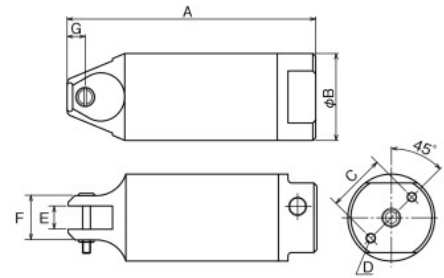


## No. GT-NR3/5/7/10L/20/30/50 Air Nipper Round-Type without Lever

- The position of air intake port is 180-degree rotatable.
- Two air intake ports are provided, so they can be switched depending on the mounting place.



### Reference

Capacity $\phi$ (mm) Soft Plastic Hard Plastic Copper Steel	Model No.	Size (mm)							Air Consumption (cm <sup>3</sup> /str.)	Air Pressure (MPa)	Weight (g)	Hose coupling	EDP No.
		A	B	C	D	E	F	G					
2.0	GT-NR3	110	23	17	M3 Depth8	7	14	7	45	0.4~0.5	70	Rc 1/8	360015
2.0	GT-NR5	94	30	20	M4 Depth10	7	17	7	64	0.4~0.5	110		360016
3.0	GT-NR7	113	34	22	M4 Depth10	9	17	7	116	0.4~0.5	150		360017
4.0	GT-NR10L	113	36	24	M4 Depth10	12	20	7	116	0.5~0.6	215		360018
7.0	GT-NR20	129	45	30	M5 Depth12	12	23	9.5	230	0.5~0.6	280		360019
10.0	GT-NR30	165	56	40	M6 Depth12	17	30	10.5	584	0.5~0.6	505	Rc 1/4	360020
12.0	GT-NR50	222	75	50	M8 Depth12	25.2	43	15	1,170	0.5~0.6	1,190	Rc 1/4	360024

※The capacity in the above table is given for reference, when mounting a standard type of blade. The capacity depends on the blade shape and the material of the object to cut.  
 ・Air hose inner dia.: 5mm ・Overall length and Weight: Accessories not included.

※Before mounting on dedicated/automatic machines, check the following product dimensions. (Flame O.D., screw dia. (screw to screw) dimensions, etc.)

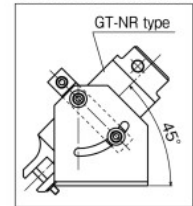
※Capacity ( $\phi$ ) is for reference purpose only. It varies depending on products.

## No. NR10LST/20ST/30ST/50ST Stand for GT-NR

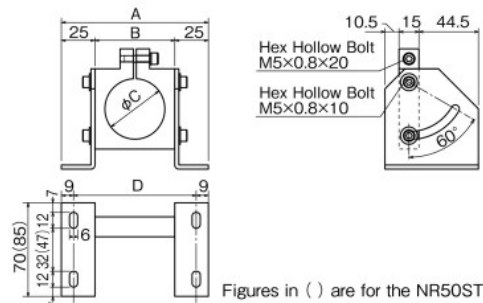
- Fixing hardware for sprue cutting of direct gates or mounting to an automatic machine.
- Mounted angle can be adjusted (0 to 60°).



### Mounting example



Model No.	Size (mm)				Weight (g)	EDP No.
	A	B	C	D		
NR10LST	102	52	36	84	335	360057
NR20ST	110	60	45	92	385	360058
NR30ST	130	80	56	112	535	360059
NR50ST	150	100	75	132	835	852436



Figures in ( ) are for the NR50ST

## No. P-10L/20/30/50 Extra Pressure Boosters

- This unit is to be used in case the originally required pressure is not obtainable by the limit of space and air pressure.



### Reference

Capacity $\phi$ (mm) Soft Plastic Hard Plastic Copper Steel	Applicable models	Model No.	Size (mm)		Air Consumption (cm <sup>3</sup> /str.)	Air Pressure (MPa)	Weight (g)	EDP No.
			A	B				
5.0	NS10L, NR10L, N12	P-10L	71	36	223	Up to 0.5MPa	115	360051
8.0	N20, NS20, NR20	P-20	87	45	508	Up to 0.5MPa	215	360052
13.0	N30, NS30, NR30	P-30	92	56	956	Up to 0.5MPa	330	360053
6.5	N50, NR50	P-50	133	75	2,670	Up to 0.5MPa	840	360054

※The capacity in the above table is given for reference, when mounting a standard type of blade. The capacity depends on the blade shape and the material of the object to cut.  
 ・Above figures of overall length and the weight are defined for the extra booster specs only. And these figures in the installation.

※Blades are optional.