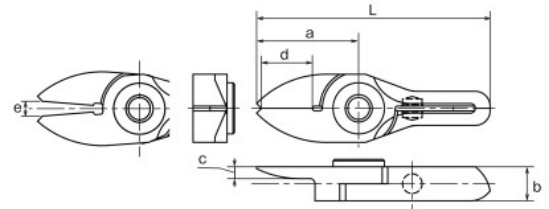


No. AJT Thin, straight blades for plastic

Plastic **AJT**/This is a set of straight blades with a thin cutting edge. It can cleanly trim cross sections without remnants.



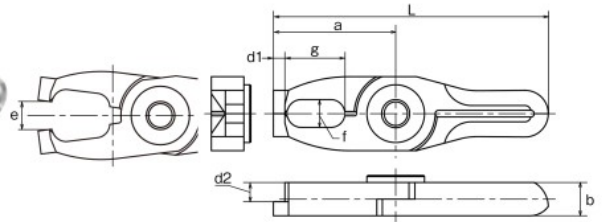
Model No.	Size (mm)							Weight (g)	Material	Applicable models	EDP No.
	a	b	c	d: Effective Length	e: Blade opening	L					
NY03AJT	21	7	2.5	10.5	3	48	17	Special alloy steel	GT-NY03G(-4)	360593	
NY05AJT	22	7	3	10.5	4	53	21	Special alloy steel	GT-NY05(-4) / NF05	360554	
NY10AJT	24	7.2	3	12	6	57	26	Special alloy steel	GT-NY10(-4) / NY10G(-4) / NF10 / NY10S	360564	
NY15AJT	27	8.2	3.5	13	8	65	38	Special alloy steel	GT-NY15(-4) / NF15	360574	

>> For guidance on cutting capability, see P264 of the technical material.

*Subject to change in the blade tip specifications. See P204.

No. AD Lift blades for plastic

Plastic **AD**/This is used for batch processing of the three-dimensional gate such as ride gate.

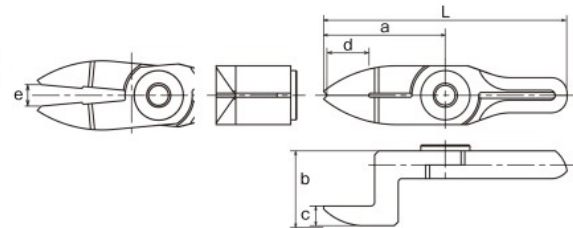


Model No.	Size (mm)			d1 (mm)	d2 (mm)	e: Blade opening (mm)	L (mm)	Weight (g)	Material	Applicable models	EDP No.
	a	b	f×g								
NY10AD	26.5	7.2	6×13	2.5	4.2	6	59.5	31	Special alloy steel	GT-NY10(-4) / NY10G(-4) / NF10 / NY10S	360568
NY15AD	30	8.2	7×14	3	4.7	8	68	45	Special alloy steel	GT-NY15(-4) / NF15	360578
NY25AD	35	10	8×17	4	6	9	81	75	Special alloy steel	GT-NY25(-6) / NY25S	360589

>> For guidance on cutting capability, see P264 of the technical material.

No. AH/RAH Crank blades for plastic

Plastic **AH**/This is a set of crank shaped blade for plastic. It is effective when there are obstructions or the gate is narrow.
RAH/This is a reverse bevel of AH type used when installing the main units face-to-face.



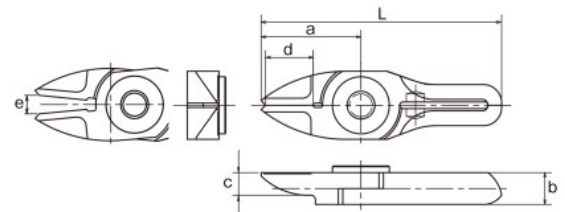
Model No.	Size (mm)							Weight (g)	Material	Applicable models	EDP No.
	a	b	c	d: Effective Length	e: Blade opening	L					
NY05AH	31	19	5	10.5	5.5	62	37	Special alloy steel	GT-NY05(-4) / NF05	360555	
NY05RAH	30	12	5	10.5	5	61	31	Special alloy steel	GT-NY05R(-4) / NF05	360557	
NY10AH	33	20	5	12	8	66	43	Special alloy steel	GT-NY10(-4) / NY10G(-4) / NF10 / NY10S	360565	
NY10RAH	32	12.2	5	12	7	65	36	Special alloy steel	GT-NY10R(-4) / NY10GR(-4) / NF10 / NY10S	360567	
NY15AH	38	21.5	5.5	13	11	76	63	Special alloy steel	GT-NY15(-4) / NF15	360575	
NY15RAH	35	13.2	5.5	13	9	73	52	Special alloy steel	GT-NY15R(-4) / NF15	360577	
NY25AH	46	24	6	17	13	92	110	Special alloy steel	GT-NY25(-6) / NY25S	360586	
NY25RAH	42	16	6	16	12	88	89	Special alloy steel	GT-NY25R(-6) / NY25S	360588	

>> For guidance on cutting capability, see P264 of the technical material.

*Subject to change in the blade tip specifications (NY25 types remain same). See P204.

No. BJ/RBJ Straight blades for metals

Metal **BJ**/This is a set of vertical blades with an unbeveled cutting edge for metal.
RBJ/This is a reverse bevel of BJ type.



Model No.	Size (mm)							Weight (g)	Material	Applicable models	EDP No.
	a	b	c	d: Effective Length	e: Blade opening	L					
NY05BJ	22	7	5	10.5	4	53	22	Special alloy steel	GT-NY05(-4) / NF05	360558	
NY05RBJ	22	7	5	10.5	4	53	22	Special alloy steel	GT-NY05R(-4) / NF05	360559	

>> For guidance on cutting capability, see P264 of the technical material.

*Subject to change in the blade tip specifications. See P204.