

CK/CF Type Support Unit

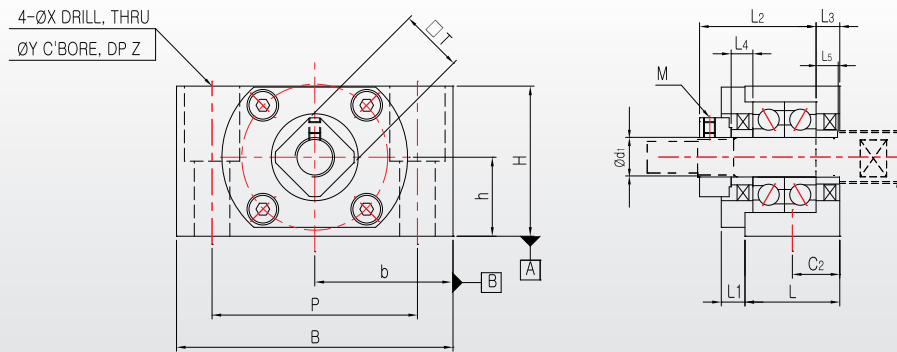
Low Center Type for Fixture /
Low Center Type for Support



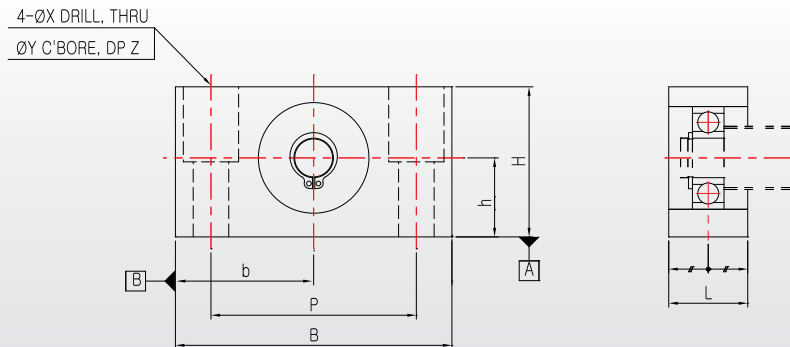
Please, download CAD DATA from www.sungilfa.com



CK 8 ~ 15



CF 8 ~ 15



Note

1. The surfaces A and B are reference for installation. Please, use the accurate size spacer if adjusting height is necessary.
2. Do not disassemble the support unit since the preload of the bearing has already been adjusted.
3. Appropriate amount of grease is filled in the bearing of fixed-side support unit.
4. Please refer to page 62 about bearing type and characteristic according to Support Unit grade
5. Please refer to page 82 for fastening torque of the lock nut.

Unit : mm

Model No.	d ₁	L	L ₁	L ₂	L ₃	B	H	b±0.02	h±0.02	P	C ₂	X	Y	Z	Collar Size		M	□T	Mass (g)
															L ₄	L ₅			
CK8	8	21.5	4	26.5	3.5	62	31	31	15.5	46	11	9	14	18	6	6	M3x0.5	14	260
CK10	10	24	6	29.5	6	70	38	35	20	52	12	9	14	19	5.5	5.5	M4x0.7	16	430
CK12	12	24	6	29.5	6	70	38	35	20	52	12	9	14	19	5.5	5.5	M4x0.7	19	430
CK15	15	25	6	38	5	80	42	40	22	60	12.5	11	17	23	10	10	M4x0.7	22	540

Unit : mm

Model No.	d ₁	L	B	H	b±0.02	h±0.02	P	X	Y	Z	Bearing	Snap Ring	Mass(g)
CF8	6	16	62	31	31	15.5	46	9	14	18	606ZZ	C6	165
CF12 ★	10	20	70	38	35	20	52	9	14	19	6000ZZ	C10	285
CF15	15	20	80	42	40	22	60	9	14	23	6002ZZ	C15	355

★CF12 is used to the CK10, CK12 into the common support unit.