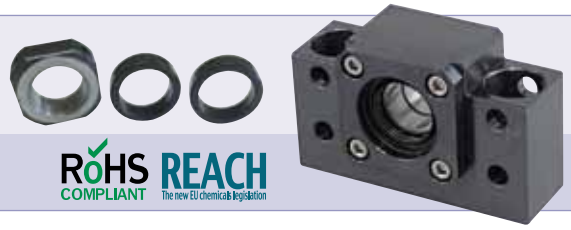


AK Type Support Unit

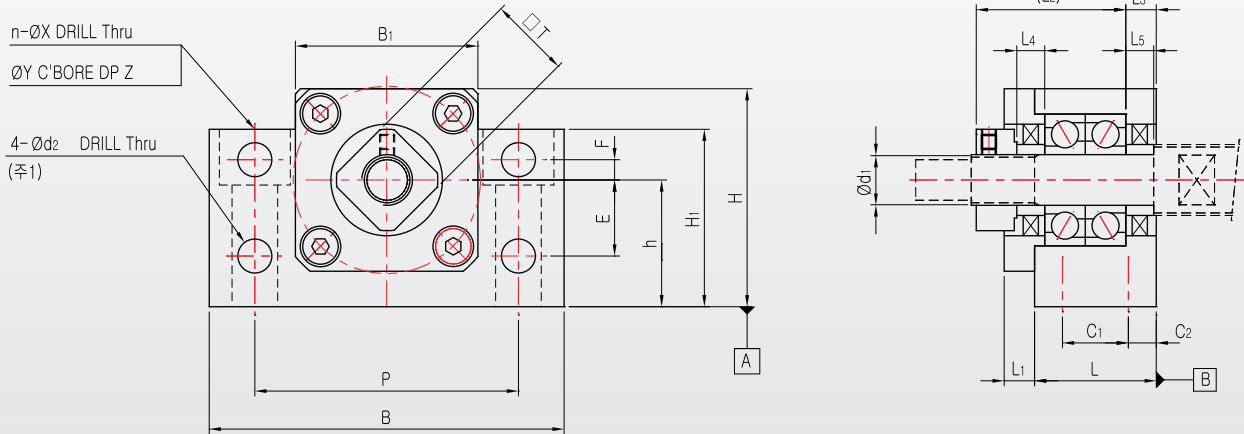
Square Type for Fixture



ROHS COMPLIANT REACH The new EU chemical legislation

Please, download CAD DATA from www.sungilfa.com

AK 8 ~ 20



Remark (1) : AK 20 has no drilled hole at the annotated position

Note

1. The surfaces A and B are reference for installation. Please, use the accurate size spacer if adjusting height is necessary.
2. Do not disassemble the support unit since the preload of the bearing has already been adjusted.
3. Appropriate amount of grease is filled in the bearing of fixed-side support unit.
4. Please refer to page 66 about bearing type and characteristic according to Support Unit grade
5. Please refer to page 86 for fastening torque of the lock nut.

Unit : mm

Model No.	d ₁	L	L ₁	L ₂	L ₃	B	H	h±0.02	B ₁	H ₁	E	F	P	C ₁	C ₂	d ₂	n	X	Y	Z	Collar Size		□T	Mass (g)
																					L ₄	L ₅		
AK8	8	20	3	24	4	52	32	17	25	26	10	4	38	-	10	5.5	2	6.6	11	12	4	4	14	190
AK10	10	24	6	29.5	6	70	43	25	36	35	15	4	52	-	12	6.6	2	9	14	11	5.5	5.5	16	450
AK12	12	24	6	29.5	6	70	43	25	36	35	15	4	52	-	12	6.6	2	9	14	11	5.5	5.5	19	440
AK15	15	25	6	36	5	80	50	30	41	40	15	4	60	-	12.5	6.6	2	11	17	15	10	10	22	570
AK20	20	42	10	50	10	95	58	30	56	45	-	-	75	22	10	-	4	11	17	15	11	11	30	1400