



# SAT series - Shock absorber

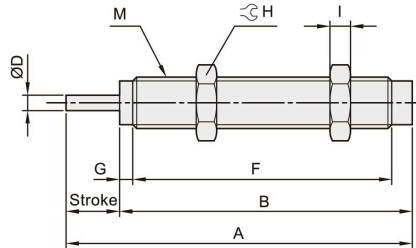
## External dimension

CHELIC PNEUMATIC

### ◉ SAT series ( Two stage absorption )

● SAT - 0806N,1007N,1210N,1412N,2015N,2525N,2725N

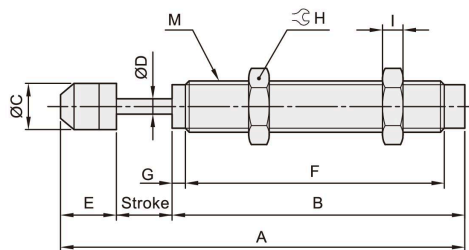
※ Without absorber cap - N



Model	Stroke	A	B	D	F	G	M	H	I
SAT - 0806N	6	46.6	40.6	2.9	33.6	2	M8 x 1.0	Cross flat 11	3
SAT - 1007N	7	54	47	3	39	3	M10 x 1.0	Cross flat 12.7	3
SAT - 1210N	10	62.5	52.5	3	44	3	M12 x 1.0	Cross flat 14	4
SAT - 1412N	12	79	67	4	58	4	M14 x 1.5	Cross flat 19	5
SAT - 2015N	15	88	73	6	62	4	M20 x 1.5	Cross flat 26	7
SAT - 2525N	25	117	92	8	82	-	M25 x 1.5	Cross flat 32	9
SAT - 2725N	25	124	99	8	86	5	M27 x 1.5	Cross flat 32	6

### ◉ SAT series None ( Adjustable )

● SAT - 0806,1007,1210,1412,2015,2025,2725



Model	Stroke	A	B	C	D	E	F	G	M	H	I
SAT - 0806C	6	55.2	40.6	6.6	2.9	8.6	33.6	2	M8 x 1.0	Cross flat 11	3
SAT - 1007C	7	62.6	47	8.6	3	8.6	39	3	M10 x 1.0	Cross flat 12.7	3
SAT - 1210C	10	71.1	52.5	10.3	3	8.6	44	3	M12 x 1.0	Cross flat 14	4
SAT - 1412C	12	90	67	12	4	11	58	4	M14 x 1.5	Cross flat 19	5
SAT - 2015C	15	103	73	18	6	15	62	4	M20 x 1.5	Cross flat 26	7
SAT - 2525C	25	136	92	22	8	19	82	-	M25 x 1.5	Cross flat 32	9
SAT - 2725C	25	143	99	22	8	19	86	5	M27 x 1.5	Cross flat 32	6