

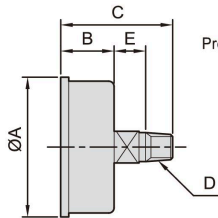
PG series - Precision regulator

External dimensions

CHELIC PNEUMATIC

PG - Center back type

How to order

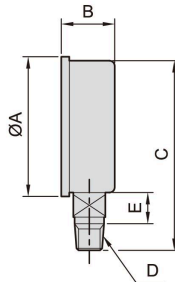


PG : Pressure gauge
10 : Model :
 05 : 1 1/4" Pressure gauge
 10 : 1 1/2" Pressure gauge
 20 : 2" Pressure gauge
S : Pressure gauge material
 None
 Plastic cover
 Glass cover (Option)
B : Max. service pressure
 L1 : 1 kgf / cm²
 L2 : 2 kgf / cm²
 L4 : 4 kgf / cm²
 None : 10 kgf / cm² (standard)
 : Center back type
 : Bottom type
 : Flange type

Dimension

Model	Code	A	B	C	D	Remark	E
PG-05	-□	33	20	34	1/8"		6
PG-10	-□	41.5	23	38	1/8"	L1 = 1 kgf / cm ² , L2 = 2 kgf / cm ² , L4 = 4 kgf / cm ²	4.5
PG-20	-□	52.5	26	45.7	1/4"		7.4

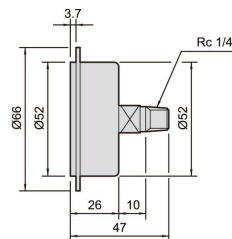
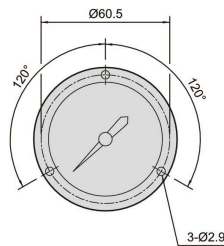
PG - 20 - S Bottom type



Dimension

Model	Code	A	B	C	D	E
PG-10-S		41.5	26	56.7	1/8"	5.5
PG-20-S		52.5	26.1	71.4	1/4"	6.3

PG - 20 - F flange type

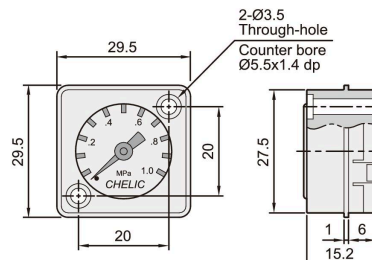


PG - 22 N Square pressure gauge

Specification

Item	Model	PG-22N
Fluid		Compressed air
Fluid temperature °C		5 ~ 60
Ambient temperature °C		5 ~ 60
Indication precision		± 4% (5~35°C Ambient temperature)
Shape		Square
Material		PBT Resin
Operating pressure MPa		0 ~ 1.0
Weight	g	11

External Dimension



How to order

PG : Pressure gauge
22 : Code
N : Type :
 : Square pressure gauge