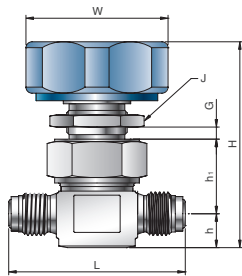


# VCDF series

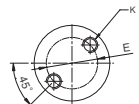
## (Forged Body Low Pressure Diaphragm Valve - Manual Operation)

### Specification

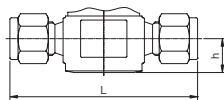
Size	1/4"	3/8", 1/2"	3/4"
Orifice Size	4.3	6.5	6.5
Cv Value	0.3	0.7	0.7
Max. Working Pressure	10 bar (145 psig)		
Max. Working Temperature	-10~80°C (-23~176°F)		
Internal Leakage Allowance - He (Holding Time - Min 30 sec)	≤ 1x10 <sup>-9</sup> atm.cc/s		
External Leakage Allowance - He (Holding Time - Min 1 min)	≤ 1x10 <sup>-9</sup> atm.cc/s		



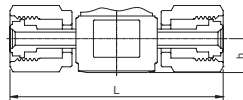
Male UCR



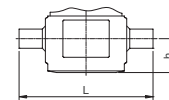
Bottom Mounting



UNILOK Tube Fitting



Female UCR



Tube Butt Weld

### Ordering Information & Dimensions

Part Number	End Connection		Dimensions (mm)									
	Inlet	Outlet	L	h	h1	H	E	K	W(Ø)	G	J(Ø)	
VCDF	U-04T-	1/4" UNILOK	62.0	11.2	24.7	68.6	17.0	M5	47.0	5.0	21.0	
	U-06T-	3/8" UNILOK	74.8	16.0	31.8	80.5	28.0					
	U-08T-	1/2" UNILOK	80.2	16.0	31.8	80.5	28.0					
	U-12T-	3/4" UNILOK	108.0	22.0	36.3	91.0	28.0					
	C-04M-	1/4" Male UCR	58.4	11.2	24.7	68.6	17.0					
	C-08M-	1/2" Male UCR	73.6	16.0	31.8	80.5	28.0					
	C-12M-	3/4" Male UCR	88.0	22.0	36.3	91.0	28.0					
	C-04F-	1/4" Female UCR	70.5	11.2	24.7	68.6	17.0					
	C-08F-	1/2" Female UCR	83.0	16.0	31.8	80.5	28.0					
	WB-04T-	1/4" Tube Butt Weld	44.2	11.2	24.7	68.6	17.0					
	WB-06T-	3/8" Tube Butt Weld	73.6	16.0	31.8	80.5	28.0					
	WB-08T-	1/2" Tube Butt Weld	73.6	16.0	31.8	80.5	28.0					
WB-12T-	3/4" Tube Butt Weld	88.0	22.0	36.3	91.0	28.0						

### Handle Position

Handle position is the same as VCDL series.

Dimensions are for reference only and are subject to change without prior notice.

UNILOK