

# VCDL series

(Standard Type Low Pressure Diaphragm Valve - Manual Operation)

## Specification

Size	1/4"	3/8", 1/2"	3/4"
Orifice Size	4.3	6.5	6.5
Cv Value	0.3	0.7	0.7
Max. Working Pressure	10 bar (145 psig)		
Max. Working Temperature	-10~80°C (-23~176°F)		
Internal Leakage Allowance - He (Holding Time - Min 30 sec)	≤ 1x10 <sup>-9</sup> atm.cc/s		
External Leakage Allowance - He (Holding Time - Min 1 min)	≤ 1x10 <sup>-9</sup> atm.cc/s		



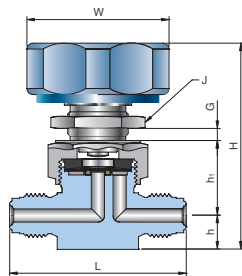
## Handle Position



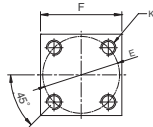
Open



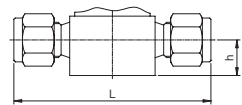
Close



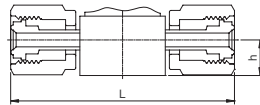
Male UCR



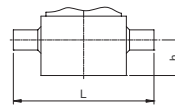
Bottom Mounting



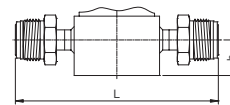
UNILOK Tube Fitting



Female UCR



Tube Butt Weld



Rotatable Male UCR

## Ordering Information & Dimensions

Part Number	End Connection		Dimensions (mm)									
	Inlet	Outlet	L	h	h1	H	F	E	K	W(Ø)	G	J(Ø)
U-04T-	1/4" UNILOK		62.0	11.2	24.7	68.6	26.9	25.4	M5	47.0	5.0	21.0
U-06T-	3/8" UNILOK		74.8	16.0	31.8	80.5	37.0	28.0				
U-08T-	1/2" UNILOK		80.2	16.0	31.8	80.5	37.0	28.0				
U-12T-	3/4" UNILOK		108.0	22.0	36.3	91.0	37.0	28.0				
C-04M-	1/4" Male UCR		58.4	11.2	24.7	68.6	26.9	25.4				
C-08M-	1/2" Male UCR		73.6	16.0	31.8	80.5	37.0	28.0				
C-12M-	3/4" Male UCR		88.0	22.0	36.3	91.0	37.0	28.0				
C-04MR-	1/4" Rotatable Male UCR		100.0	11.2	24.7	68.6	26.9	25.4				
C-04F-	1/4" Female UCR		70.5	11.2	24.7	68.6	26.9	25.4				
C-08F-	1/2" Female UCR		83.0	16.0	31.8	80.5	37.0	28.0				
WB-04T-	1/4" Tube Butt Weld		44.2	11.2	24.7	68.6	26.9	25.4				
WB-06T-	3/8" Tube Butt Weld		73.6	16.0	31.8	80.5	37.0	28.0				
WB-08T-	1/2" Tube Butt Weld		73.6	16.0	31.8	80.5	37.0	28.0				
WB-12T-	3/4" Tube Butt Weld		88.0	22.0	36.3	91.0	37.0	28.0				

Dimensions are for reference only and are subject to change without prior notice.

UNILOK