

# Suspension Brackets (screw fastened type)

The number next to the logo mark indicates items in stock for each brand.

TRUSCO  
Stock 38,650 Items

## "Wall Hook PD Type"

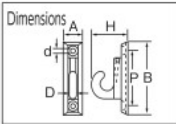


ComEco  
Chemical Content Inspection  
Com Drawing

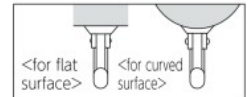


TWFPD-H-7 (for flat surface)

TWFPD-K-7 (for curved surface)



Features • It is made of stainless steel and excellent in corrosion resistance.  
Use • Setting on the wall, floor, pillar, etc., it is used as an edge bracket for the chain, wire, or rope.  
Materials • **Stainless Steel (SUS304)**  
Origin • China



Order Unit: 1 Piece

(Price revision date: Jan, 2017) TRUSCO NAKAYAMA CORPORATION

Order Code	Item No.	Price (per piece)	MSRP (per piece)	D (mm)	A (mm)	B (mm)	P (mm)	H (mm)	d (mm)	Handing load (N/kgf)	SPQ (piece)	Weight (g)
380-3732	TWFPD-H-7	¥1,545	¥1,670	7	17.5	70	54	34	4.2	147/15	20	71
380-3741	TWFPD-K-7	¥1,545	¥1,670	7	17.5	70	54	34	4.2	147/15	20	64

Contact us:0120-509-849 <http://www.orange-book.com/>

TRUSCO  
Stock 38,650 Items

## "Wall Hook IP Type"



ComEco  
Chemical Content Inspection  
Com Drawing

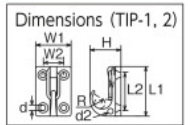
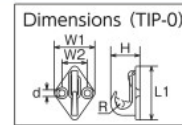


TIP-2



TIP-0

Features • The hook part is provided detachment stopper.  
Use • Set up on the wall as a hook or terminal metal fitting for a chain and rope.  
Materials • **Stainless Steel (SUS304)**  
Origin • China



Order Unit: 1 Piece

(Price revision date: Jan, 2017) TRUSCO NAKAYAMA CORPORATION

Order Code	Item No.	Price (per piece)	MSRP (per piece)	L1 (mm)	L2 (mm)	H (mm)	W1 (mm)	W2 (mm)	R (mm)	d (mm)	d2 (mm)	Handing load (N/kgf)	SPQ (piece)	Weight (g)
300-9114	TIP-0	¥ 713	¥ 770	42	-	23	32.0	20	2.5	5.2	-	98/10	20	28
300-9122	TIP-1	¥1,027	¥1,110	44	29	29	32.0	19	3.5	5.2	4.5	147/15	20	63
300-9131	TIP-2	¥1,259	¥1,360	53	35	35	38.5	23	4.0	6.2	4.5	196/20	20	102

Contact us:0120-509-849 <http://www.orange-book.com/>

MIZUMOTO MACHINE  
Stock 529 Items

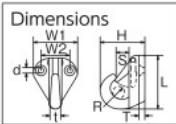
## "Wall Hook"



ComEco  
Chemical Content Inspection



B-147



Features • The hook part is provided detachment stopper.  
Use • Set up on the wall as a hook or terminal metal fitting for a chain and rope.  
Materials • **Stainless Steel (SUS304)**  
Origin • China

Order Unit: 1 Piece

MIZUMOTO MACHINE MFG.Co.Ltd

Order Code	Item No.	Price (per piece)	MSRP (per piece)	L (mm)	H (mm)	W1 (mm)	W2 (mm)	S (mm)	R (mm)	d (mm)	T (mm)	t (mm)	Handing load (N/kgf)	SPQ (piece)	Weight (g)
378-8555	B-146	¥1,494	¥1,760	38	25	34	22	7	2.5	4.2	3.2	5	147/15	20	40
378-8636	B-147	¥1,799	¥2,120	41	34	34	22	10	4.5	4.2	4.5	8	147/15	20	55

Contact us:079-246-2501 <http://www.mizumoto-mm.co.jp/>

SUGATSUNE  
Stock 766 Items

## "Latch Hook"

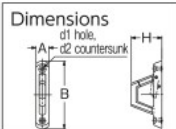


Com CAD



EN-K84

EN-K120



Features • It is a latch hook type hook that the opening/closing part is automatically closed with a spring and a hung item is hard to be removed. • Since its width is narrow, it is effective for narrow installation spaces.  
Use • A curtain hook, a lead hook for a small dog, etc.

Materials • **Stainless steel (SCS14)**  
Origin • Japan

Item No.	Accessories	Compatible rope diameter
EN-K84	Cross recess countersunk tapping screw M4 x 25	10mm or less
EN-K120	Cross recess countersunk tapping screw M5 x 30	20mm or less

Order Unit: 1 Piece

(Price revision date: May, 2015) SUGATSUNE KOGYO Co.Ltd.

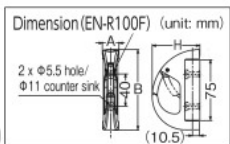
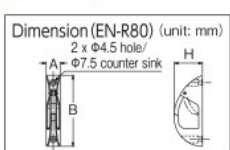
Order Code	Item No.	Price (per piece)	MSRP (per piece)	A (mm)	B (mm)	H (mm)	d1 (mm)	d2 (mm)	Handing load (N/kgf)	SPQ (piece)	Weight (g)
376-9828	EN-K84	¥3,564	¥3,300	16	84	38.0	4.5	8.5	196/20	10	92
376-9810	EN-K120	¥4,860	¥4,500	22	120	54.0	5.4	10.5	588/60	10	280

Contact us:03-3851-1122 <http://www.sugatsune.co.jp/>

SUGATSUNE  
Stock 766 Items

## "Latch Hook"

Com CAD



Features • It is a latch hook that the opening/closing part is closed with a spring by one touch once hanging an item and the item is hard to be removed.  
Use • For outdoor hook of ships, residences, factories, etc.

Materials • **Stainless steel (SCS14)**  
Origin • Japan

Item No.	Accessories	Compatible rope diameter	90° rotation to right and left
EN-R80	Cross recess pan tapping screw M4 x 25	10mm or less	None
EN-R100F	Cross recess bound tapping screw 5 x 30 (stainless steel)	16mm or less	Yes

Order Unit: 1 Piece

(Price revision date: May, 2015) SUGATSUNE KOGYO Co.Ltd.

Order Code	Item No.	Price (per piece)	MSRP (per piece)	A (mm)	B (mm)	H (mm)	Handing load (N/kgf)	SPQ (piece)	Weight (g)
376-9836	EN-R80	¥3,024	¥2,800	16	80	31.8	196/20	10	85
440-3703	EN-R100F	¥8,964	¥8,300	20	100	60.0	588/60	10	350

Contact us:03-3851-1122 <http://www.sugatsune.co.jp/>