

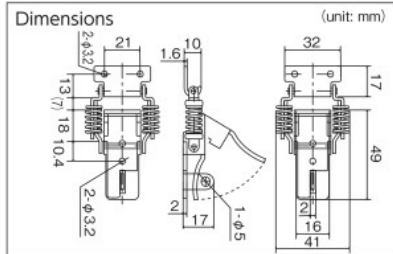
Prices displayed include 8% tax.

TRUSCO **Draw Latch (key hole-equipped spring type, steel)** **RoHS**



P-31H

- Specs**
- Body Mounting Hole/Receiving Hole Dimension: 3.2mm
 - Key Hole Diameter: 5mm
- Materials**
- Cold Rolled Steel Plate (SPCC)
 - Surface Treatment: Trivalent Uni-chrome-plated Finishing
- Origin**
- Japan

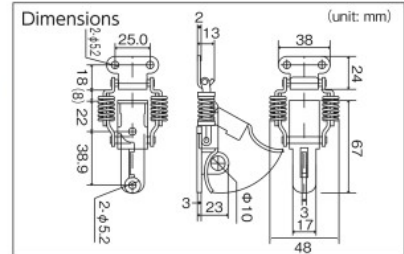


TRUSCO **Draw Latch (key hole-equipped spring type, steel)** **RoHS**



P-30H

- Specs**
- Main Body Mounting Hole/Receiving Hole Dimension: 5.2mm
 - Key Hole Diameter: 10mm
- Materials**
- Cold Rolled Steel Plate (SPCC)
 - Surface Treatment: Trivalent Uni-chrome-plated Finishing
- Origin**
- Japan



Order Unit: 1 Bag (Price revision date: Jan, 2016) TRUSCO NAKAYAMA CORPORATION

Order Code	Item No.	Price (per bag)	MSRP (per bag)	Q'ty Per Bag (piece)	SPQ (bag)	Weight (g/bag)
384-0018	P-31H	¥917	¥990	2	10	75

Contact us: 0120-509-849 <http://www.orange-book.com/>

Order Unit: 1 Bag (Price revision date: Jan, 2016) TRUSCO NAKAYAMA CORPORATION

Order Code	Item No.	Price (per bag)	MSRP (per bag)	Q'ty Per Bag (piece)	SPQ (bag)	Weight (g/bag)
778-7171	P-30H	¥1,259	¥1,360	2	10	192

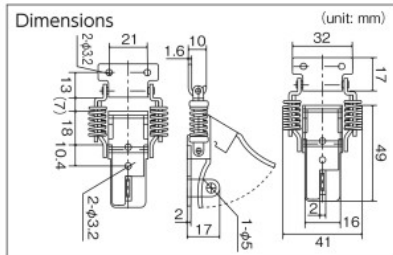
Contact us: 0120-509-849 <http://www.orange-book.com/>

TRUSCO **Draw Latch (key hole-equipped spring type, stainless steel)** **RoHS**



P-31HSUS

- Specs**
- Body Mounting Hole/Receiving Hole Dimension: 3.2mm
 - Key Hole Diameter: 5mm
- Materials**
- Stainless Steel (SUS304)
 - Surface Treatment: Bright Finishing
- Origin**
- Japan

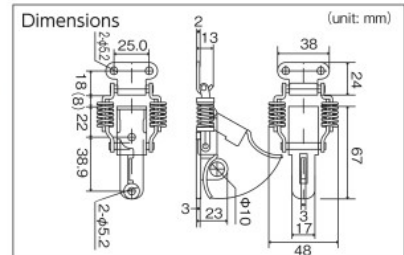


TRUSCO **Draw Latch (key hole-equipped spring type, stainless steel)** **RoHS**



P-30HSUS

- Specs**
- Main Body Mounting Hole/Receiving Hole Dimension: 5.2mm
 - Key Hole Diameter: 10mm
- Materials**
- Stainless Steel (SUS304)
- Origin**
- Japan



Order Unit: 1 Bag (Price revision date: Jan, 2016) TRUSCO NAKAYAMA CORPORATION

Order Code	Item No.	Price (per bag)	MSRP (per bag)	Q'ty Per Bag (piece)	SPQ (bag)	Weight (g/bag)
384-0026	P-31HSUS	¥1,962	¥2,120	2	10	81

Contact us: 0120-509-849 <http://www.orange-book.com/>

Order Unit: 1 Bag (Price revision date: Jan, 2016) TRUSCO NAKAYAMA CORPORATION

Order Code	Item No.	Price (per bag)	MSRP (per bag)	Q'ty Per Bag (piece)	SPQ (bag)	Weight (g/bag)
778-7189	P-30HSUS	¥2,999	¥3,240	2	10	188

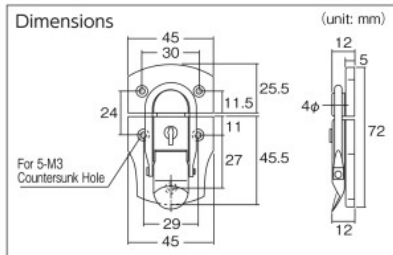
Contact us: 0120-509-849 <http://www.orange-book.com/>

TRUSCO **Draw Latch (key-equipped type, steel)** **RoHS** **Stock 38,650 Items**



L-12

- Specs**
- Main Body Mounting Hole/Receiving Hole Dimension: 3.8mm
- Materials**
- Cold Rolled Steel Plate (SPCC)
 - Surface Treatment: Trivalent Chrome-plated Finishing
- Accessories**
- With key
- Origin**
- Japan

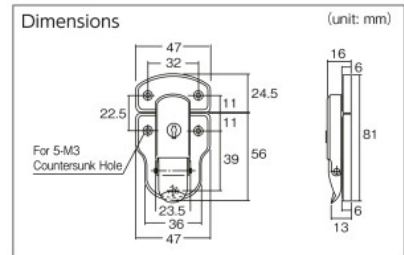


TRUSCO **Draw Latch (key-equipped type, steel)** **RoHS** **Stock 38,650 Items**



L-11

- Specs**
- Body Mounting Hole/Receiving Hole Dimension: 3.5mm
- Materials**
- Cold Rolled Steel Plate (SPCC)
 - Surface Treatment: Nickel-plated Finishing
- Accessories**
- With key
- Origin**
- Japan



Order Unit: 1 Bag (Price revision date: Jan, 2016) TRUSCO NAKAYAMA CORPORATION

Order Code	Item No.	Price (per bag)	MSRP (per bag)	Q'ty Per Bag (piece)	SPQ (bag)	Weight (g/bag)
232-9158	L-12	¥1,713	¥1,850	2	10	140

Contact us: 0120-509-849 <http://www.orange-book.com/>

Order Unit: 1 Bag (Price revision date: Jan, 2016) TRUSCO NAKAYAMA CORPORATION

Order Code	Item No.	Price (per bag)	MSRP (per bag)	Q'ty Per Bag (piece)	SPQ (bag)	Weight (g/bag)
232-9140	L-11	¥1,268	¥1,370	2	10	170

Contact us: 0120-509-849 <http://www.orange-book.com/>