

TD60 RoHS

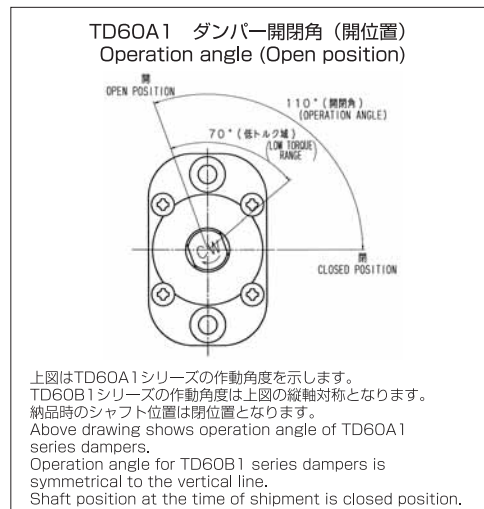
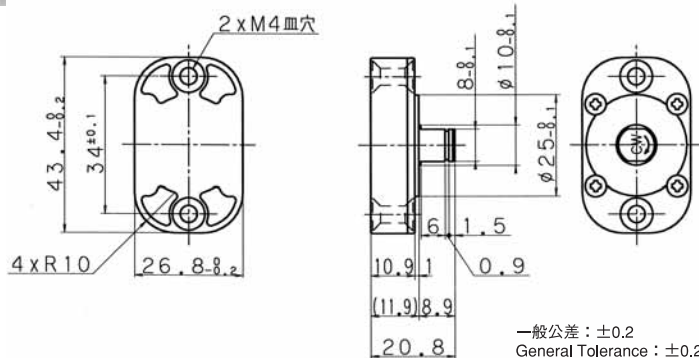


特長

- ・ 独自設計により本体幅10.9 [mm]、許容トルク1.96N・mを実現
- ・ 優れた応答性

FEATURE

- ・ The original design realized a body width of 10.9mm and torque of 1.96N・m.
- ・ TD60 DAMPERS have the device in which backlash is reduced and excel in the responsibility of damping effect.



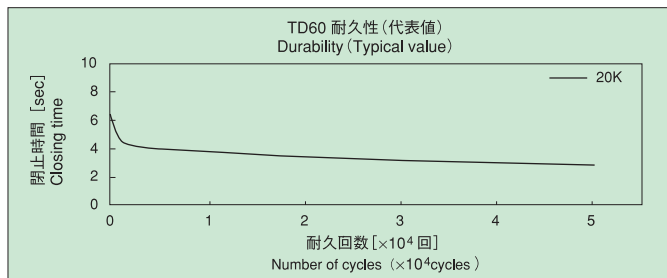
Code	Part No.	許容トルク Allowable Torque [N・m] (Kgf・cm)	方向 Direction
606005	TD60A1-10K	[0.98] (10)	CW (R)
606003	TD60A1-15K	[1.47] (15)	CW (R)
606001	TD60A1-20K	[1.96] (20)	CW (R)

Code	Part No.	許容トルク Allowable Torque [N・m] (Kgf・cm)	方向 Direction
606006	TD60B1-10K	[0.98] (10)	CCW (L)
606004	TD60B1-15K	[1.47] (15)	CCW (L)
606002	TD60B1-20K	[1.96] (20)	CCW (L)

耐久性 Durability

試験機シャフト上のウェイトによって負荷トルクをダンパーに与え、規定角度内での自然落下秒数（閉止時間）を測定。

After setting-up of maximum torque to each dampers with a weight on the shaft of test device, TOK BEARING measured each closing time.

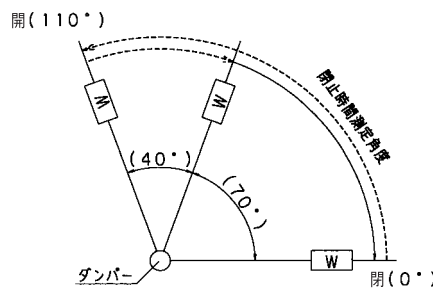
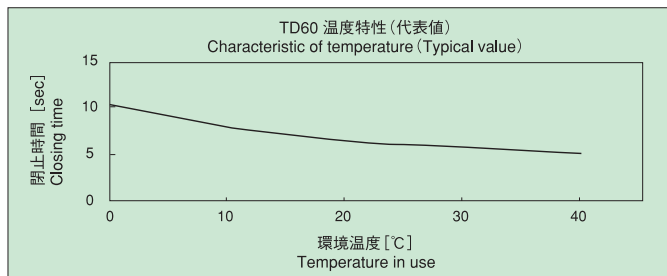


開閉角度 Operation angle	110°	
耐久回数 Durability	5万回 (50,000cycles)	
閉止時間 Closing time	負荷トルク Applied torque	初期値 Initial value
	0.98N・m (10kgf・cm)	5~15秒 (sec)
	1.47N・m (15kgf・cm)	5~15秒 (sec)
1.96N・m (20kgf・cm)	3~12秒 (sec)	

温度特性 Characteristic of temperature

各環境温度下に1時間以上放置後、当社測定器具にて規定角度内での自然落下秒数（閉止時間）を測定。

After leaving it in each room temperature for 1 hour or more, the closing time is measured in measuring angle by TOK-made device.



試験条件 Test condition

- | | |
|---------------------------|---|
| ①開閉時間：15秒/回（基準） | ①Setting-up time：15sec/cycle |
| ②負荷トルク：1.96N・m (20kgf・cm) | ②Applied torque：1.96N・m (20kgf・cm) |
| ③温度：23°C±2°C | ③Measuring temp：23°C±2°C |
| ④閉止時間測定角度：70°→0° | ④Measuring angle of closing time：70°→0° |
| ⑤ラジアル荷重：なし | ⑤Radial force：nothing |
| ⑥耐久後の閉止時間：1秒以上 | ⑥Closing time after durability test：1 sec or more |